



Wick Lane, London, E3

BUTLER & STAG



Guide Price £500,000 - £550,000
Forming part of this attractive waterside complex, comprising an eclectic mix of modern apartments, dynamic communal gardens that allow for intimate and diverse social areas to live, work and play is this immaculate 1109 Sq/ft two-bedroom, two-bathroom apartment.



Leasehold

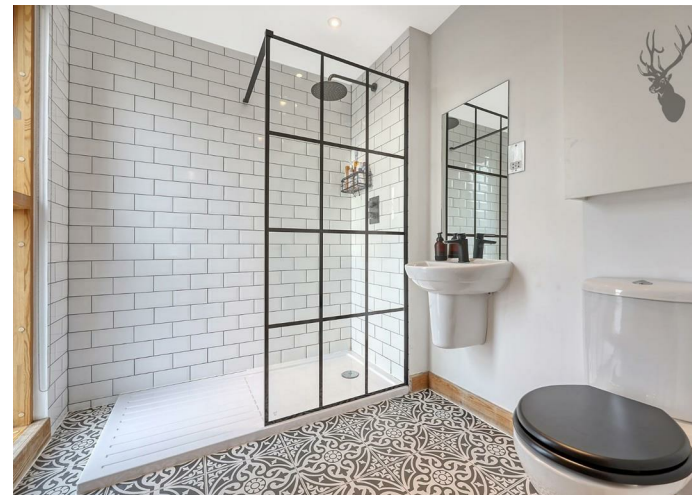
- First Floor Apartment
- Chain Free
- 1,109 Sq/Ft Internal Living Space
- Lift Access
- Two Bedrooms
- Waterside Complex
- Two Bathrooms
- Concierge Service
- Hackney Wick Station Close By

Upon entering this large, two bedroom apartment, you'll be greeted by a spacious, open-concept living area, flooded with natural light. Large floor-to-ceiling windows provide stunning vistas of the urban landscape that is East London.

At the heart of the apartment is a stunning fully equipped kitchen, complete with stainless steel appliances, ample cabinet space, granite work surfaces and a breakfast bar. Whether you're a gourmet chef or just enjoy the occasional meal at home, this kitchen has everything you need to whip up delicious dishes while taking in the serene views.

The apartment features two lavishly sized bedrooms (one with Ensuite) and floor to ceiling height windows. These bedrooms are your peaceful retreat after a long day, offering ample space to unwind. The apartment includes two modern bathrooms, featuring contemporary fixtures and a soothing colour palette. With plenty of storage, you'll have all the convenience you need to start and end your day on a refreshing note.

At Riverside Apartments, you'll have access to a range of community amenities, including a landscaped grounds/picnic areas, walking trails along the riverbank and canals. There's also a concierge service to cater to your needs, providing you with convenience and peace of mind. Wick Lane is on the fringes of Hackney Wick, which is now a thriving, cultural creative hub comprising independent cafes, bars and warehouse pop-up art galleries, this energetic neighbourhood will be a truly inspiring place to live. Ideal for both budding entrepreneurs and anyone looking to embrace the creative vibe of this hidden gem. The apartment is also located minutes from the beautiful Victoria Park, with Victoria Park Village's pubs and delis just a short walk away.





Ink Court

Approx. Gross Internal Area 103.1 Sq M (1109.6 Sq Ft)

BUTLER & STAG



Measurements are approximate and for illustration purposes only. While we do not doubt the accuracy and completeness, we advise you conduct a careful independent assessment of the property to determine monetary value.
© @modephoto.uk www.modephoto.co.uk

BUTLER & STAG

☎ 020 8102 1236

🏠 508 Roman Road, Bow, London, E3 5LU

✉ bow@butlerandstag.com

www.butlerandstag.uk

IMPORTANT NOTICE - These particulars have been prepared in good faith and they are not intended to constitute part of an offer or contract. We have not performed a structural survey on this property and the services, appliances and specific fittings have not been tested. All photographs, measurements, floor plans and distances referred to are given as a guide and should not be relied upon.