



Bolinder Way, London, E3

BUTLER & STAG



Bow River Village Canal Side Apartments: Where Tranquillity Meets Urban Living. Nestled along the picturesque banks of the Stanstead Mill Stream, Bow River Village Canal Side Apartments offer a unique blend of natural serenity and modern urban living. Located in a sought-after neighbourhood, this luxurious apartment community is the perfect choice for those seeking a tranquil oasis amidst the bustling cityscape.



Leasehold

- Waterside Development
- 579.1 Sq/Ft Internal Living Space
- Open-Concept Layout
- Private Full Width Balcony
- One Bedroom
- Fourth Floor Apartment
- Bromley By Bow Tube Station A Moments Walk Away
- Chain Free

Welcome to this contemporary 1-bedroom apartment. Upon entering, you're greeted by an inviting living space adorned with high ceilings that amplify the sense of space and light. Large windows frame scenic views of the landscaped gardens, infusing the room with natural sunlight and creating a welcoming ambiance.

The open plan kitchen is a chef's delight, elegantly designed with modern appliances, ample storage, and sleek countertops. It offers a perfect setting for culinary endeavors while enjoying the scenic backdrop outside. The bedroom exudes comfort and tranquillity, providing a cozy haven for relaxation. Thoughtfully designed with comfort in mind, it offers a peaceful retreat after a busy day.

A major highlight of this apartment is its proximity to the Stanstead Mill Steam Canal, offering residents the opportunity to explore nature trails, enjoy leisurely walks, or partake in recreational activities along the tranquil waterfront.

Brilliantly located just a few minutes walk away from Bromley-by-Bow tube station and within short walking distance from a gym, bus links, a large Tesco, green spaces, numerous pubs, restaurants and cafes.

Across the river there is an array of local amenities being built, which will include new bars and restaurants, schools and nursery's as well as other commercial units. This will be access for a footbridge and will add amazing value to the area.

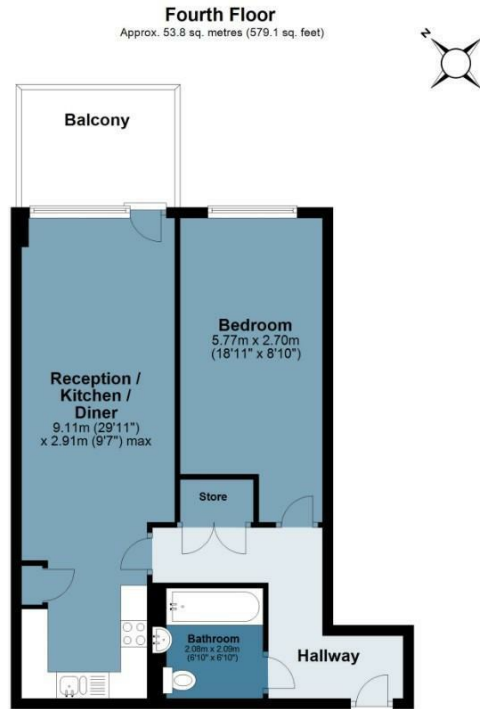




Gunnel Court

Approx. Gross Internal Area 53.8 Sq M (579.1 Sq Ft)

BUTLER & STAG



Measurements are approximate and for illustration purposes only. While we do not doubt the accuracy and completeness, we advise you conduct a careful independent assessment of the property to determine monetary value.
© @modephotouk www.modephoto.co.uk

IMPORTANT NOTICE - These particulars have been prepared in good faith and they are not intended to constitute part of an offer or contract. We have not performed a structural survey on this property and the services, appliances and specific fittings have not been tested. All photographs, measurements, floor plans and distances referred to are given as a guide and should not be relied upon.

BUTLER & STAG

☎ 020 8102 1236

🏠 508 Roman Road, Bow, London, E3 5LU

✉ bow@butlerandstag.com

www.butlerandstag.uk