



- Semi Detached Cottage
- Lounge with Log Burner
- Bathroom
- Council Tax Band C / EPC Rating E

- Newly Refurbished
- Breakfasting Kitchen
- Gardens and Yard

- Two Bedrooms
- Laundry
- Garage & Storage

This charming 2 Bedroom, single storey semi detached cottage is situated in the small hamlet of Meldon, surrounded by open countryside. Recently updated with a New Kitchen, New Bathroom, New Carpets and Decorated throughout. The Entrance Porch has door to garden and door to the Entrance Hall. The Breakfasting Kitchen is fitted with a range of units, sink and space and power for cooker/white goods. The focal point of the Lounge is a wood burning stove. The Laundry room has plumbing for a washing machine. Bedroom one is a spacious double and Bedroom 2, a single or study. The Family Bathroom is fitted with a bath with shower over, WC and wash basin.

Externally, there are two separate gardens both with lawns, a range of plants and shrubs and paved patio. A gated yard area with storage. There is vehicle parking to the side of the property and also at the bottom of the garden including a small garage. Meldon is situated close to the village of Whalton Bolam Lake and the village of Belsay, with its excellent primary school and Village Shop. Meldon is well placed for commuting to Ponteland, Newcastle International Airport and the City Of Newcastle together with The Town of Morpeth and the A1.

Entrance Porch 4'11" x 5'0" (1.522 x 1.533)

Lounge 14'10" x 16'9" (4.531 x 5.115)

Kitchen 11'11" x 11'10" (3.655 x 3.631)

Bedroom 1 16'9" x 11'11" (5.110 x 3.635)

Bedroom 2 11'11" x 5'5" (3.647 x 1.665)

Bathroom 4'8" x 11'10" (1.435 x 3.614)

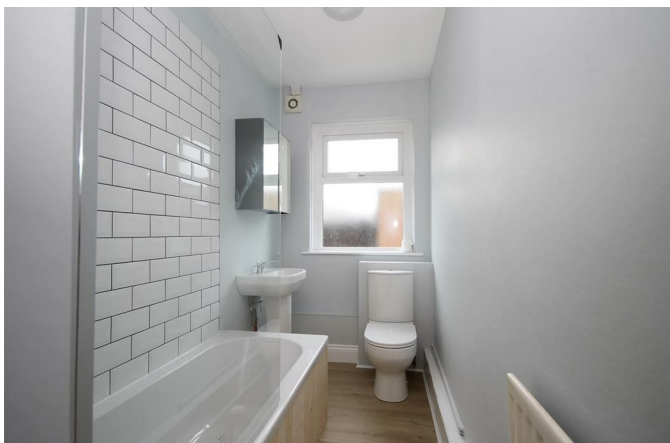
Laundry 3'11" x 6'11" (1.196 x 2.117)



**2023
WINNER**

ESTAS
★★★★★

Verified reviews from homemovers



Energy Performance: Current Potential

Council Tax Band:

Distance from School:

Distance from Metro:

Distance from Village Centre:



These particulars do not constitute or form part of an offer nor may they be regarded as representative. All interested parties must themselves verify their accuracy. It is not company policy for any gas, oil or electrical appliances to be tested and purchasers must satisfy themselves as to their working order. Measurements are approximate, floor plans are not to scale and are for illustration purposes only.