



2



1



1

- Spacious 1st Floor Apartment
- Close to Shops
- Central Location
- Two Double Bedrooms
- Open Plan Kitchen/ Dining & Living Room
- New Carpets and Decoration
- Utility Room
- Modern Bathroom
- Fees Apply

TENANTS ADMIN FEE ONLY £234 INC VAT! A beautifully presented two bedroom 1st Floor apartment occupying a conveniently central position in Haltwhistle. The accommodation has undergone recent improvements and offers spacious rooms to include: open plan Kitchen/Living Room with windows to three sides, two Double Bedrooms and a Bathroom. A shared rear entrance has stairs leading to a self contained first floor apartment. The location is ideally placed and within walking distance of local amenities and transport links. Viewings are highly recommended.

Entrance Hall

Open Plan Kitchen/Living Room 20'09 x 14 (6.32m x 4.27m)

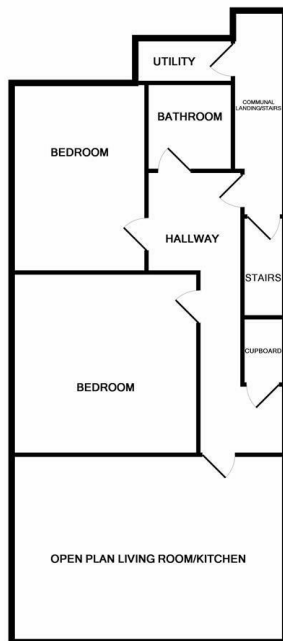
Bedroom 1 14' x 13'08 (4.27m x 4.17m)

Bedroom 2 14'2 x 10'1 (4.32m x 3.07m)

Bathroom W/C 6'06 x 6'04 (1.98m x 1.93m)

Utility Room

Information For Tenants - Fees



TOTAL APPROX. FLOOR AREA 932 SQ.FT. (86.5 SQ.M.)
Whilst every attempt has been made to ensure the accuracy of the floor plan contained here, measurements of doors, windows, rooms and any other items are approximate and no responsibility is taken for any error, omission, or mis-statement. This plan is for illustrative purposes only and should be used as such by any prospective purchaser. The services, systems and appliances shown have not been tested and no guarantee as to their operability or efficiency can be given.
Made with Metropix ©2018

Energy Performance: Current C Potential C

Council Tax Band:

Distance from School:

Distance from Metro:

Distance from Village Centre:

These particulars do not constitute or form part of an offer nor may they be regarded as representative. All interested parties must themselves verify their accuracy. It is not company policy for any gas, oil or electrical appliances to be tested and purchasers must satisfy themselves as to their working order. Measurements are approximate, floor plans are not to scale and are for illustration purposes only.