



6



6



2

- 6 Bedrooms
- Living Room
- Utility Room & Cloaks WC
- Council Tax Band B / EPC Rating C

- 4 en-suites & 3 Dressing Rooms
- Kitchen/Dining Room
- Garage with Gym/Playroom

- 2 Bathrooms
- Family Room/Study
- Summer House



A stunning 6 bedroom, stone built detached house situated in Medburn close to Darras Hall and the village of Ponteland. This impressive family home is set over three floors and offers generous, well proportioned, accommodation incorporated high quality fixtures and fittings together with the benefit of solar panels and air source heat pumps.

A welcoming reception hall with cloakroom WC and stairs to upper floors and incorporating a wine store. To the front is a Family Room/Study and to the rear a wonderful large Living room with feature media wall and opens to the magnificent kitchen/Dining room fitted with a superb range of units and appliances. There is also a utility room and above the garage a gym/playroom. To the first floor is the landing with unique glass floor walkway There are four double bedrooms, one currently used as a home office, 3 with dressing rooms, 3 en suites and a luxury family bathroom.

Two further bedroom suites, both with balconies one with en suite shower room and from the landing a bathroom.

Externally, to the front is a very spacious driveway with electric sliding gate and garage with electric access door. The landscaped rear garden has a generous lawn, raised terrace, planted borders, a summerhouse with bar and log burner and storage shed.



*\*Please see Floor Plan on Page 4 for room sizes.*







Energy Performance: Current C Potential C

Council Tax Band: B

Distance from School:

Distance from Metro:

Distance from Village Centre:

*Please note all sizes and distances are approximate.*

**2024  
WINNERS**

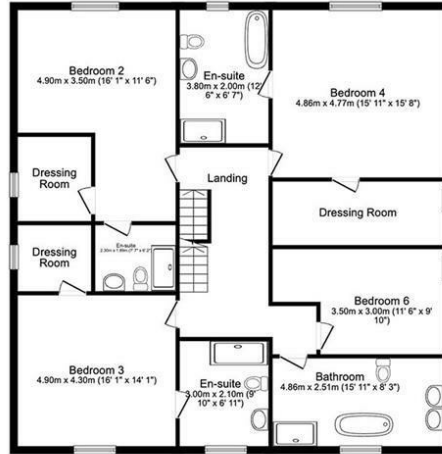
**ESTAS**

*Verified reviews from our clients*

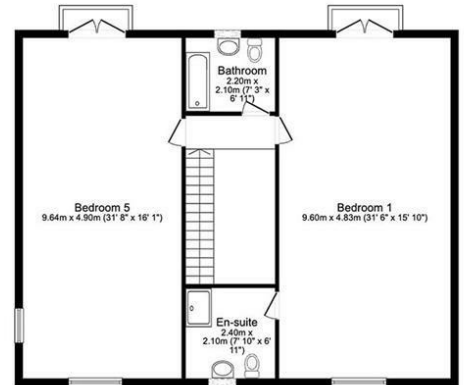
Ground Floor  
Floor area 153.2 sq.m. (1,649 sq.ft.)



First Floor  
Floor area 150.0 sq.m. (1,615 sq.ft.)

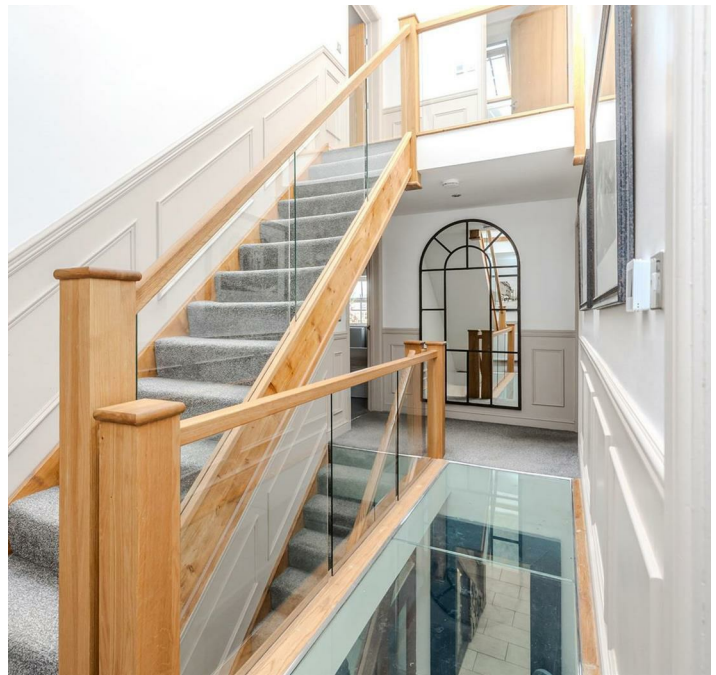


Second Floor  
Floor area 116.6 sq.m. (1,256 sq.ft.)



Total floor area: 471.8 sq.m. (5,078 sq.ft.)

This floor plan is for illustrative purposes only. It is not drawn to scale. Any measurements, floor areas (including any total floor area), openings and orientations are approximate. No details are guaranteed, they cannot be relied upon for any purpose and do not form any part of any agreement. No liability is taken for any error, omission or misstatement. A party must rely upon its own inspection(s).



These particulars do not constitute or form part of an offer nor may they be regarded as representative. All interested parties must themselves verify their accuracy. It is not company policy for any gas, oil or electrical appliances to be tested and purchasers must satisfy themselves as to their working order. Measurements are approximate, floor plans are not to scale and are for illustration purposes only.