



- Retirement Apartment
- Residents Lounge and Gardens
- 2 Bedrooms
- Council Tax Band C / EPC B

- Lift Access
- Parking
- Lounge / Dining

- Emergency Call System
- Well Presented
- Kitchen and Shower Room

A well presented two bedroom first floor apartment, ideally located within the village of Ponteland. This retirement apartment features lift access, emergency alarm pull cords, communal garden with summerhouse and residents lounge.

The accommodation comprises reception hall with two built-in storage cupboards, open plan living & dining room with electric fire and decorative surround and window overlooking the gardens. The kitchen is fitted with base, wall and drawer units with sink unit set in to laminate work tops. Built in electric oven, hob and extractor over and space for fridge and plumbing for washing machine. Both bedrooms have windows overlooking the gardens with Bedroom 1 benefiting from mirrored sliding door wardrobes. The modern shower room features corner shower cubicle with electric shower, low level WC and wash hand basin with cupboard storage under and mirror front wall cabinet.

Meadowfield Park is well placed for shopping facilities, variety of pubs and restaurants and sports and leisure facilities. Ponteland is ideally located for Newcastle International Airport and is within excellent commuting distance of Newcastle upon Tyne.



**2023
WINNER**

ESTAS
★★★★★

Verified reviews from homemovers



Energy Performance: Current B Potential B

Council Tax Band: C

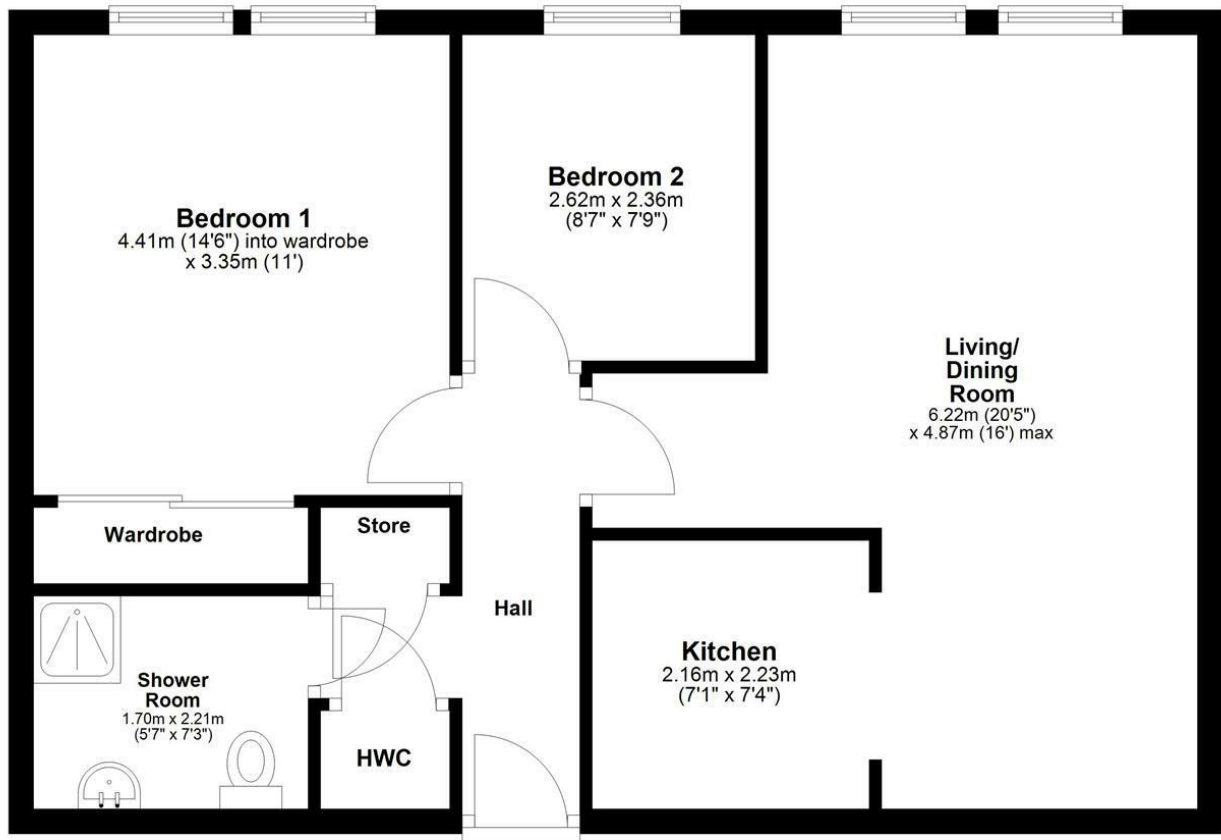
Distance from School:

Distance from Metro:

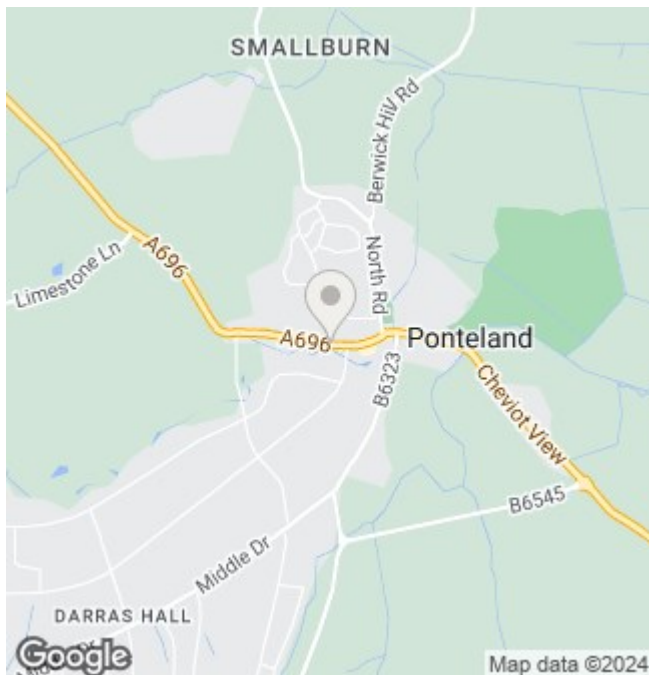
Distance from Village Centre:

First Floor

Approx. 58.3 sq. metres (627.1 sq. feet)



Total area: approx. 58.3 sq. metres (627.1 sq. feet)



These particulars do not constitute or form part of an offer nor may they be regarded as representative. All interested parties must themselves verify their accuracy. It is not company policy for any gas, oil or electrical appliances to be tested and purchasers must satisfy themselves as to their working order. Measurements are approximate, floor plans are not to scale and are for illustration purposes only.