



19 Hobson Way

Rotherham, S65 3SY

Offers In The Region Of

££££££££



3



2



1



B



# 19 Hobson Way



## Description

ELR are delighted to present this beautifully appointed three-bedroom detached home, ideally positioned on an attractive corner plot within a popular development close to local amenities. Offering modern, move-in-ready accommodation throughout, this property is sure to appeal to families and professionals alike. Early viewing is highly recommended.

- Detached family home in a desirable location
- Modern kitchen diner
- Enclosed rear garden with patio area
- Freehold / Tax Band C
- Three bedrooms, including master with en-suite
- Convenient downstairs WC
- Detached single garage
- Early viewing is highly recommended

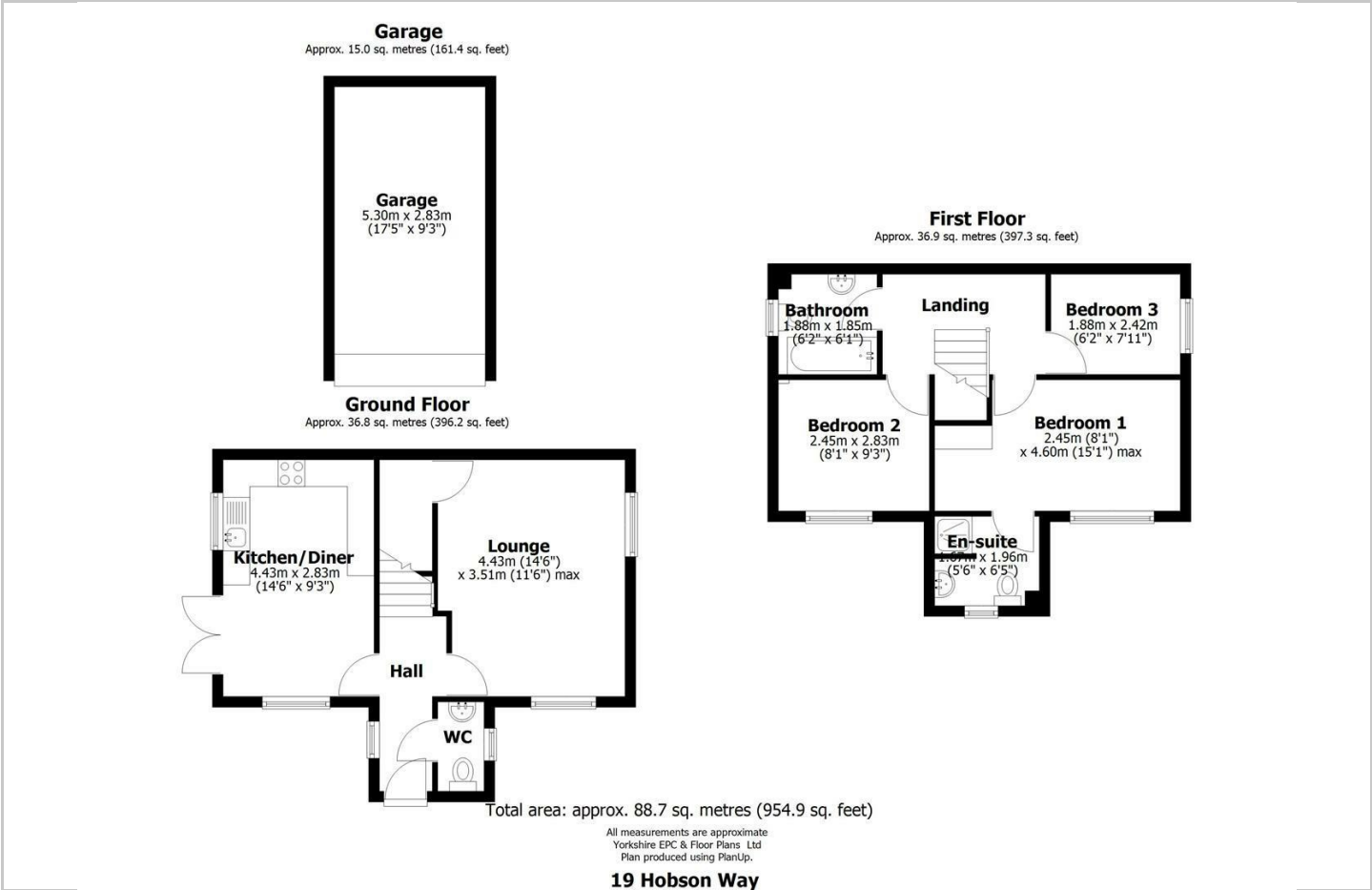




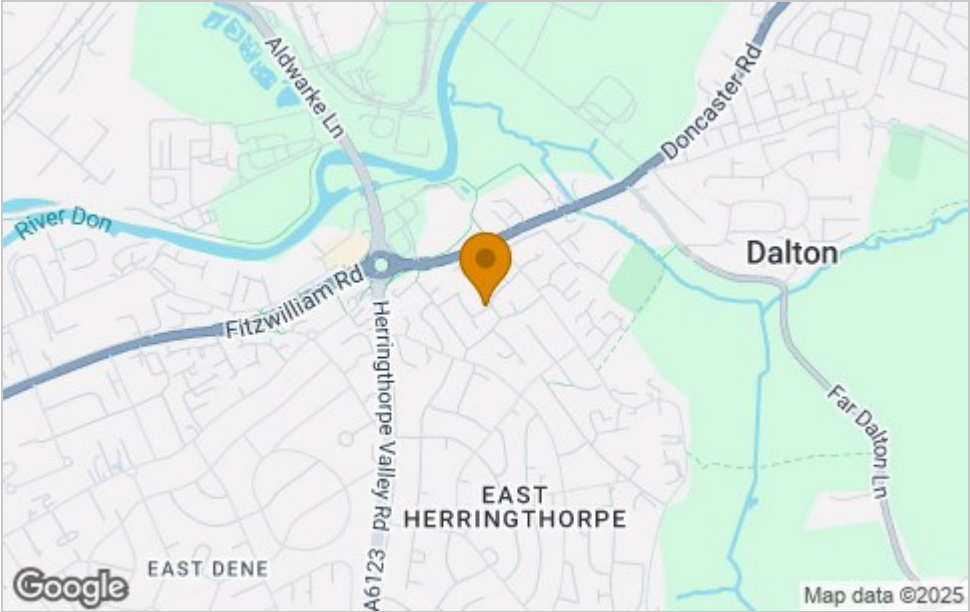




Floor Plan



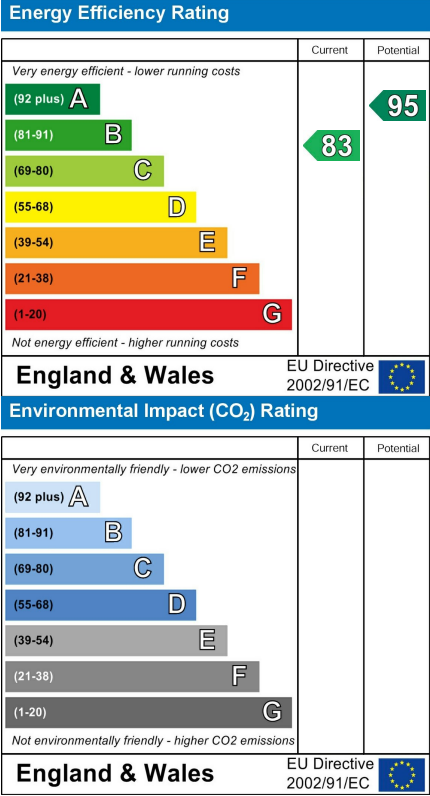
Area Map



Viewing

Please contact our ELR Wickersley Office on 01709 917676 if you wish to arrange a viewing appointment for this property or require further information.

Energy Efficiency Graph



These particulars, whilst believed to be accurate are set out as a general outline only for guidance and do not constitute any part of an offer or contract. Intending purchasers should not rely on them as statements of representation of fact, but must satisfy themselves by inspection or otherwise as to their accuracy. No person in this firms employment has the authority to make or give any representation or warranty in respect of the property.