



92 Quarry Hill

, Horbury, WF4 5NF

Offers In The Region Of

££££ £££



4



2



2



E



# 92 Quarry Hill



## Description

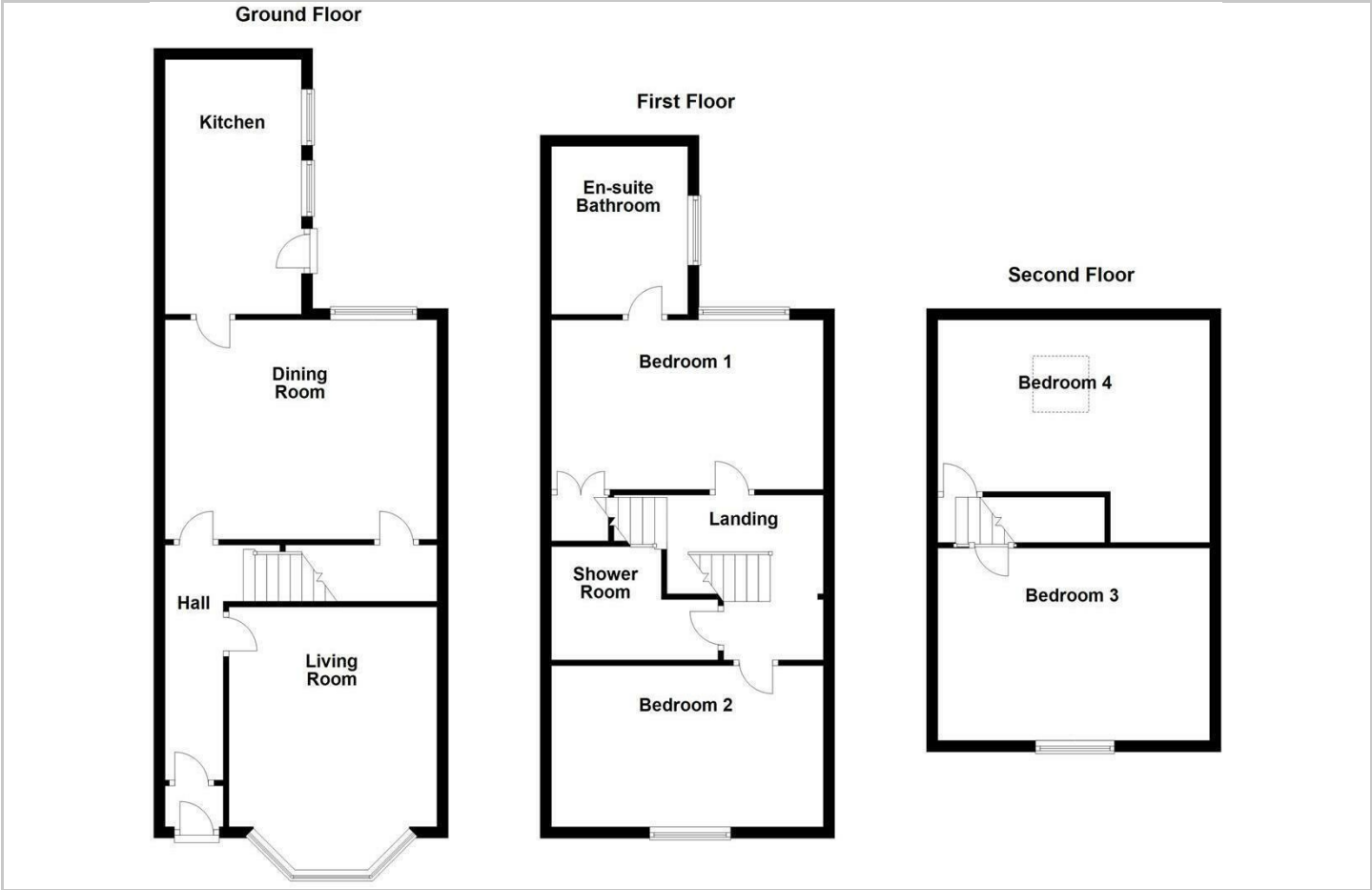
This charming and spacious three-storey home is perfect for families or those needing flexible living. It features a bright living room with bay window, a traditional dining room with fireplace, and a modern kitchen with garden access. The first floor includes two generously sized bedrooms, one with an en suite, and a stylish shower room. On the top floor, two versatile rooms can serve as bedrooms, offices, or hobby spaces. Outside, there's a low-maintenance front yard, a private rear garden, and a brick outhouse with toilet. Situated in central Horbury, it offers great local amenities, schools, and convenient transport links.

- Three-storey layout with flexible and spacious living areas.
- Modern, well-equipped kitchen with access to a rear garden.
- Enclosed garden, brick-built outhouse, and private off-road parking.
- Bright living room and traditional dining room with original fireplace.
- Four bedrooms in total, including a main with en suite bathroom.
- Prime Horbury location with nearby schools, shops, and transport links.

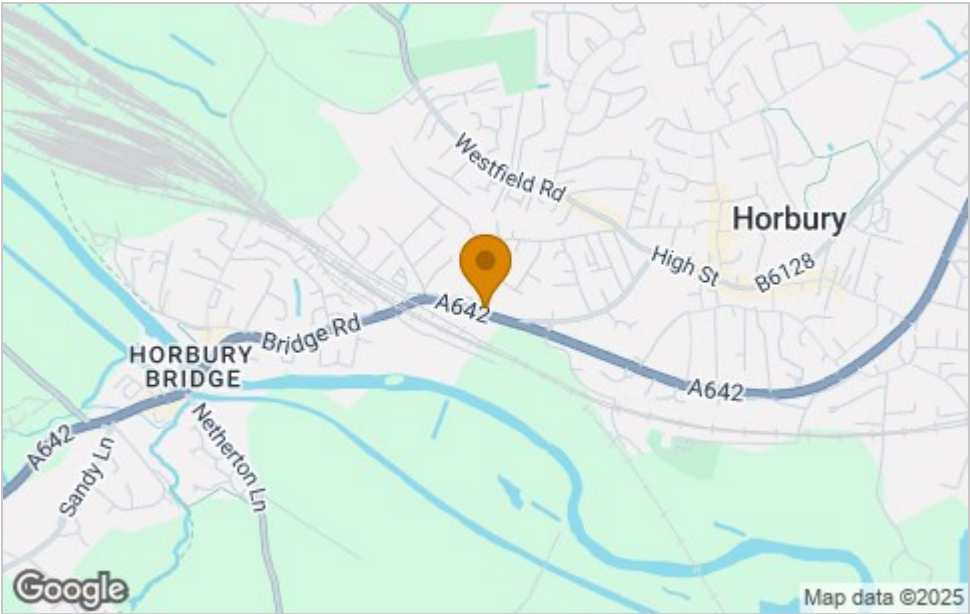




Floor Plan



Area Map



Viewing

Please contact our ELR Wickersley Office on 01709 917676 if you wish to arrange a viewing appointment for this property or require further information.

These particulars, whilst believed to be accurate are set out as a general outline only for guidance and do not constitute any part of an offer or contract. Intending purchasers should not rely on them as statements of representation of fact, but must satisfy themselves by inspection or otherwise as to their accuracy. No person in this firms employment has the authority to make or give any representation or warranty in respect of the property.

Energy Efficiency Graph

