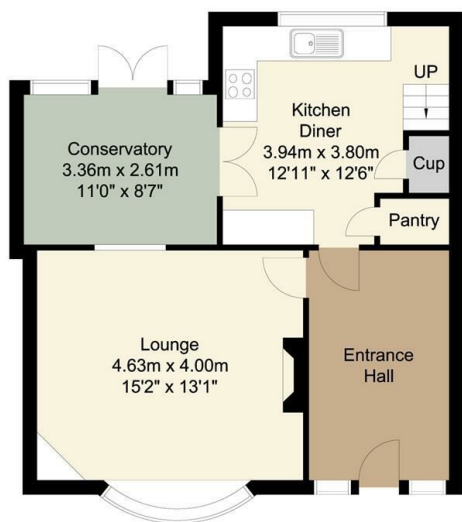
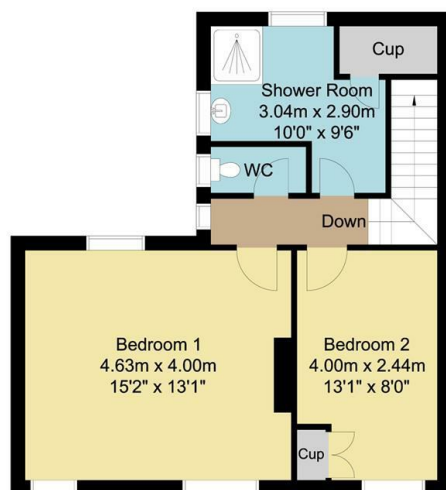


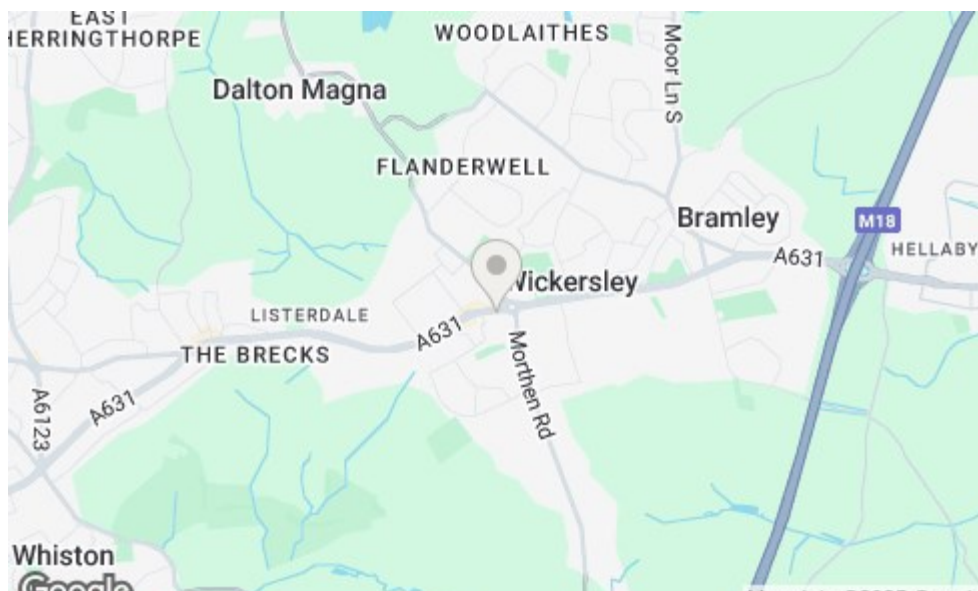
Ground Floor
54 sq m/581.25 sq ft
Approx.



First Floor
44 sq m/473.61 sq ft
Approx.



Whilst every attempt has been made to ensure the accuracy of the floor plan contained here, no responsibility is taken for incorrect measurements of doors, windows, appliances and rooms or any error, omission or misstatement. Exterior and interior walls are drawn to scale based on interior measurements. Any figure given is for initial guidance only and should not be relied on as a basis of valuation. The plans are for marketing purposes only and should only be used as such. No guarantee is given on the accuracy of the total square footage/meterage if quoted on this plan. CP Property Services @2025



Bakewell
3 Royal Oak Place
Matlock Street
Bakewell DE45 1HD
T: 01629 700699
E: bakewell@elr.co.uk

Banner Cross
888 Ecclesall Road
Banner Cross
Sheffield S11 8TP
T: 01142 683388
E: bannercross@elr.co.uk

Dore
33 Townhead Road
Sheffield
S17 3GD
T: 0114 2362420
E: dore@elr.co.uk

Hathersage
Main Road, Hathersage
Hope Valley
Derbyshire S32 1BB
T: 01433 651888
E: peakdistrict@elr.co.uk

Rotherham
149 Bawtry Road
Wickersley
Rotherham S66 2BW
T: 01709 917676
E: wickersley@elr.co.uk

**EADON
LOCKWOOD
& RIDDLE**
ESTD 1840



258, Bawtry Road, Rotherham, S66 1JY

Offers In The Region Of £180,000

258 Bawtry Road, Wickersley,
Rotherham, S66 1JY

Description
Discover the perfect blend of charm, character, and convenience with this beautifully presented end cottage, enhanced by a stunning double-story rear extension. Situated in the heart of Wickersley, this delightful home is offered with no onward chain, making it an attractive choice for a wide range of buyers.
Stepping inside, you are welcomed into a spacious room, currently used as a dining room, which could also serve as a delightful second lounge. This versatile space seamlessly flows into a cozy yet well-proportioned living room, ideal for both everyday relaxation and entertaining guests. The heart of the home is undoubtedly the well-appointed breakfast kitchen, designed for modern living with ample storage and workspace. Beyond the kitchen, a charming sunroom is bathed in natural light, creating a serene setting for enjoying your morning coffee, family meals, or simply unwinding while overlooking the garden.
Ascending to the first floor, you will find two generously sized double bedrooms, each offering a peaceful retreat with plenty of space for storage and furnishings. The large, well-designed family bathroom ensures comfort and practicality, complete with a separate WC. This deceptively spacious home is perfect for families, couples, or downsizers seeking comfort without compromise.
Outside, the property boasts a quaint, easy-to-maintain courtyard garden at the front, enhancing its charming curb appeal. To the rear, a private and enclosed garden provides a tranquil outdoor haven—perfect for alfresco dining, entertaining, or simply soaking up the fresh air in your own secluded retreat. A garden shed provides ample external storage.
With its unbeatable location, this home is just a stone's throw from Wickersley's vibrant selection of boutique shops, cafés, restaurants, and highly regarded schools. Excellent transport links ensure effortless connections to Rotherham, Sheffield, and beyond, making daily commutes and weekend excursions a breeze.
Viewing is essential to truly appreciate the space, warmth, and charm this home offers. Don't miss out on this wonderful opportunity—schedule your viewing today and take the first step toward making this charming cottage your new home!

- Beautifully presented end cottage with a double-story rear extension
- Spacious and versatile living areas, including a sunroom and well-appointed kitchen
- Two generously sized double bedrooms and a large family bathroom with a separate WC
- Private and enclosed rear garden, plus a charming front courtyard
- Prime location near boutique shops, cafés, restaurants, and top-rated schools
- No onward chain, with excellent transport links to Rotherham, Sheffield, and beyond

