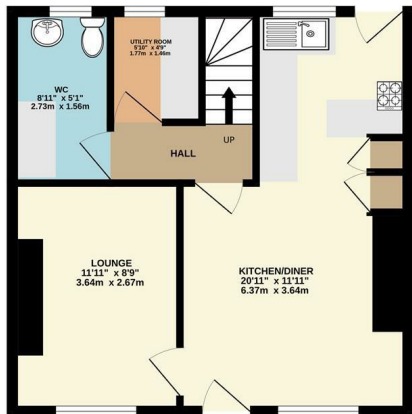
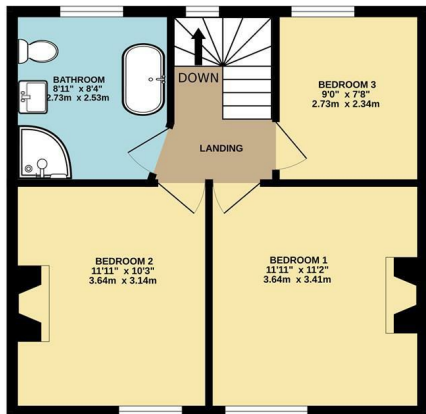


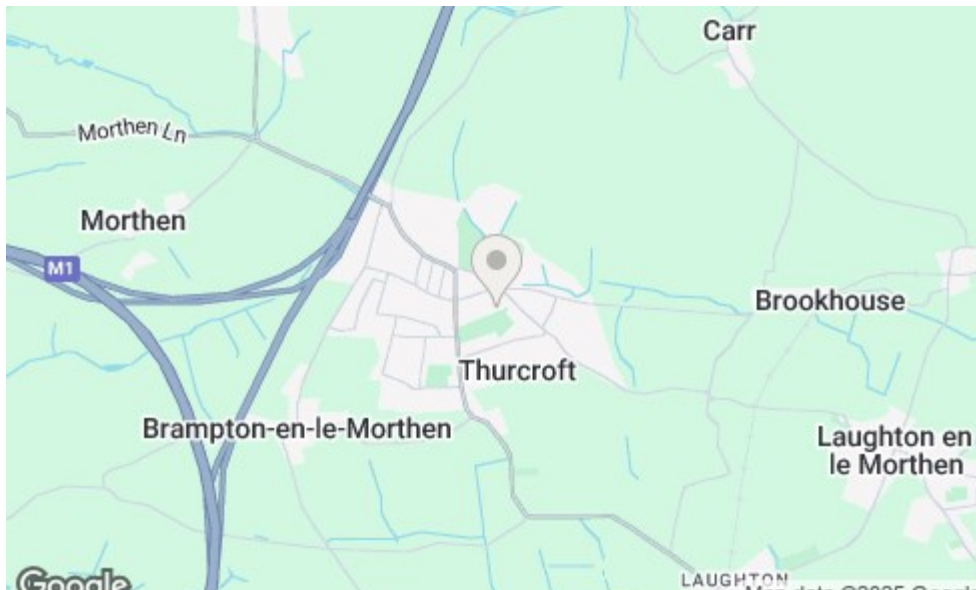
GROUND FLOOR
415 sq.ft. (38.5 sq.m.) approx.



1ST FLOOR
436 sq.ft. (40.5 sq.m.) approx.



TOTAL FLOOR AREA: 851 sq.ft. (79.0 sq.m.) approx.
Whilst every attempt has been made to ensure the accuracy of the floorplan contained here, measurements of doors, windows, rooms and any other items are approximate and no responsibility is taken for any error, omission or mis-statement. This plan is for illustrative purposes only and should be used as such by any prospective purchaser. The services, systems and appliances shown have not been tested and no guarantee as to their operability or efficiency can be given.
Made with Metropix ©2025



Bakewell
3 Royal Oak Place
Matlock Street
Bakewell DE45 1HD
T: 01629 700699
E: bakewell@elr.co.uk

Banner Cross
888 Ecclesall Road
Banner Cross
Sheffield S11 8TP
T: 01142 683388
E: bannercross@elr.co.uk

Dore
33 Townhead Road
Sheffield
S17 3GD
T: 0114 2362420
E: dore@elr.co.uk

Hathersage
Main Road, Hathersage
Hope Valley
Derbyshire S32 1BB
T: 01433 651888
E: peakdistrict@elr.co.uk

Rotherham
149 Bawtry Road
Wickersley
Rotherham S66 2BW
T: 01709 917676
E: wickersley@elr.co.uk

**EADON
LOCKWOOD
& RIDDLE**
ESTD 1840



34, West Street, Rotherham, S66 9LJ

Offers In The Region Of £140,000

34 West Street, Thurcroft, Rotherham,
S66 9LJ

Description
Located in the heart of Thurcroft, this beautifully presented and spacious three-bedroom mid-terrace home offers a perfect blend of style, space, and convenience. With easy access to local amenities, reputable schools and good transport links, this property is ideal for families, professionals and first-time buyers alike.

Step inside and discover a warm and inviting lounge, perfect to relax and unwind. The modern kitchen diner is a real showstopper, boasting an abundance of sleek storage units, integrated appliances, and ample space for family meals or entertaining guests. A convenient downstairs WC and a separate utility room enhance the practicality of this fantastic home.

Upstairs, you'll find three generously sized bedrooms, each offering comfort and versatility. The impressive four-piece family bathroom is designed for relaxation, featuring a bathtub, a separate shower, a stylish washbasin, and a WC.

The outdoor space is just as appealing. The front garden is beautifully maintained, complemented by a block-paved driveway providing off-road parking. To the rear, the enclosed patio yard offers a private outdoor retreat. Two large sheds provide additional storage or potential workshop space.

This outstanding home is ready to move into and won't be on the market for long. Don't miss out, call today to arrange your viewing and take the first step toward making this stunning property your own!

- Spacious three bedroom mid-terrace
- Perfect for first time buyers
- Modern kitchen diner with integrated appliances
- Downstairs WC
- Fabulous four piece bathroom suite
- Great location, close to local amenities
- Off road parking
- Freehold / Tax Band A
- Highly recommend an early viewing

