

9 Gillott Lane

Wickersley, Rotherham, S66 1EH

Guide Price £280,000



# 9 Gillott Lane



## Description

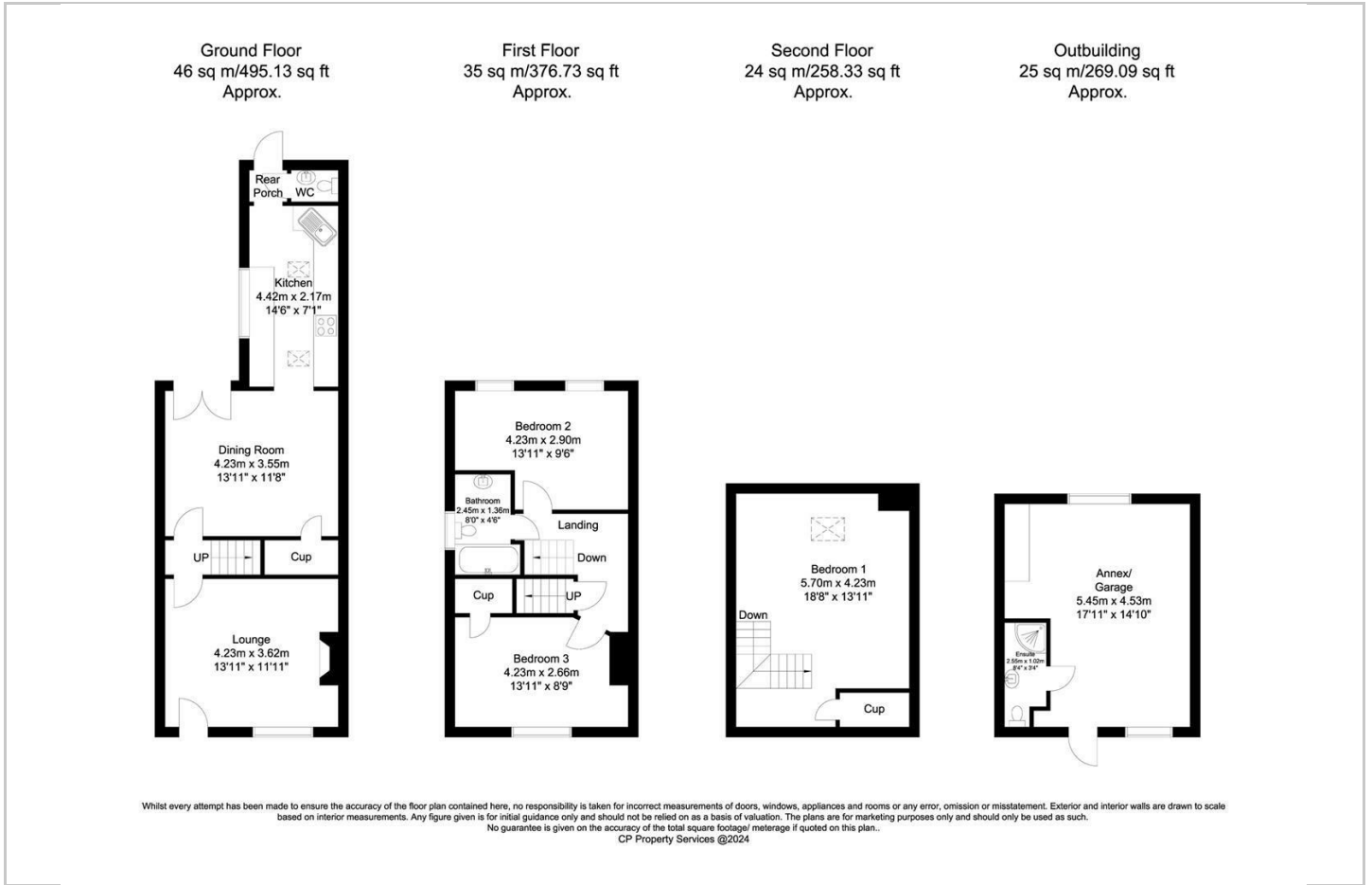
This beautifully extended three-bedroom, two-bathroom semi-detached home spans three floors and offers flexible living space, including a spacious garage/annexe with potential for multi-generational living. Featuring gas central heating, double glazing, two reception rooms, and a south-facing garden, it's ideal for family gatherings or relaxation. Conveniently located near village amenities, top schools, and major transport links, this home offers a perfect blend of rural charm and modern convenience. A must-see for first-time buyers or growing families!

- Three Bedroom, Two Reception Room Semi Detached
- South Facing Garden
- Desirable Location, Close to Numerous Amenities
- Stunning Throughout
- Large garden room/Annexe





## Floor Plan



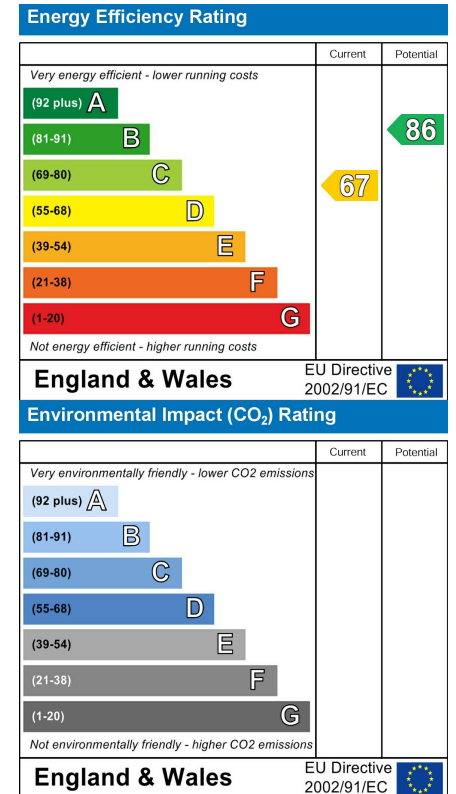
## Area Map



## Viewing

Please contact our ELR Wickersley Office on 01709 917676 if you wish to arrange a viewing appointment for this property or require further information.

## Energy Efficiency Graph



These particulars, whilst believed to be accurate are set out as a general outline only for guidance and do not constitute any part of an offer or contract. Intending purchasers should not rely on them as statements of representation of fact, but must satisfy themselves by inspection or otherwise as to their accuracy. No person in this firm's employment has the authority to make or give any representation or warranty in respect of the property.