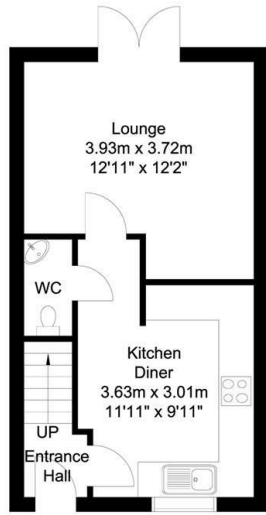
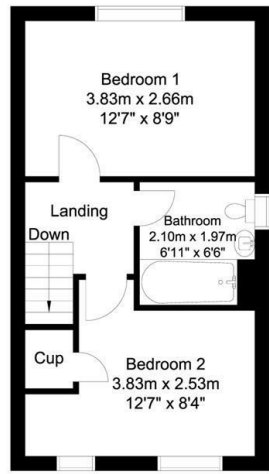


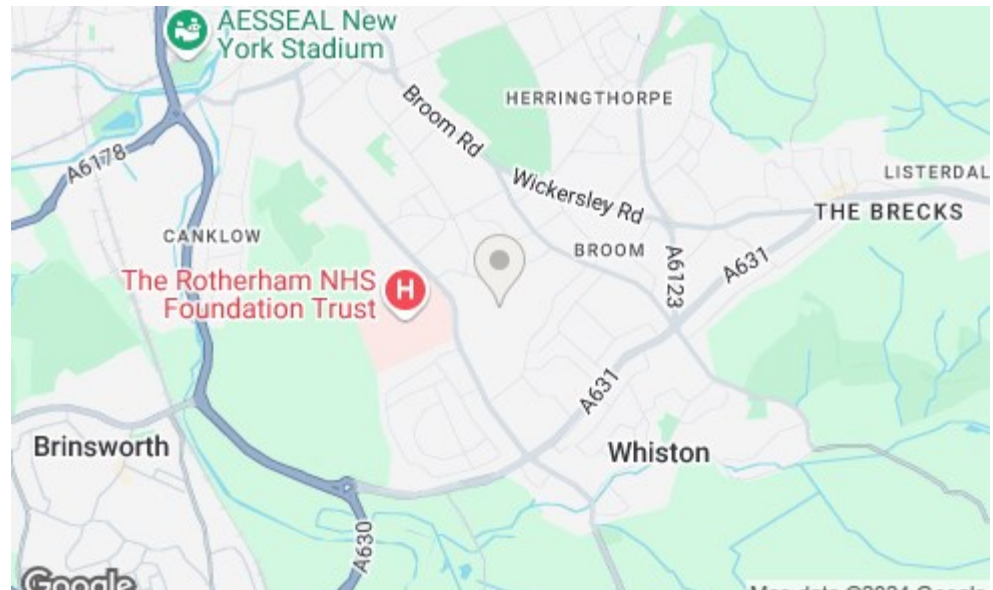
Ground Floor
29 sq m/312.15 sq ft
Approx.



First Floor
29 sq m/312.15 sq ft
Approx.



Whilst every attempt has been made to ensure the accuracy of the floor plan contained here, no responsibility is taken for incorrect measurements of doors, windows, appliances and rooms or any error, omission or misstatement. Exterior and interior walls are drawn to scale based on interior measurements. Any figure given is for initial guidance only and should not be relied on as a basis of valuation. The plans are for marketing purposes only and should only be used as such. No guarantee is given on the accuracy of the total square footage/ meterage if quoted on this plan. CP Property Services @2024



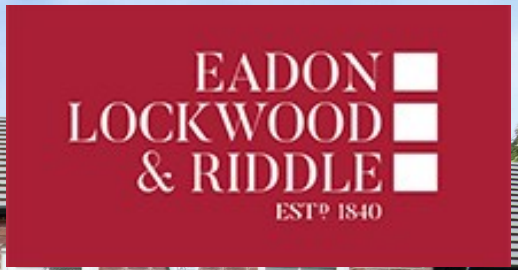
Bakewell
3 Royal Oak Place
Matlock Street
Bakewell DE45 1HD
T: 01629 700699
E: bakewell@elr.co.uk

Banner Cross
888 Ecclesall Road
Banner Cross
Sheffield S11 8TP
T: 01142 683388
E: bannercross@elr.co.uk

Dore
33 Townhead Road
Sheffield
S17 3GD
T: 0114 2362420
E: dore@elr.co.uk

Hathersage
Main Road, Hathersage
Hope Valley
Derbyshire S32 1BB
T: 01433 651888
E: peakdistrict@elr.co.uk

Rotherham
149 Bawtry Road
Wickersley
Rotherham S66 2BW
T: 01709 917676
E: wickersley@elr.co.uk



7, Micklethwait Court, Rotherham, S60 3FH

Offers In The Region Of £210,000

7 Micklethwait Court, Moorgate,
Rotherham, S60 3FH

Description

Nestled in this historic area of Moorgate. This charming two double bedroom end town house boasts a well-presented interior, complete with a private rear garden and off-road parking, perfect for those seeking convenience and comfort.

Situated ideally for easy access to Rotherham, Sheffield, and the nearby Rotherham Hospital, this home offers not just a place to live, but a lifestyle of convenience and connectivity. Whether you're a first-time buyer or looking for a cozy abode to call your own, this property is sure to impress.

With its wonderful location steeped in heritage, every corner of Micklethwait Court exudes a sense of history and charm. Don't miss the opportunity to view this delightful property in person to truly appreciate the accommodation it has to offer. This could be the perfect place for you to start your next chapter.

- Two Double Bedroom End Town House
- Beautiful Property finished to a High Standard
- Private Rear Garden
- Perfect for access to Sheffield, Rotherham and the Hospital
- Desirable Moorgate Location
- Rich Heritage and Historical Background to the Area
- Freehold / Tax Band B

