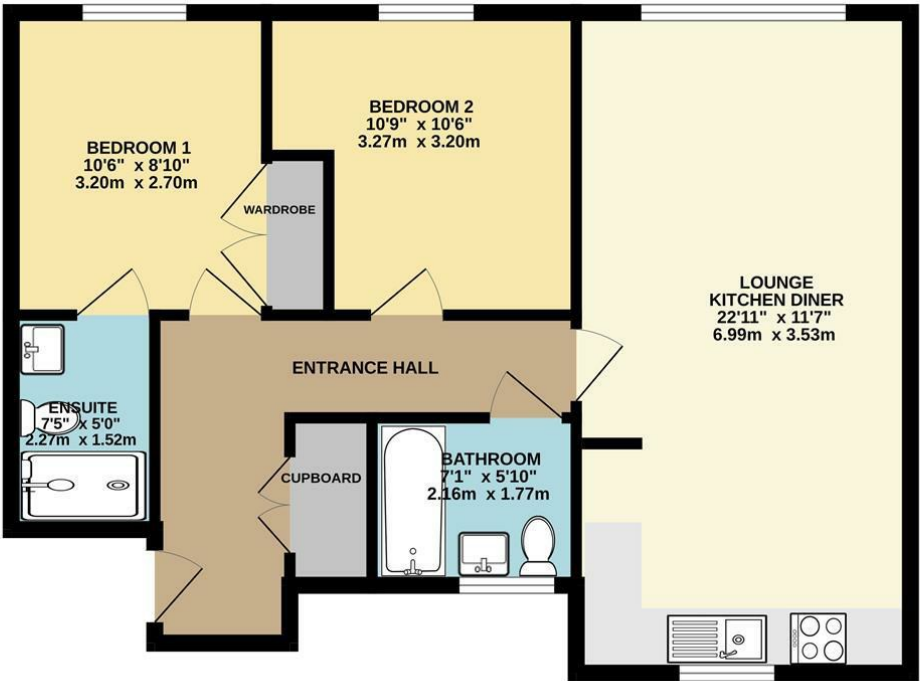


GROUND FLOOR
654 sq.ft. (60.8 sq.m.) approx.



TOTAL FLOOR AREA: 654 sq.ft. (60.8 sq.m.) approx.
Whilst every attempt has been made to ensure the accuracy of the floorplan contained here, measurements of doors, windows, rooms and any other items are approximate and no responsibility is taken for any error, omission or mis-statement. This plan is for illustrative purposes only and should be used as such by any prospective purchaser. The services, systems and appliances shown have not been tested and no guarantee as to their operability or efficiency can be given.
Made with Metropix. ©2024



Bakewell
3 Royal Oak Place
Matlock Street
Bakewell DE45 1HD
T: 01629 700699
E: bakewell@elr.co.uk

Banner Cross
888 Ecclesall Road
Banner Cross
Sheffield S11 8TP
T: 01142 683388
E: bannercross@elr.co.uk

Dore
33 Townhead Road
Sheffield
S17 3GD
T: 0114 2362420
E: dore@elr.co.uk

Hathersage
Main Road, Hathersage
Hope Valley
Derbyshire S32 1BB
T: 01433 651888
E: peakdistrict@elr.co.uk

Rotherham
149 Bawtry Road
Wickersley
Rotherham S66 2BW
T: 01709 917676
E: wickersley@elr.co.uk

**EADON
LOCKWOOD
& RIDDLE**
ESTD 1840



4, Parkside way, Rotherham, S60 8DF

Offers In The Region Of £140,000

4 Parkside way, Waverley, Rotherham,
S60 8DF

Description
Nestled on the popular Waverley development, this pristine first-floor apartment offers a fantastic opportunity to own a beautiful home with a 20% discount off the market price. This two-bedroom, two-bathroom property boasts gas central heating, UPVC double glazing, and a thoughtfully designed interior.

Ideal for first-time buyers, the home features a welcoming entrance hallway, a utility cupboard for extra storage, an open-plan living area combined with a modern kitchen, a master bedroom complete with an en-suite shower room, a second cosy bedroom, and a stylish bathroom.

Located conveniently close to Sheffield and Rotherham, as well as Catcliffe Retail Park, the Sheffield Parkway, and the M1 motorway, it ensures easy access to a variety of amenities and transport links. The property includes a designated parking space with additional visitor parking available.

Don't miss the chance to view this lovely home!

- FABULOUS TWO BEDROOM APARTMENT
- VERY WELL PRESENTED
- FIRST TIME BUYERS PROPERTY
- STUNNING OPEN PLAN KITCHING
- MASTER WITH EN-SUITE
- ALLOCATED PARKING
- CLOSE TO AMENITIES
- EARLY VIEWING IS HIGHLY RECOMMENDED
- LEASEHOLD / TAX BAND A

