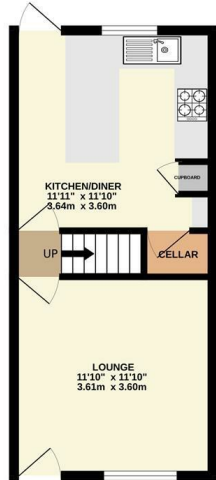
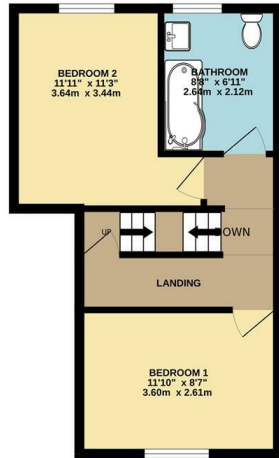


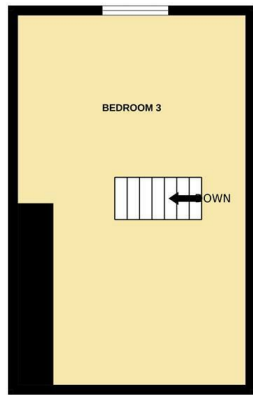
GROUND FLOOR
313 sq. ft. (29.1 sq. m.) approx.



1ST FLOOR
360 sq. ft. (33.4 sq. m.) approx.



2ND FLOOR
296 sq. ft. (27.5 sq. m.) approx.



TOTAL FLOOR AREA: 969 sq. ft. (90.1 sq. m.) approx.
Whilst every attempt has been made to ensure the accuracy of the floorplans contained here, measurements of doors, windows, rooms and any other items are approximate and no responsibility is taken for any error, omission or mis-statement. This plan is for illustrative purposes only and should be used as such by any prospective purchaser. The services, systems and appliances shown have not been tested and no guarantee as to their operability or efficiency can be given.
Made with Metropix 02024



Bakewell
3 Royal Oak Place
Matlock Street
Bakewell DE45 1HD
T: 01629 700699
E: bakewell@elr.co.uk

Banner Cross
888 Ecclesall Road
Banner Cross
Sheffield S11 8TP
T: 01142 683388
E: bannercross@elr.co.uk

Dore
33 Townhead Road
Sheffield
S17 3GD
T: 0114 2362420
E: dore@elr.co.uk

Hathersage
Main Road, Hathersage
Hope Valley
Derbyshire S32 1BB
T: 01433 651888
E: peakdistrict@elr.co.uk

Rotherham
149 Bawtry Road
Wickersley
Rotherham S66 2BW
T: 01709 917676
E: wickersley@elr.co.uk

**EADON
LOCKWOOD
& RIDDLE**
ESTD 1840



21, Cambridge Street, Rotherham, S64 9RN

Offers In The Region Of £165,000

21 Cambridge Street, Mexborough, Rotherham, S64 9RN

Description
Discover this stunning THREE BEDROOM MID-TERRACE, impeccably renovated and ready for you to move in. Situated in the popular town of Mexborough and offered with NO ONWARD CHAIN, this property is a perfect blend of modern luxury and convenience.

As you step into the ground floor, you'll be greeted by a spacious and inviting lounge, perfect for both relaxation and entertaining. This room is beautifully decorated with a contemporary touch, making it an ideal space for family gatherings or quiet evenings.

The heart of the home is the fabulous kitchen diner. Featuring sleek, modern gloss units, it provides ample storage and comes fully equipped with integrated appliances, including a fridge freezer, dishwasher, single oven, and induction hob plus a washing machine! This stylish kitchen is designed for both functionality and elegance, making it a delightful space for cooking and dining.

On the first floor, you'll find two generously sized double bedrooms. Each room is bright and airy, offering flexibility for various needs, whether it be for family members or as a potential home office. The stunning bathroom on this floor is luxuriously appointed with modern fixtures and a stylish design, including a bathtub and high-quality fittings, perfect for unwinding after a long day.

The attic has been thoughtfully converted into a spacious third bedroom. This versatile space is filled with natural light and can be adapted to suit your needs, whether as a master suite, guest room, or a private retreat.

Outside, the enclosed rear garden is a wonderful low-maintenance area with astro turf, making it perfect for children to play or for enjoying al fresco dining. The attractive fencing and gate provide convenient side access, adding to the overall functionality of the outdoor space.

This home has been meticulously renovated to the highest standards, featuring complete rewiring and new UPVC windows and Composite doors, ensuring it is both energy-efficient and long-lasting. With everything done to such a high standard, you can move in with peace of mind, knowing that no further work is needed for a long time.

Located in the vibrant town of Mexborough, this property is close to local amenities, shops, schools, and excellent transport links, making it an ideal choice for first-time buyers or investors. Whether you are looking for a place to call home or a ready-to-let investment, this house offers an outstanding opportunity.

Don't miss out on the chance to own this beautifully renovated property. Contact us today for more details or to arrange a viewing. Your dream home in Mexborough awaits!

- THREE BEDROOM MID-TERRACE
- RENOVATED TO AN EXCEPTIONAL STANDARD
- NO ONWARD CHAIN
- FABULOUS KITCHEN DINER
- STUNNING BATHROOM
- UPVC DOUBLE GLAZING
- CELLAR
- NEW BOILER
- FREEHOLD / TAX BAND A
- EARLY VIEWING HIGHLY RECOMMENDED



EADON
LOCKWOOD
& RIDDLE
ESTD 2008



EADON
LOCKWOOD
& RIDDLE
ESTD 2008



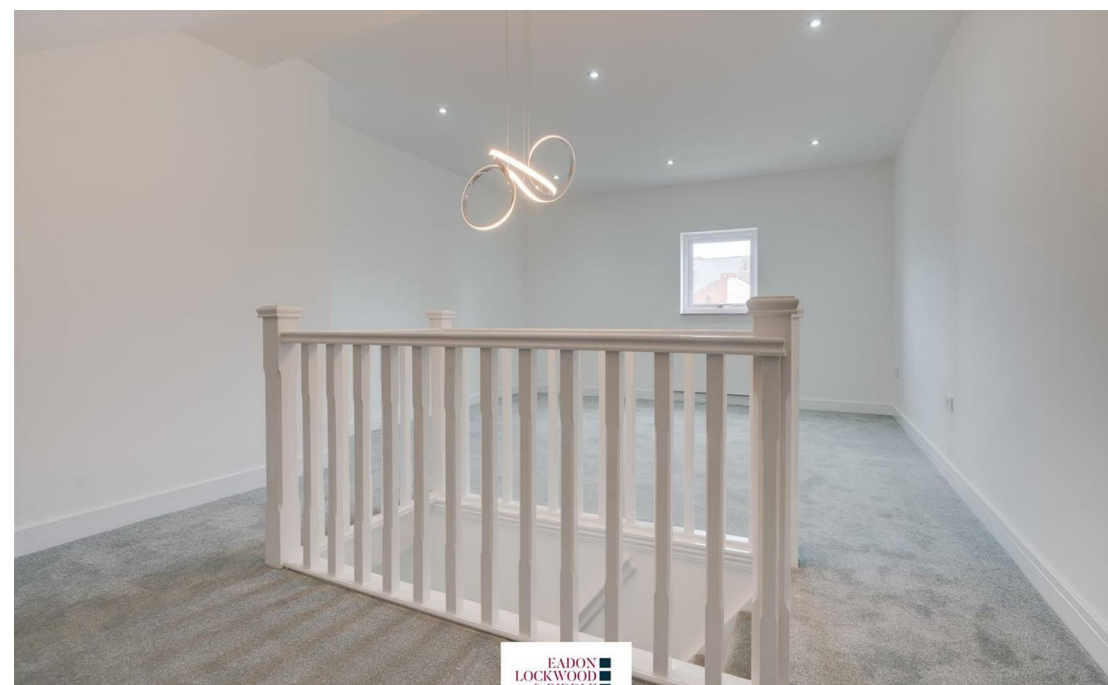
EADON
LOCKWOOD
& RIDDLE
ESTD 2008



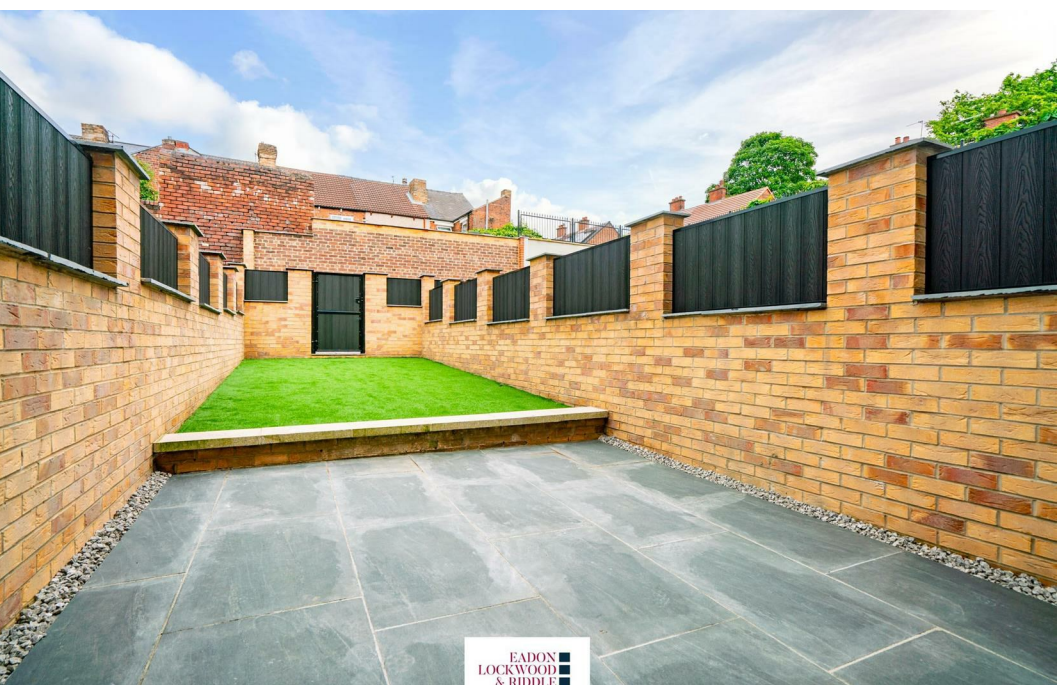
EADON
LOCKWOOD
& RIDDLE
ESTD 2008



EADON
LOCKWOOD
& RIDDLE
ESTD 2008



EADON
LOCKWOOD
& RIDDLE
ESTD 2008



EADON
LOCKWOOD
& RIDDLE
ESTD 2008