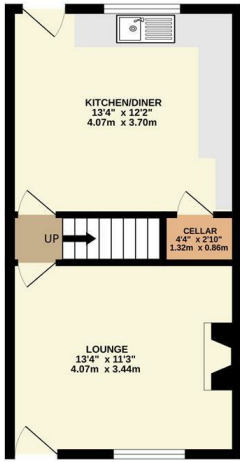
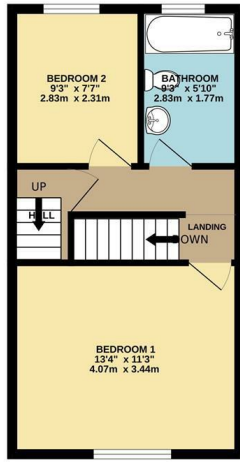


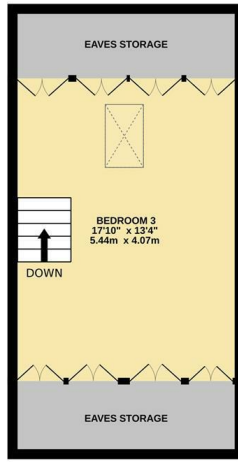
GROUND FLOOR
344 sq.ft. (32.0 sq.m.) approx.



1ST FLOOR
351 sq.ft. (32.6 sq.m.) approx.



2ND FLOOR
351 sq.ft. (32.6 sq.m.) approx.



TOTAL FLOOR AREA: 1046 sq.ft. (97.1 sq.m.) approx.
Whilst every attempt has been made to ensure the accuracy of the floorplan contained here, measurements of doors, windows, rooms and any other items are approximate and no responsibility is taken for any error, omission or mis-statement. This plan is for illustrative purposes only and should be used as such by any prospective purchaser. The services, systems and appliances shown have not been tested and no guarantee as to their operability or efficiency can be given.
Made with Metropix ©2024



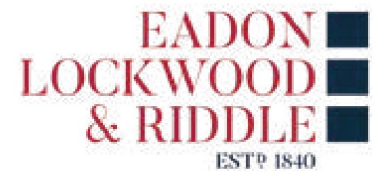
Bakewell
3 Royal Oak Place
Matlock Street
Bakewell DE45 1HD
T: 01629 700699
E: bakewell@elr.co.uk

Banner Cross
888 Ecclesall Road
Banner Cross
Sheffield S11 8TP
T: 01142 683388
E: bannercross@elr.co.uk

Dore
33 Townhead Road
Sheffield
S17 3GD
T: 0114 2362420
E: dore@elr.co.uk

Hathersage
Main Road, Hathersage
Hope Valley
Derbyshire S32 1BB
T: 01433 651888
E: peakdistrict@elr.co.uk

Rotherham
149 Bawtry Road
Wickersley
Rotherham S66 2BW
T: 01709 917676
E: wickersley@elr.co.uk



10, North Street, Rotherham, S62 5NH

£125,000

10 North Street, Rawmarsh, Rotherham,
S62 5NH

DESCRIPTION

ELR proudly presents this impressive TWO BEDROOM END TERRACE property featuring a converted attic space. Impeccably maintained and tastefully presented, this home offers a blend of comfort, convenience, and style. Ideal for FIRST-TIME BUYERS, this property is of a high standard and comes complete with an abundance of extras including an alarm system and two wall mounted TV's.

Step inside to a welcoming lounge, tastefully decorated and featuring a cosy log burner fire, setting the scene for relaxation. This spacious modern kitchen diner boasts an integrated single oven, a five-ring gas hob and essential appliances such as a washing machine and a spacious fridge freezer. Plus, enjoy the added luxury of a wall-mounted TV.

Ascend to the first floor to discover two generously sized bedrooms, each equipped with wardrobes for ample storage. The adjacent bathroom offers a tranquil retreat with a white three-piece suite and a shower over the bath, ensuring relaxation after a long day.

Venture up to the converted attic space, accessible via charming cabin steps, to unveil a versatile area. Whether you envision it as a home office or an additional bedroom, this loft offers endless possibilities to suit your lifestyle needs.

This property boasts a functional cellar, complete with a submersible pump, providing practical storage solutions.

The vendor has gone the extra mile by including all furnishings and appliances seen within the property, from the wall-mounted TV in the loft to the inviting sofa in the lounge. Simply move in and start living your dream lifestyle hassle-free.

So if you are looking for a property where you can just move in and relax, then look no further!! Whether you're a first-time buyer, investor or downsizing, this property is not to be missed.

For further information or to arrange a viewing, please don't hesitate to contact us. Your dream home awaits!

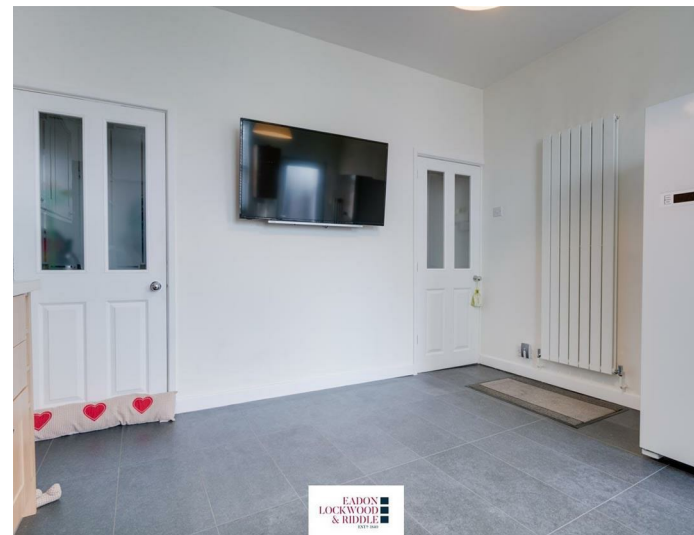
- TWO BEDROOM END TERRACE
- NO ONWARD CHAIN
- PERFECT FIRST TIME BUYERS HOME
- VERSATILE LOFT CONVERSION
- MODERN KITCHEN WITH INTEGRATED APPLIANCES
- ALARM SYSTEM
- HIGH STANDARD THROUGHOUT
- UPVC DOUBLE GLAZING AND GAS CENTRAL HEATING
- FREEHOLD / TAX BAND A
- EARLY VIEWING IS ESSENTIAL



EADON
LOCKWOOD



EADON
LOCKWOOD
& RIDDLE



EADON
LOCKWOOD
& RIDDLE



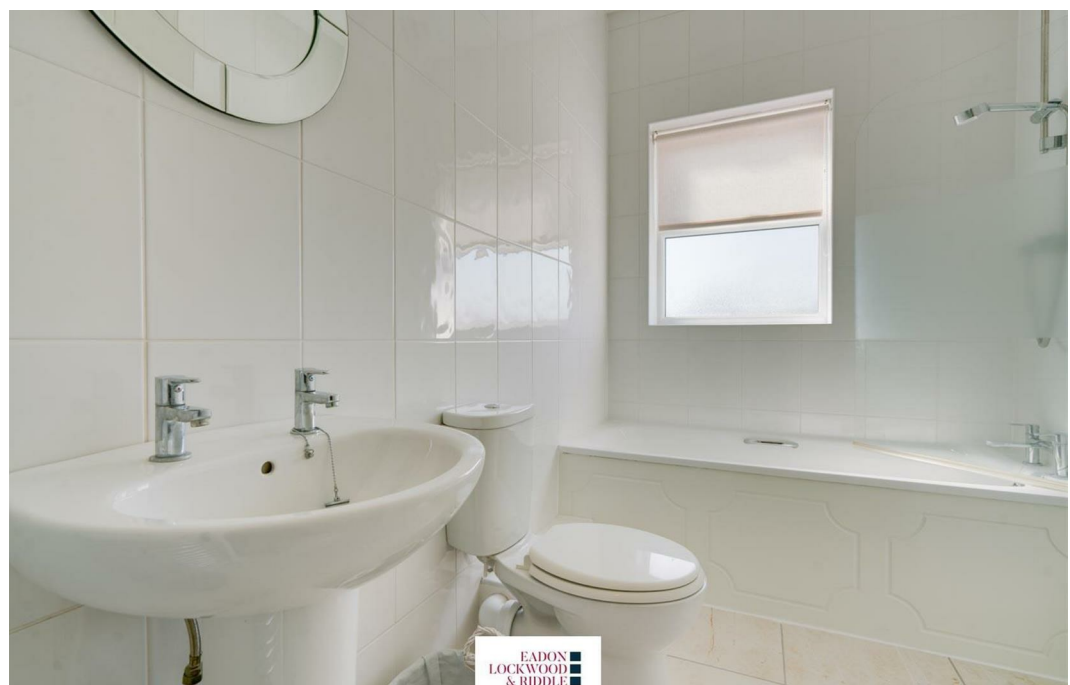
EADON
LOCKWOOD
& RIDDLE



EADON
LOCKWOOD
& RIDDLE



EADON
LOCKWOOD
& RIDDLE



EADON
LOCKWOOD
& RIDDLE