

Bakewell
3 Royal Oak Place
Matlock Street
Bakewell DE45 1HD
T: 01629 700699
E: bakewell@elr.co.uk

Banner Cross
888 Ecclesall Road
Banner Cross
Sheffield S11 8TP
T: 01142 683388
E: bannercross@elr.co.uk

Dore
33 Townhead Road
Sheffield
S17 3GD
T: 0114 2362420
E: dore@elr.co.uk

Hathersage
Main Road, Hathersage
Hope Valley
Derbyshire S32 1BB
T: 01433 651888
E: peakdistrict@elr.co.uk

Rotherham
149 Bawtry Road
Wickersley
Rotherham S66 2BW
T: 01709 917676
E: wickersley@elr.co.uk

**EADON
LOCKWOOD
& RIDDLE**
ESTD 1840



**EADON
LOCKWOOD
& RIDDLE**
ESTD 1840

EADON

3 Old School Yard, School Hill, Rotherham,
S60 4JB

Guide Price £600,000

3 Old School Yard School Hill, Whiston, Rotherham, S60 4JB

Description
 Guide Price £600,000 - £630,000
 Nestled at the heart of Whiston village, this stunning family home boasts a semi-secluded location on a private road. The property has been thoughtfully extended by the current owners, notably at the rear, where an inviting open-plan kitchen-diner with a connecting seating area has been meticulously designed. Here, the inclusion of bi-fold doors seamlessly integrates the indoor and outdoor spaces, allowing you to immerse yourself in the beautifully landscaped rear garden.

As you step inside through the composite door, you're immediately greeted by a sense of quality and elegance. A wooden and glass staircase takes centre stage, offering access to the first floor. At the end of the hallway, you'll find a versatile room that can serve as a fourth bedroom, a cozy snug, an ideal home office, or even a personal gym. This space also features a modern WC with a washbasin and a discreetly concealed central heating boiler.

The open-plan kitchen is a true culinary haven, equipped with high-end Neff appliances and a gloss finished units. An island houses a Neff Induction hob and a double wine chiller opposite, while cleverly designed corner storage adds to its functionality. Adjoining the kitchen, a charming seating area provides a perfect spot to enjoy the garden views. A separate dining area at the front of the house seamlessly flows into the living room, which enjoys dual aspects, overlooking both the front and rear gardens. The living room is further enhanced by a striking log burner sitting atop a slate hearth, complemented by a media wall above.

On the first floor, you'll discover three generously proportioned bedrooms. The Principal bedroom is a spacious retreat, complete with an array of fitted wardrobes, offering ample hanging and shelving space, along with a concealed dresser unit. Bedroom 2 features a walk-in wardrobe, adding to its appeal. The house bathroom is a sight to behold, featuring a contemporary white suite, complete with a generously sized walk-in shower, a panelled bath, and a stylish vanity washbasin. For added convenience, there is also a separate WC and washbasin, making it ideal for a household with multiple occupants.

Outside, the property is graced by electric gates that can be operated via a smartphone app when you're away or by remote control when you're at home. The driveway provides ample off-road parking for several vehicles, leading to a single garage with an electrically operated door. The enchanting landscaped gardens envelop the property on three sides, offering various patio areas that capture the morning and evening sun. The garden also features a shed with power and light, a water feature, and carefully planned border trees.

In addition to the property's impressive features, its location is a notable advantage. It is within walking distance of three charming village pubs and a local chemist. For commuters, quick access to the M1 motorway and Sheffield Parkway, located approximately 2 miles away, provides ease of travel. Conversely, Ulley Country Park offers a tranquil escape in the opposite direction.

In summary, this property is a remarkable family home, thoughtfully designed, and impeccably maintained, offering a seamless blend of indoor and outdoor living in a picturesque Whiston village setting.

- A beautifully well presented & extended 3/4 double bedded detached home
- Situated to a corner position upon a Private Road
- Security alarm, electric front gates & CCTV for added protection
- Fantastic open plan kitchen diner with bi fold doors to rear garden
- Ground floor WC
- Single garage & spacious driveway for upto 5 vehicles.
- Close to Whiston Church & open spaces for country walks
- Located within approx. 300 yds from 3 village pubs
- Internal viewing highly recommended to be appreciated.
- Freehold. Council Tax Band E



EADON LOCKWOOD



EADON LOCKWOOD & RIDDLE



EADON LOCKWOOD & RIDDLE



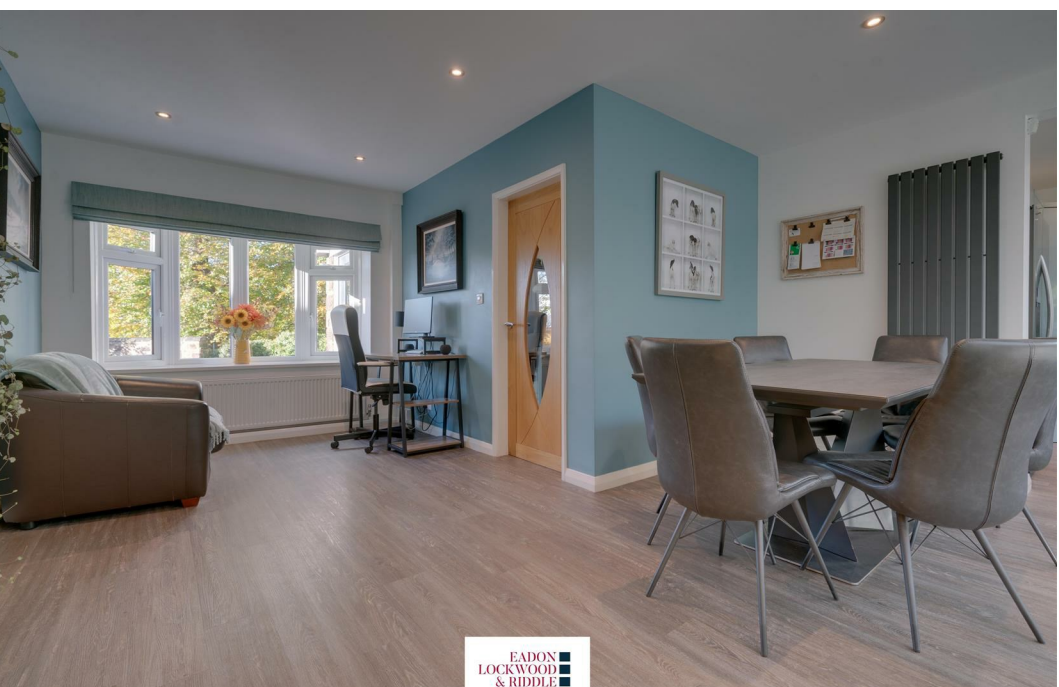
EADON LOCKWOOD & RIDDLE



EADON LOCKWOOD & RIDDLE



EADON LOCKWOOD & RIDDLE



EADON LOCKWOOD & RIDDLE