

Red Road, Borehamwood

£1,650 Per Month ()

VILLAGE
E S T A T E S



This spacious two-bedroom first-floor flat is available to rent now. The property features an open-plan kitchen/reception room, a family bathroom, and ample storage throughout.

Set within a well-maintained development, the flat benefits from communal gardens, an allocated parking space, and an external storage unit.

Ideally located on the popular Red Road, the property is within easy walking distance of a wide range of local amenities, including Elstree & Borehamwood train station, offering convenient access into central London.

Offered on an unfurnished basis.

020 3764 2222
www.village-estates.co.uk



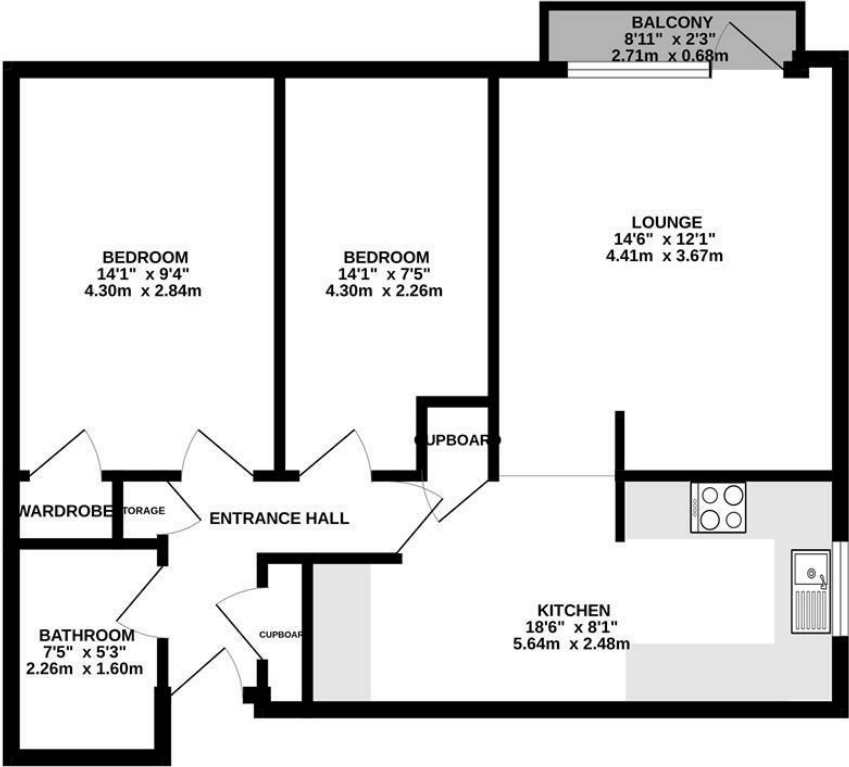
Village Estates
The Corner Shop High Street, Elstree
Herts WD6 3BY

Important Note: These particulars do not form part of any contract. All measurements are approximate and should not be relied upon. All prices quoted are strictly subject to contract.

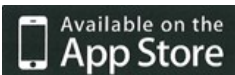




GROUND FLOOR
646 sq.ft. (60.0 sq.m.) approx.



TOTAL FLOOR AREA: 646 sq.ft. (60.0 sq.m.) approx.
Whilst every attempt has been made to ensure the accuracy of the floorplan contained here, measurements of doors, windows, rooms and any other items are approximate and no responsibility is taken for any error, omission or mis-statement. This plan is for illustrative purposes only and should be used as such by any prospective purchaser. The services, systems and appliances shown have not been tested and no guarantee as to their operability or efficiency can be given.
Made with Metropix ©2026



Energy Efficiency Rating		
	Current	Potential
Very energy efficient - lower running costs		
(92 plus) A		
(81-91) B		
(69-80) C		
(55-68) D		
(39-54) E		
(21-38) F		
(1-20) G		
Not energy efficient - higher running costs		
England & Wales		
EU Directive 2002/91/EC		