

**Allerton Road, Borehamwood**

**£1,950 ()**

**VILLAGE**  
E S T A T E S



This 3 bedroom home is available to rent furnished or unfurnished from NOW! The property comprises a porch, good sized lounge/dining room, kitchen and conservatory. Upstairs is home to two double bedrooms, a single bedroom, WC and family bathroom. Externally the property has a driveway and a landscaped rear garden.

Located in a quiet Borehamwood avenue, the property is within walking distance to local shops, cafe's, post office, primary school, 292 bus route and just a short bus or car ride away from Borehamwood's high street, mainline station and fantastic shopping facilities.

Must See!

No pets

Please note that to rent this property you need a combined salary of £58,500

**020 3764 2222**  
**[www.village-estates.co.uk](http://www.village-estates.co.uk)**



Village Estates  
The Corner Shop High Street, Elstree  
Herts WD6 3BY

Important Note: These particulars do not form part of any contract. All measurements are approximate and should not be relied upon. All prices quoted are strictly subject to contract.





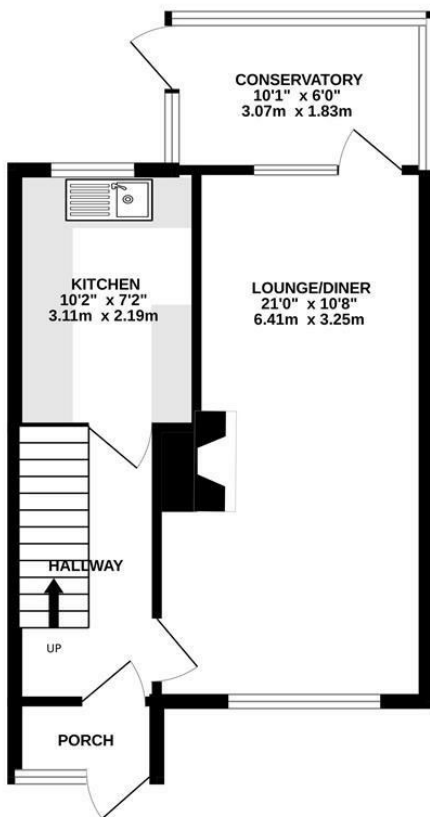




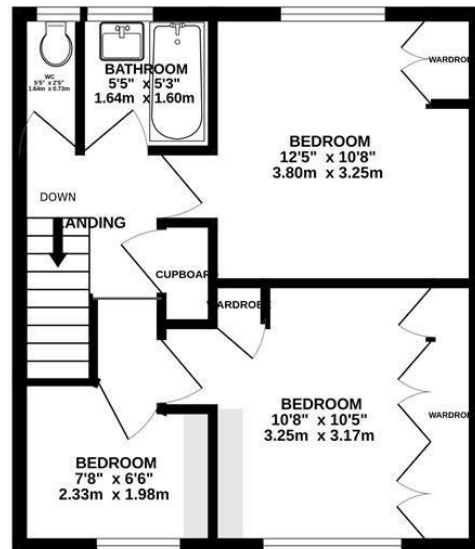




GROUND FLOOR  
409 sq.ft. (38.0 sq.m.) approx.



1ST FLOOR  
380 sq.ft. (35.3 sq.m.) approx.



TOTAL FLOOR AREA: 790 sq.ft. (73.4 sq.m.) approx.

Whilst every attempt has been made to ensure the accuracy of the floorplan contained here, measurements of doors, windows, rooms and any other items are approximate and no responsibility is taken for any error, omission or mis-statement. This plan is for illustrative purposes only and should be used as such by any prospective purchaser. The services, systems and appliances shown have not been tested and no guarantee as to their operability or efficiency can be given.  
Made with Metropix ©2025



Available on the  
**App Store**



ANDROID APP ON  
**Google play**

Energy Efficiency Rating		
	Current	Potential
Very energy efficient - lower running costs		
(92 plus) <b>A</b>		
(81-91) <b>B</b>		
(69-80) <b>C</b>		
(55-68) <b>D</b>		
(39-54) <b>E</b>		
(21-38) <b>F</b>		
(1-20) <b>G</b>		
Not energy efficient - higher running costs		
<b>England &amp; Wales</b>	EU Directive 2002/91/EC	