

Lullington Garth, Borehamwood

£860,000 (Freehold)



This extended 4 bedroom semi detached family home is located on one of Borehamwood's most sought after roads, Lullington Garth. On the south side of Borehamwood and a short stroll down to the high street where you will find an array of shops, restaurants, coffee shops, places of worship and the mainline station with a great service into London. The property is also perfectly placed for the areas finest schools including Yavneh College and Primary School. The property boasts a wealth of living accommodation including:- entrance hall, large lounge, large dining room, kitchen/breakfast room, study and downstairs shower room. The first floor has a master bedroom a further 3 bedrooms with storage and a spacious family bathroom including bath and shower. Externally there is a large south west facing rear garden with patio for entertaining and a block paved driveway with parking for multiple cars.

020 3764 2222
www.village-estates.co.uk



Village Estates
The Corner Shop High Street, Elstree
Herts WD6 3BY

Important Note: These particulars do not form part of any contract. All measurements are approximate and should not be relied upon. All prices quoted are strictly subject to contract.

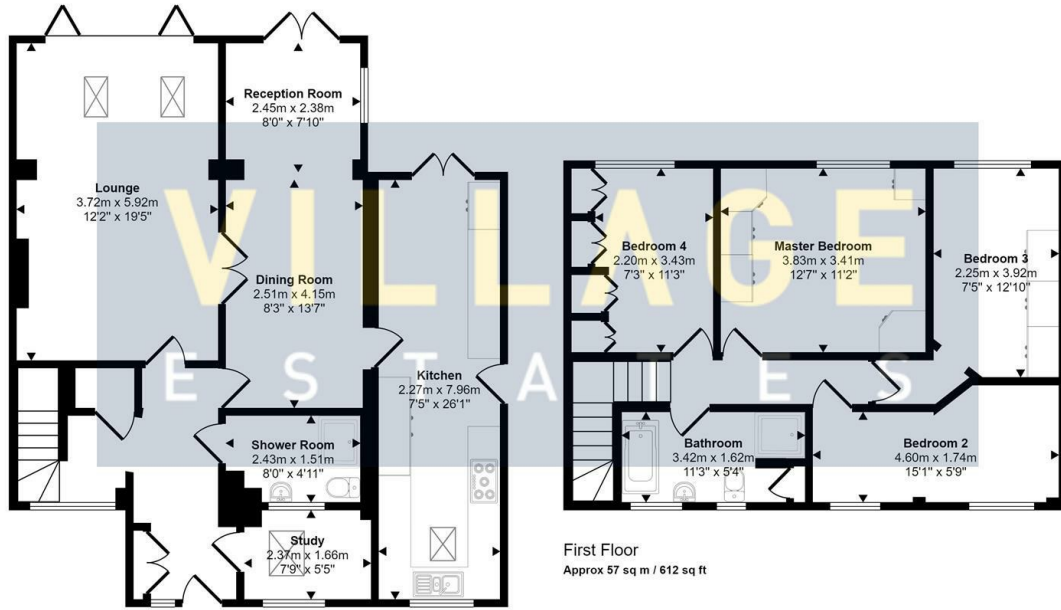








Approx Gross Internal Area
140 sq m / 1504 sq ft



Ground Floor
Approx 83 sq m / 891 sq ft

This floorplan is only for illustrative purposes and is not to scale. Measurements of rooms, doors, windows, and any items are approximate and no responsibility is taken for any error, omission or mis-statement. Icons of items such as bathroom suites are representations only and may not look like the real items. Made with Made Snappy 360.



Available on the
App Store



ANDROID APP ON
Google play

Energy Efficiency Rating		
	Current	Potential
Very energy efficient - lower running costs		
(92 plus) A		
(81-91) B		
(69-80) C		
(55-68) D		
(39-54) E		
(21-38) F		
(1-20) G		
Not energy efficient - higher running costs		
England & Wales		EU Directive 2002/91/EC