

Croxdale Road, Borehamwood

£510,000 (Freehold)

VILLAGE
E S T A T E S



This 3 bedroom terraced home is located in Prime Borehamwood, within walking distance of Borehamwood & Elstree station, shopping park and Borehamwood's bustling High Street. Croxdale Road Synagogue, local shops and access to Aberford Park is just a five minute walk away.

This well proportioned home offers 800 sq ft of accommodation including porch, entrance hall, lounge, and kitchen/dining room. To the first floor is a double bedroom with fitted wardrobes, a further two good sized bedrooms, family bathroom and separate W/C. Bedroom 3 is currently accessed via bedroom 2 but this could be changed.

Externally there is a driveway providing off street parking and a fabulous 85ft south facing garden providing all day sun for entertaining.

020 3764 2222
www.village-estates.co.uk

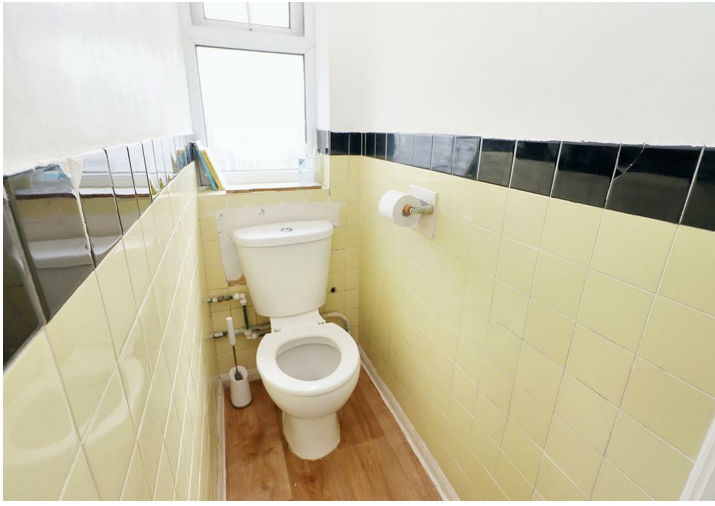


Village Estates
The Corner Shop High Street, Elstree
Herts WD6 3BY

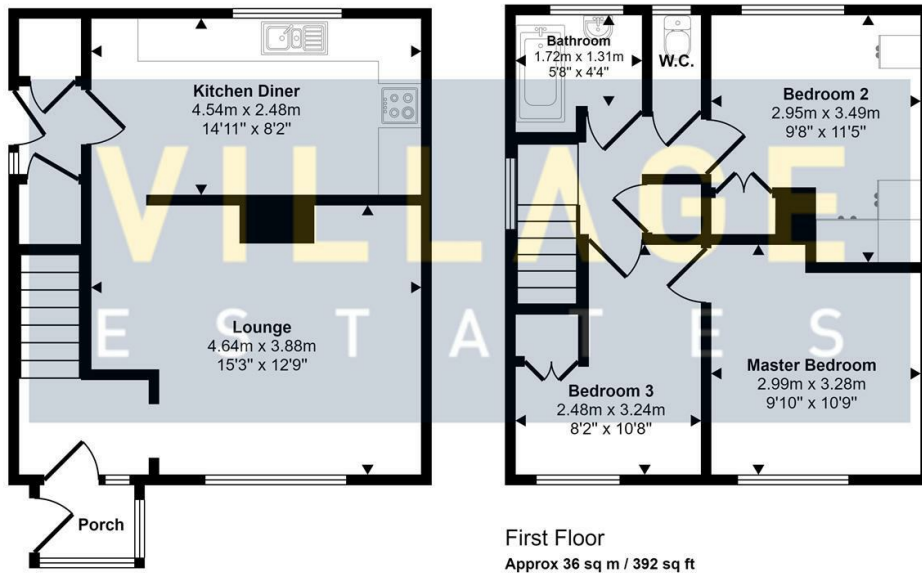
Important Note: These particulars do not form part of any contract. All measurements are approximate and should not be relied upon. All prices quoted are strictly subject to contract.







Approx Gross Internal Area
74 sq m / 800 sq ft



Ground Floor
Approx 38 sq m / 408 sq ft

This floorplan is only for illustrative purposes and is not to scale. Measurements of rooms, doors, windows, and any items are approximate and no responsibility is taken for any error, omission or mis-statement. Icons of items such as bathroom suites are representations only and may not look like the real items. Made with Made Snappy 360.



Available on the
App Store



ANDROID APP ON
Google play

Energy Efficiency Rating		Current	Potential
Very energy efficient - lower running costs			
(92 plus) A			86
(81-91) B			
(69-80) C		71	
(55-68) D			
(39-54) E			
(21-38) F			
(1-20) G			
Not energy efficient - higher running costs			
England & Wales		EU Directive 2002/91/EC	