

Chaucer Grove, Borehamwood

£365,000 (Leasehold)

VILLAGE
ESTATES



This well presented 2 BED 2 BATH FLAT is located in a quiet cul-de-sac on the SOUTH SIDE of Borehamwood. Just a few minutes by foot to the mainline station with brilliant access in to London and a short walk to the High Street with all the amenities that has to offer. The property is also perfectly placed for the areas best local schools including Yavneh college and Primary.

The property boasts a master bedroom with fitted wardrobes and en-suite shower room, second bedroom, family bathroom and an open plan kitchen/dining/living room with fitted appliances.

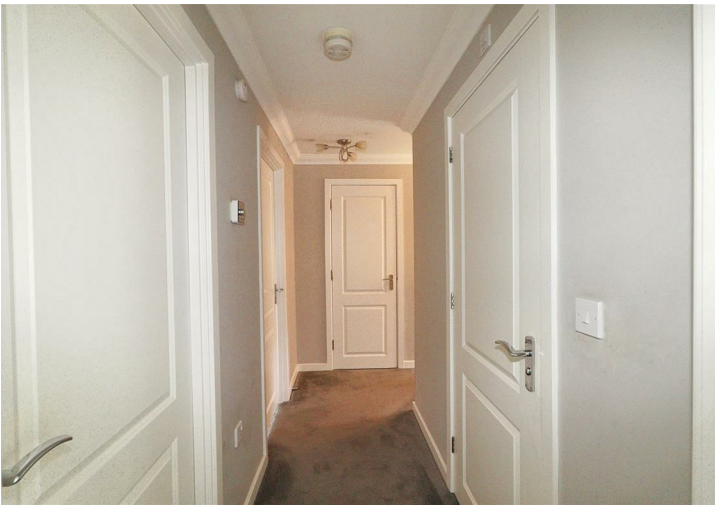
Externally there is one allocated residents space plus visitor parking as well as a well maintained communal garden.

020 3764 2222
www.village-estates.co.uk



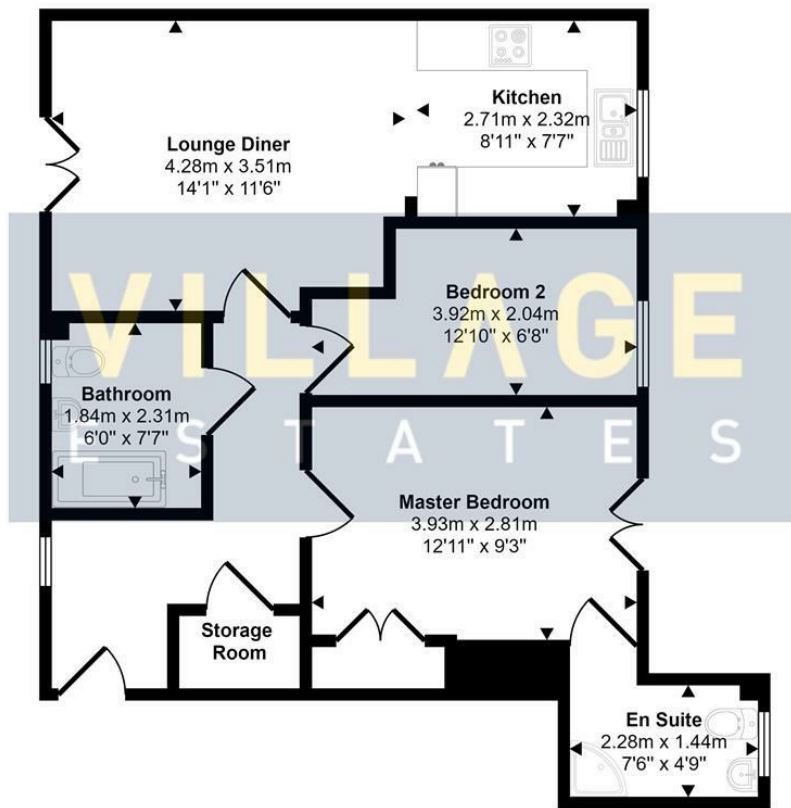
Village Estates
The Corner Shop High Street, Elstree
Herts WD6 3BY

Important Note: These particulars do not form part of any contract. All measurements are approximate and should not be relied upon. All prices quoted are strictly subject to contract.



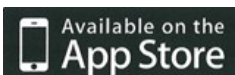


Approx Gross Internal Area
61 sq m / 656 sq ft



Floorplan

This floorplan is only for illustrative purposes and is not to scale. Measurements of rooms, doors, windows, and any items are approximate and no responsibility is taken for any error, omission or mis-statement. Icons of items such as bathroom suites are representations only and may not look like the real items. Made with Made Snappy 360.



Energy Efficiency Rating		Current	Potential
Very energy efficient - lower running costs			
(92 plus) A			
(81-91) B			
(69-80) C			
(55-68) D			
(39-54) E			
(21-38) F			
(1-20) G			
Not energy efficient - higher running costs			
England & Wales		EU Directive 2002/91/EC	