

**Howard Drive,  
£2,000 ()**

**VILLAGE  
ESTATES**



Welcome to this charming terraced house located on Howard Drive in the sought-after area of Borehamwood. This property boasts a cosy reception room, perfect for relaxing with family and friends. With three bedrooms, there is ample space for a growing family or for those in need of a home office or guest room.

The house features a well-maintained bathroom, ensuring convenience and comfort for all residents. Situated in a peaceful neighbourhood, this property offers a tranquil retreat from the hustle and bustle of everyday life.

Howard Drive is known for its friendly community atmosphere and proximity to local amenities, schools, and green spaces. Whether you enjoy leisurely walks in the park or shopping in nearby boutiques, this location has something for everyone.

Don't miss the opportunity to make this lovely house your new home. Contact us today to arrange a viewing and experience the warmth and comfort that this property has to offer.

Available mid September

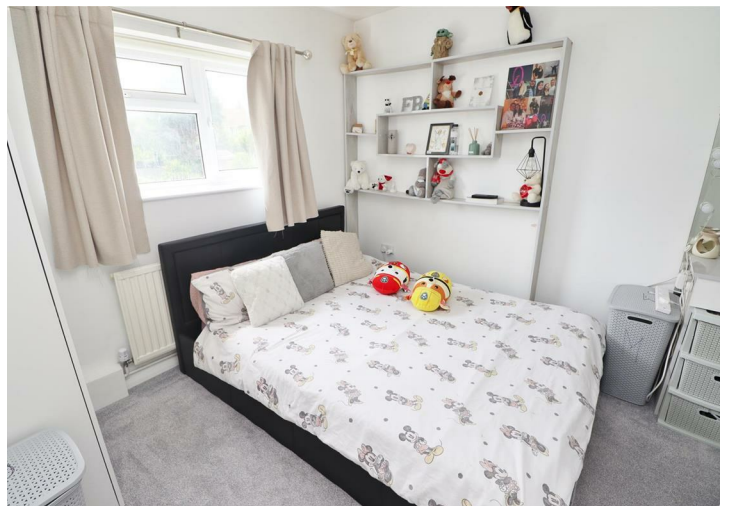
NO PETS!

**020 3764 2222**  
[www.village-estates.co.uk](http://www.village-estates.co.uk)

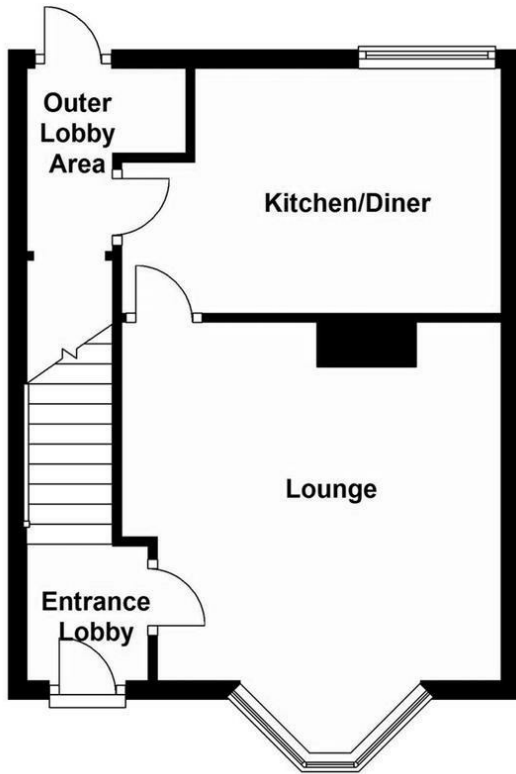


Village Estates  
The Corner Shop High Street, Elstree  
Herts WD6 3BY

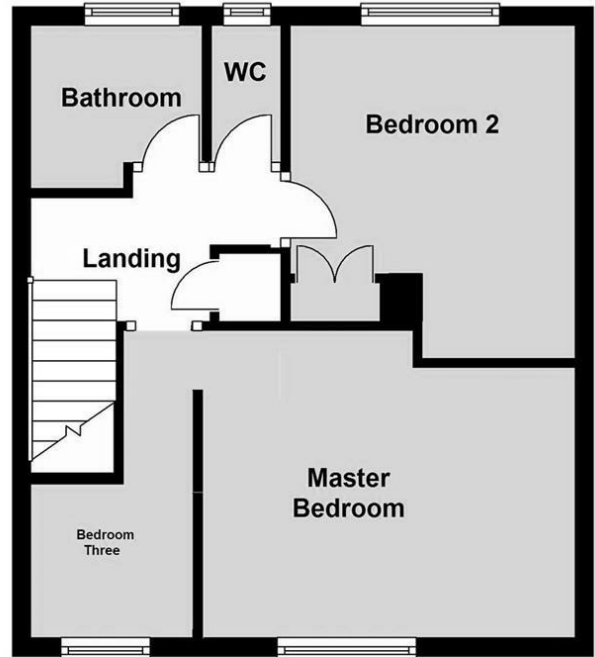
Important Note: These particulars do not form part of any contract. All measurements are approximate and should not be relied upon. All prices quoted are strictly subject to contract.



### Ground Floor



### First Floor



This floor plan is intended as a guide to layout and is for identification purposes only. It is not to scale and any measurements should not be relied upon. Plan produced using PlanUp.



Available on the  
**App Store**



ANDROID APP ON  
**Google play**

Energy Efficiency Rating		Current	Potential
<i>Very energy efficient - lower running costs</i>			
(92 plus) <b>A</b>			<b>84</b>
(81-91) <b>B</b>			
(69-80) <b>C</b>			
(55-68) <b>D</b>		<b>57</b>	
(39-54) <b>E</b>			
(21-38) <b>F</b>			
(1-20) <b>G</b>			
<i>Not energy efficient - higher running costs</i>			
<b>England &amp; Wales</b>		EU Directive 2002/91/EC	