

**Malden Road, Borehamwood**

**£479,950 (Freehold)**

**VILLAGE**  
E S T A T E S



**\*\* CHAIN FREE \*\*** This Victorian 3 BED home sits in a quiet cul-de-sac just minutes away from the hustle and bustle of Borehamwood High street. Elstree & Borehamwood station is just a short walk away in addition to the huge array of amenities on your doorstep.

This charming home comprises of large lounge dining room with bay window, kitchen with appliances and breakfast bar, downstairs bathroom and separate W/C. The top floor boasts a master bedroom with w/c, second bedroom with fitted wardrobe and third bedroom.

Externally there is a 50ft south facing garden with good size patio which is ideal for a family or entertaining. There is residents parking on the road to the front and space for visitors with permits.

Further benefits include sash double glazed windows throughout, recently installed kitchen and a boarded loft for storage.

**020 3764 2222**  
[www.village-estates.co.uk](http://www.village-estates.co.uk)



Village Estates  
The Corner Shop High Street, Elstree  
Herts WD6 3BY

Important Note: These particulars do not form part of any contract. All measurements are approximate and should not be relied upon. All prices quoted are strictly subject to contract.











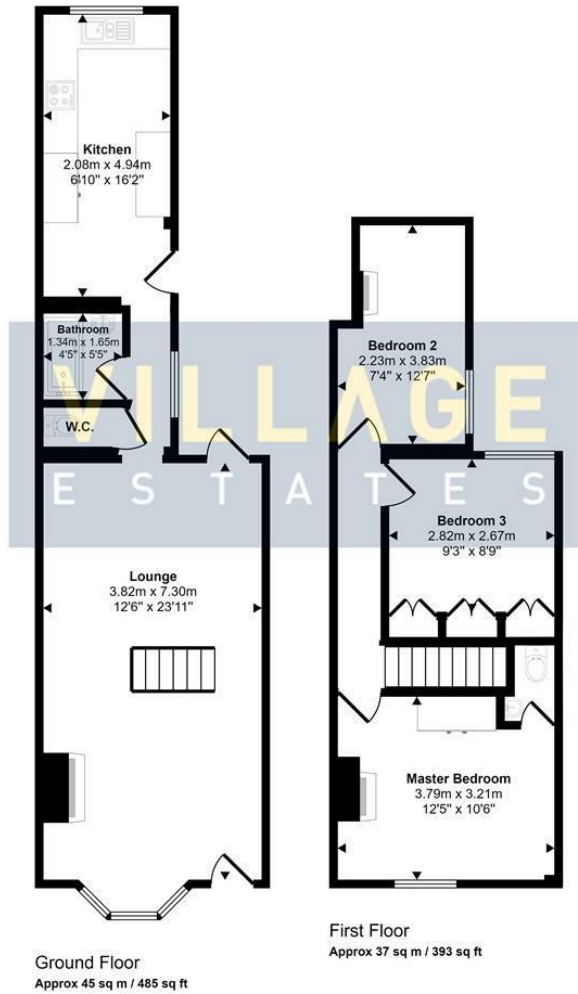




360 Tour



Approx Gross Internal Area  
62 sq m / 879 sq ft



This floorplan is only for illustrative purposes and is not to scale. Measurements of rooms, doors, windows, and any items are approximate and no responsibility is taken for any error, omission or mis-statement. Icons of items such as bathroom suites are representations only and may not look like the real items. Made with Made Snappy 360.



Energy Efficiency Rating		Current	Potential
Very energy efficient - lower running costs			
(92 plus)	A		89
(61-91)	B		
(69-80)	C	69	
(55-68)	D		
(39-54)	E		
(21-38)	F		
(1-20)	G		
Not energy efficient - higher running costs			
England & Wales		EU Directive 2002/91/EC	