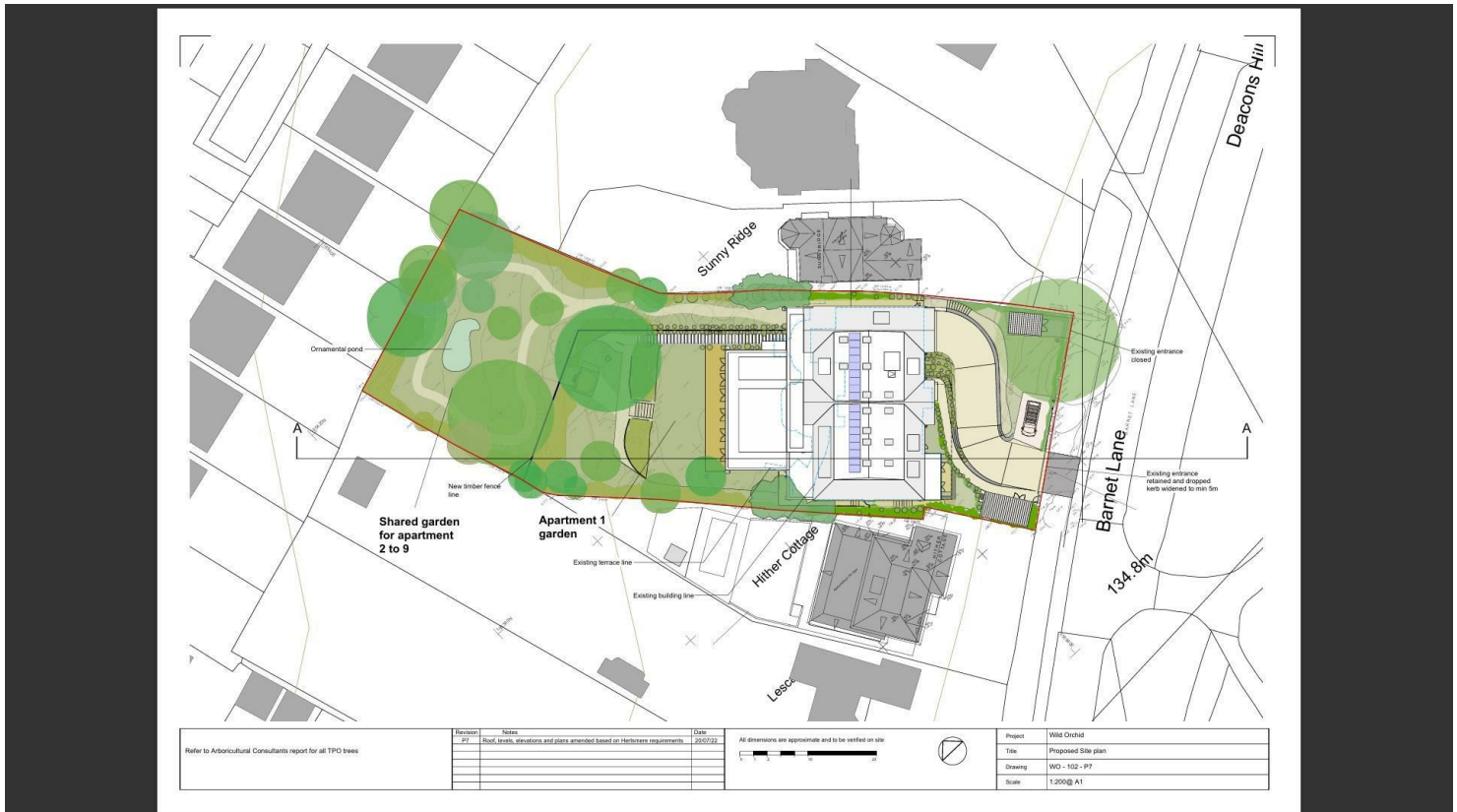


Barnet Lane, Borehamwood

£3,500,000 (Freehold)



Unique Development Opportunity - WITH FULL PLANNING CONSENT for 9 high-end apartments.

Nestled on Barnet Lane in Elstree, this remarkable seven-bedroom detached mansion sits on an expansive plot spanning 0.66 acres. Boasting over 9,000 sq ft of living space spread across FIVE floors, it presents an exceptional canvas for transformation, with approved plans to craft 9 luxury apartments totaling approximately 14,000 Sq. Ft, complete with underground parking facilities.

The property welcomes with a majestic sweeping driveway flanked by mature shrubbery and trees, ensuring privacy and seclusion from the thoroughfare. A stunning rear garden, measuring roughly 220ft x 108ft, adds to the allure of the estate.

Wild Orchid enjoys a prime location in Elstree, surrounded by idyllic countryside and verdant woodlands. Its proximity to excellent transport links ensures easy access to the city and neighboring counties.

The area boasts renowned educational institutions such as Haberdashers for boys and girls, Aldenham School, Yavneh College & Primary School, and Radlett Prep. Residents can relish a plethora of outdoor pursuits, from golfing and horseback riding to scenic hikes in the surrounding countryside.

020 3764 2222
www.village-estates.co.uk



Village Estates
The Corner Shop High Street, Elstree
Herts WD6 3BY

Important Note: These particulars do not form part of any contract. All measurements are approximate and should not be relied upon. All prices quoted are strictly subject to contract.

Bin Container Calculation	Capacity	Containers	Total capacity
General waste	9x300x1900	2 x 1100L	2200L
Commingled recycling	9x300x1900	2 x 1100L	2200L
Green waste	9x300x1900	2 x 240L	480L
Paper recycling	9x300x1900	2 x 240L	480L
Possible future storage	9x300x1900	2 x 360L	720L
TOTAL:			6320L

Example of horizontal cedar cladding to bin store

Bin store plan 125sqm

133.77

134.47

Key plan 1:200sqm

Bin store

Project: 9800-Durham
 Title: Proposed ground floor plan
 Date: 06/11/2017
 Scale: 1:1000 A1

Bin store plan 125sqm

133.77

134.47

Project: 9800-Durham
 Title: Proposed ground floor plan
 Date: 06/11/2017
 Scale: 1:1000 A1

Bin store plan 125sqm

133.77

134.47

Project: 9800-Durham
 Title: Proposed ground floor plan
 Date: 06/11/2017
 Scale: 1:1000 A1

Bin store plan 125sqm

133.77

134.47

Project: 9800-Durham
 Title: Proposed ground floor plan
 Date: 06/11/2017
 Scale: 1:1000 A1

Bin store plan 125sqm

133.77

134.47

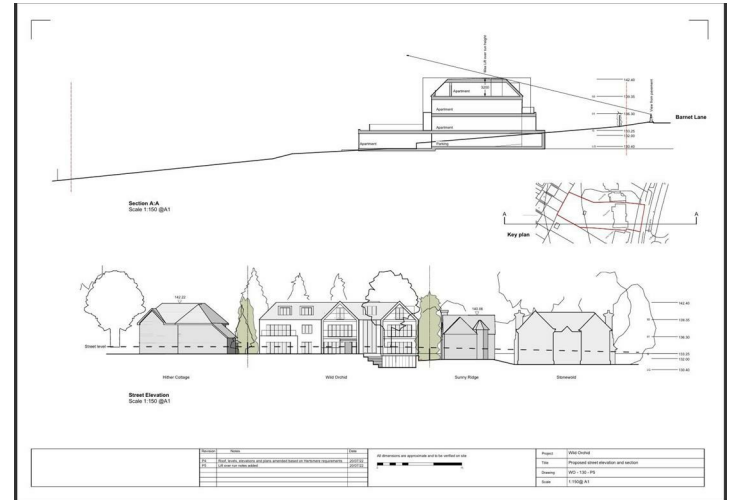
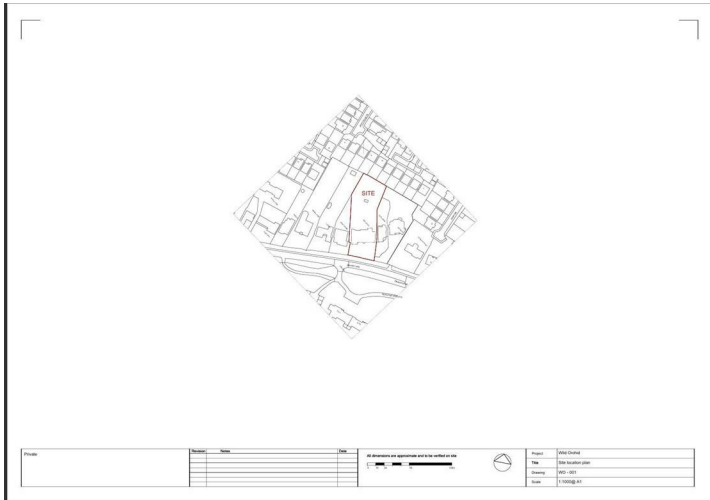
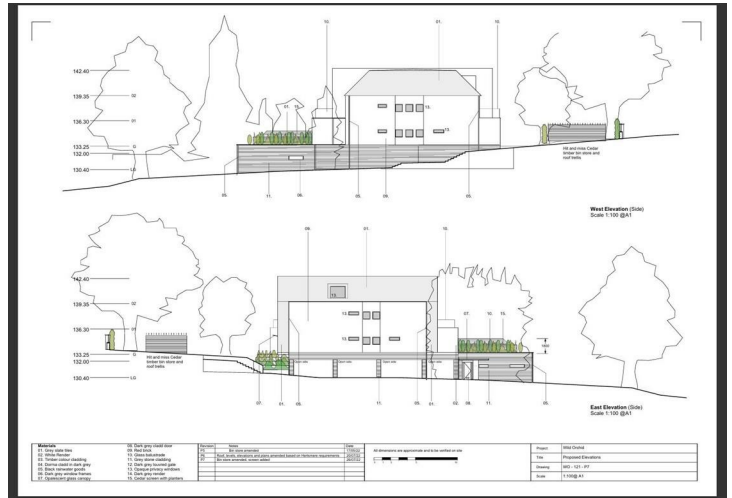
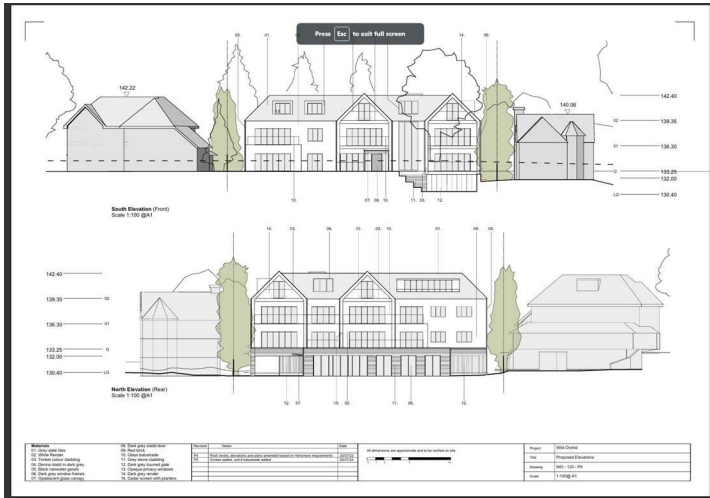
Project: 9800-Durham
 Title: Proposed ground floor plan
 Date: 06/11/2017
 Scale: 1:1000 A1

Bin store plan 125sqm

133.77

134.47

Project: 9800-Durham
 Title: Proposed ground floor plan
 Date: 06/11/2017
 Scale: 1:1000 A1





Available on the
App Store



ANDROID APP ON
Google play

Energy Efficiency Rating		
	Current	Potential
<i>Very energy efficient - lower running costs</i>		
(92 plus) A		
(81-91) B		
(69-80) C		
(55-68) D		
(39-54) E		
(21-38) F		
(1-20) G		
<i>Not energy efficient - higher running costs</i>		
England & Wales	EU Directive 2002/91/EC	