

Summer Grove, Borehamwood

£599,950 (Freehold)

VILLAGE
E S T A T E S



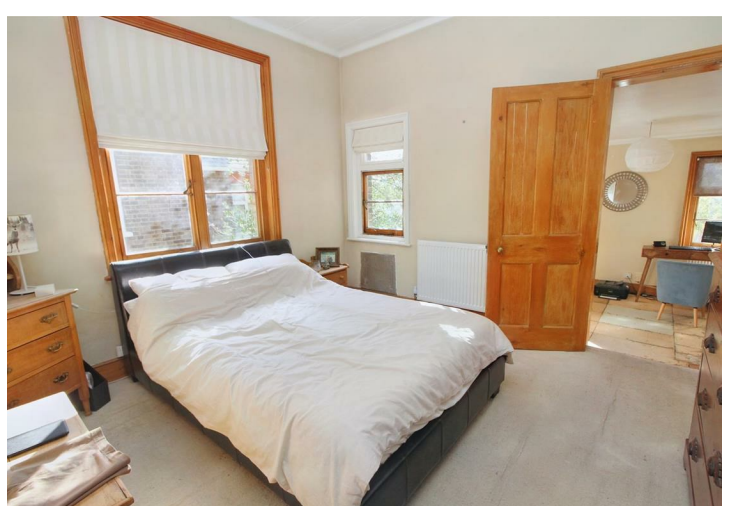
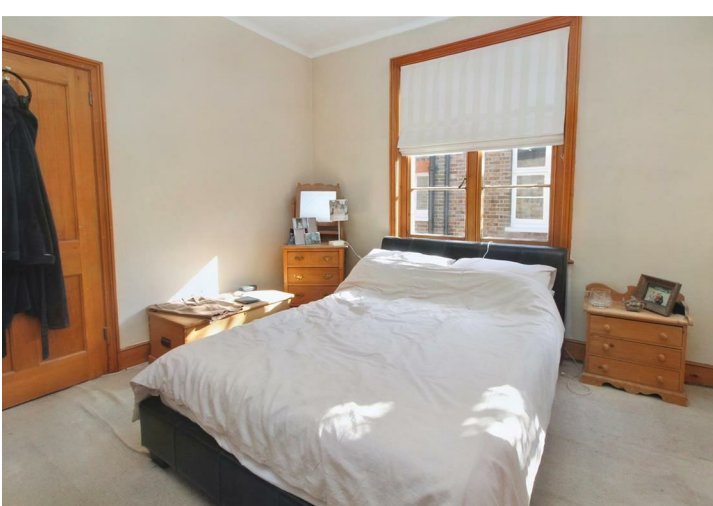
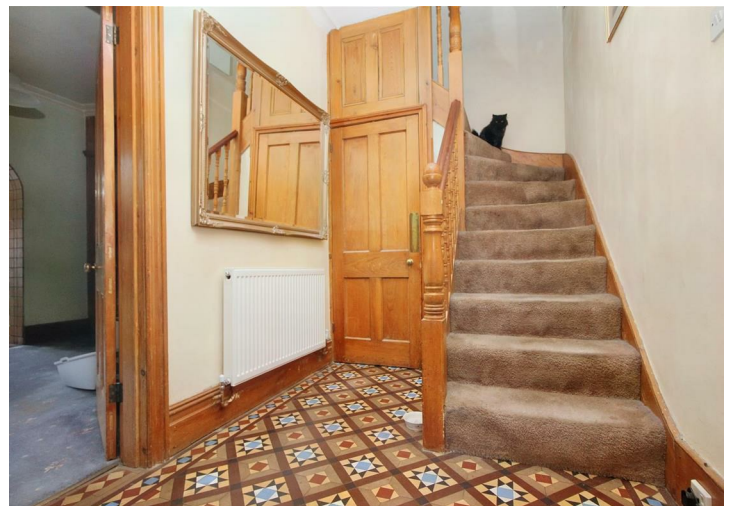
Located on a quiet road off of the notorious Barnet Lane this Victorian 3 BEDROOM semi detached house is just a minutes stroll to Elstree's village shops and places of worship and approximately 1.3 miles to Elstree and Borehamwood's mainline station and the array of shops and restaurants that Borehamwood has to offer. The property boasts a wealth of flexible living accommodation and the ground floor comprises of formal lounge, dining room, kitchen and entrance hall. The first floor offers three good size bedrooms and a family bathroom. Further benefits include a good size west facing rear garden with a stunning out building perfect for a home office or gym amongst other uses. The property has side access and on street parking.

020 3764 2222
www.village-estates.co.uk

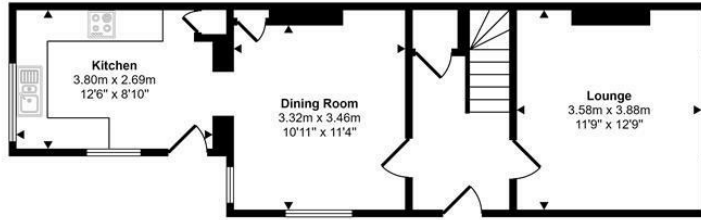
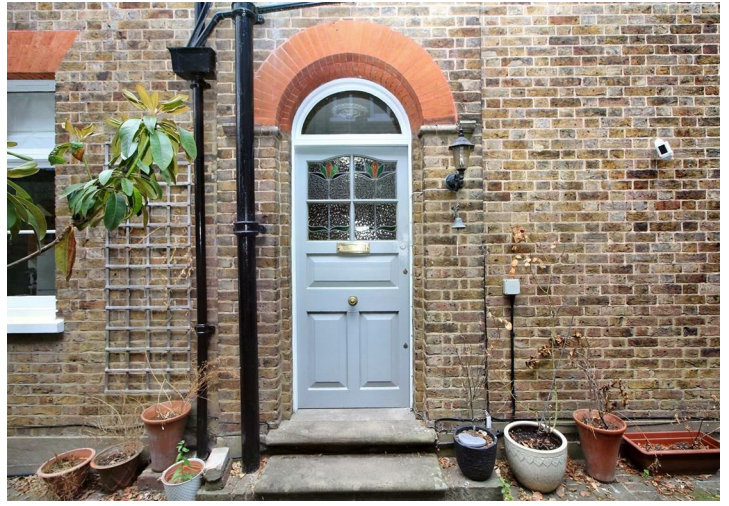


Village Estates
The Corner Shop High Street, Elstree
Herts WD6 3BY

Important Note: These particulars do not form part of any contract. All measurements are approximate and should not be relied upon. All prices quoted are strictly subject to contract.



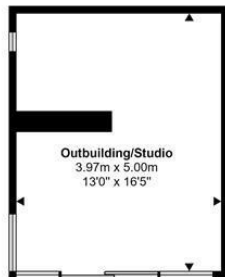




Ground Floor

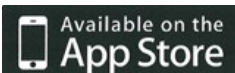


First Floor



Outbuilding/Studio

This floorplan is only for illustrative purposes and is not to scale. Measurements of rooms, doors, windows, and any items are approximate and no responsibility is taken for any error, omission or mis-statement. Icons of items such as bathroom suites are representations only and may not look like the real items. Made with Made Snappy 360.



Energy Efficiency Rating		Current	Potential
Very energy efficient - lower running costs			
(92 plus) A			
(81-91) B			
(69-80) C			
(55-68) D			
(39-54) E			
(21-38) F			
(1-20) G			
Not energy efficient - higher running costs			
England & Wales		EU Directive 2002/91/EC	