



HEADINGTON OX3
£3,000 PER MONTH AVAILABLE NOW

Hamptons
THE HOME EXPERTS

{ THE PARTICULARS

Headington OX3

£3,000 Per Month
Furnished

 4 Bedrooms
 4 Bathrooms
 2 Receptions

Features

- Four Bedrooms, - Four bathrooms (three ensuite), - Kitchen/ Breakfast Room, - Garden Room, - Utility Room, - Available for long term let

Council Tax

Council tax band not specified

Hamptons
257 Banbury Road
Summertown, Oxford, OX2 7HN
01865 578 501
oxfordlettings@hamptons.co.uk
www.hamptons.co.uk

{ THE SHARK HOUSE - AVAILABLE FOR LONG TERM LET

The Property

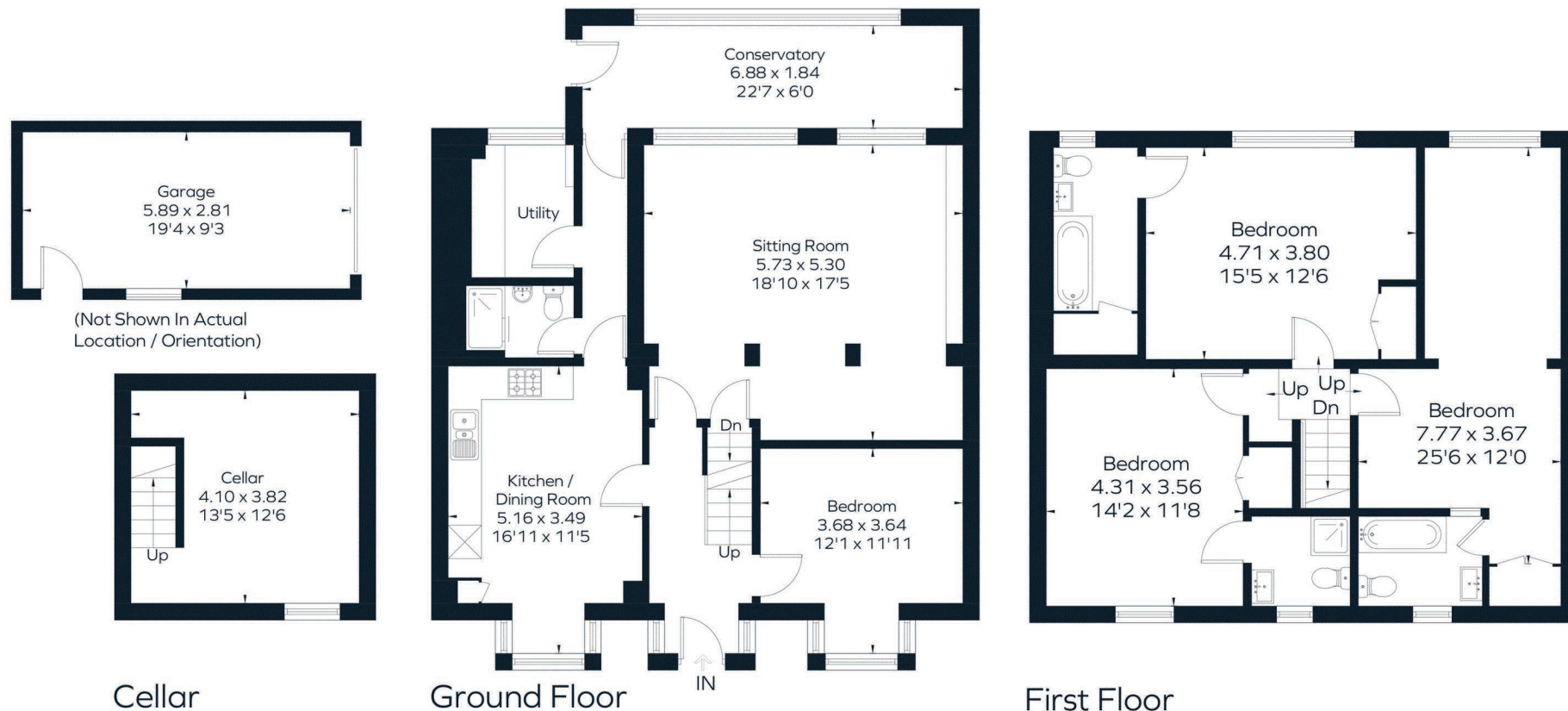
Synonymous with the Oxford skyline, The Shark House is available for long term let. With accommodation across two floors, this property offers over 1700 sq ft of internal living space. The ground floor comprises a kitchen/ breakfast room, spacious reception room, garden room, shower room, bedroom and utility room. To the second floor are three bedrooms each with ensuite bathrooms and built in wardrobes. The property is offered to market on a fully furnished basis. Please call to inquire as to availability and pricing.

Location

Situated in a prime central Headington location, this property is exceptionally well-positioned for easy access to the Headington hospitals, Oxford Brookes University, the main Headington schools, and the bus stops to London and the airport. Headington offers various amenities including shops, cafes, restaurants, and a Waitrose supermarket.



Approximate Floor Area = 169.1 sq m / 1820 sq ft
 Cellar = 15.7 sq m / 169 sq ft
 Garage = 16.5 sq m / 178 sq ft
 Total = 201.3 sq m / 2167 sq ft



This floor plan has been drawn in accordance with RICS Property Measurement 2nd edition.
 All measurements, including the floor area, are approximate and for illustrative purposes only. @fourwalls-group.com #82633

For Clarification

We wish to inform prospective tenants that we have prepared these particulars as a general guide and they have been confirmed as accurate by the landlord. We have not verified permissions, nor carried out a survey, tested the services, appliances and specific fittings. Room sizes are approximate and measurement figures rounded: they are taken between internal wall surfaces and therefore include cupboards/shelves, etc. Accordingly, they should not be relied upon for

carpets and furnishings. It should also be noted that all fixtures and fittings, carpeted, curtains/blinds, kitchen equipment and garden statuary, whether fitted or not, are deemed removable by the landlord unless specifically itemised with these particulars. Please enquire in office or on our website for details on holding deposit and tenancy deposit figures.

