



{ ASTON STREET OXFORD OX4
£5,000 PER MONTH AVAILABLE 11/08/2025

Hamptons
THE HOME EXPERTS

{ THE PARTICULARS

Aston Street Oxford OX4

£5,000 Per Month
Furnished

 5 Bedrooms
 2 Bathrooms

Features

- Five Double bedrooms, - Two bathrooms,
- Rear garden, - Open Plan Kitchen Diner, -
Fortnightly Clean (Included), - Seasonal
Gardening (Included)

Council Tax

Council Tax Band E

Hamptons
257 Banbury Road
Summertown, Oxford, OX2 7HN
01865 578 501
oxfordlettings@hamptons.co.uk
www.hamptons.co.uk

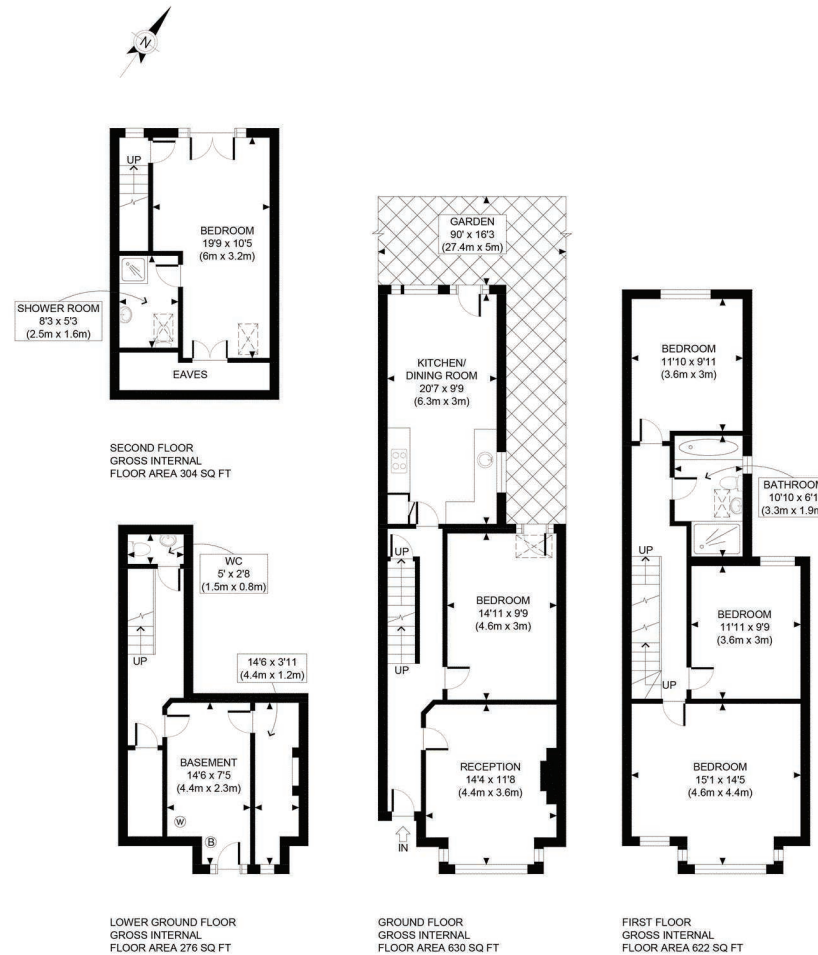
The Property

STUDENT HMO PROPERTY 2025/2026 ACADEMIC YEAR. Hamptons are pleased to present this spacious five bedroom terraced house finished to a high standard in the popular district of Oxford. The property benefits from a good sized kitchen dining room that leads out to a patio and garden area. Less than a mile from the popular Cowley Road which has various local amenities and popular eateries. This is a brilliant property for professional/student sharers. The rent includes a seasonal gardening and fortnightly clean.

Outside

East of the City Centre, Aston Street is conveniently close to both the High Street and the Magdalen Bridge. Within a short stroll from the property are stores, pubs, eateries, the neighborhood movie theater, and a bus station on St. Clements Street that provides frequent service to London and the City Centre.





APPROX. GROSS INTERNAL FLOOR AREA WITH EAVES 1832 SQ FT / 170 SQM
 APPROX. GROSS INTERNAL FLOOR AREA WITHOUT EAVES 1788 SQ FT / 166 SQM
 Ref: Copyright **photo**plan
 Disclaimer: Floor plan measurements are approximate and are for illustrative purposes only.
 While we do not doubt the floor plan accuracy and completeness, you or your advisors should conduct a careful, independent investigation of the property in respect of monetary valuation

For Clarification

We wish to inform prospective tenants that we have prepared these particulars as a general guide and they have been confirmed as accurate by the landlord. We have not verified permissions, nor carried out a survey, tested the services, appliances and specific fittings. Room sizes are approximate and measurement figures rounded: they are taken between internal wall surfaces and therefore include cupboards/shelves, etc. Accordingly, they should not be relied upon for

carpets and furnishings. It should also be noted that all fixtures and fittings, carpeted, curtains/blinds, kitchen equipment and garden statuary, whether fitted or not, are deemed removable by the landlord unless specifically itemised with these particulars. Please enquire in office or on our website for details on holding deposit and tenancy deposit figures.

