




{ MARSTON STREET OXFORD OX4  
£5,000 PER MONTH AVAILABLE 14/07/2025

**Hamptons**  
THE HOME EXPERTS

# { THE PARTICULARS

Marston Street Oxford OX4

£5,000 Per Month  
Furnished

 6 Bedrooms  
 2 Bathrooms  
 1 Reception

## Features

- Six Double Bedrooms, - Open Plan  
Kitchen Diner, - Large Living Room, - Fully  
Furnished, - Fortnightly Clean of  
Communal Areas, - Walking Distance To  
Oxford City Centre, - Rear Garden

## Council Tax

Council Tax Band E

Hamptons  
257 Banbury Road  
Summertown, Oxford, OX2 7HN  
01865 578 501  
[oxfordlettings@hamptons.co.uk](mailto:oxfordlettings@hamptons.co.uk)  
[www.hamptons.co.uk](http://www.hamptons.co.uk)

# { A SIX BEDROOM HMO PROPERTY IN THE HEART OF EAST OXFORD

## The Property

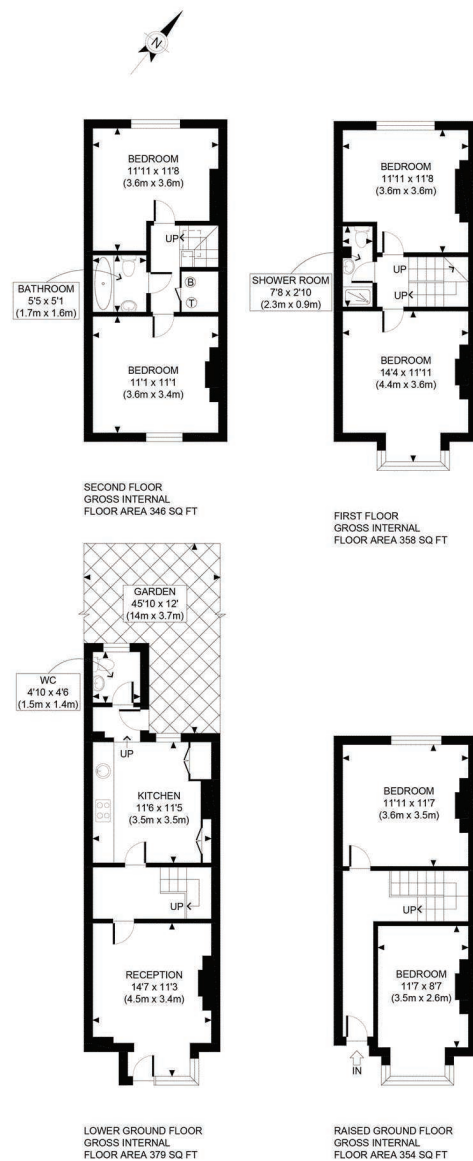
STUDENT HMO PROPERTY 2025/2026 ACADEMIC YEAR. Hampton's are pleased to present this spacious six bedroom terraced house finished to a high standard in the popular district of Oxford. The property benefits from good sized living room and dining room with the kitchen area leading out to a patio and garden area. Just a short walk away from the popular Cowley Road and close to various local amenities and popular eateries this is a brilliant property for professional/student sharers. The rent includes a seasonal gardener and cleaning of communal areas.

## Outside

East of the City Centre, Marston Street is conveniently close to both the High Street and the Magdalen Bridge. Within a short stroll from the property are stores, pubs, eateries, the neighborhood movie theater, and a bus station on St. Clements Street that provides frequent service to London and the City Centre.



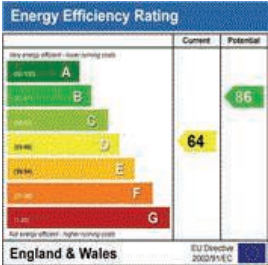




### For Clarification

We wish to inform prospective tenants that we have prepared these particulars as a general guide and they have been confirmed as accurate by the landlord. We have not verified permissions, nor carried out a survey, tested the services, appliances and specific fittings. Room sizes are approximate and measurement figures rounded: they are taken between internal wall surfaces and therefore include cupboards/shelves, etc. Accordingly, they should not be relied upon for

carpets and furnishings. It should also be noted that all fixtures and fittings, carpeted, curtains/blinds, kitchen equipment and garden statuary, whether fitted or not, are deemed removable by the landlord unless specifically itemised with these particulars. Please enquire in office or on our website for details on holding deposit and tenancy deposit figures.





Awaiting Photograph

Awaiting Photograph