



{ HAREFIELDS OXFORD OX2
£3,500 PER MONTH AVAILABLE 15/04/2024

Hamptons

THE HOME EXPERTS

{ THE PARTICULARS

Harefields Oxford OX2

£3,500 Per Month
Part-furnished

 **5 Bedrooms**
 **3 Bathrooms**
 **2 Receptions**

Features

- 5 bedrooms, - 3 bathrooms, - 1 reception rooms, - Part furnished, - Ideal for a family, - Patio garden, - Available now, - Council Tax Band D

Council Tax

Council Tax Band D

Hamptons

257 Banbury Road
Summertown, Oxford, OX2 7HN
01865 578 501
oxfordlettings@hamptons.co.uk
www.hamptons.co.uk

{ A FOUR BEDROOM FAMILY HOME IN OXFORD

The Property

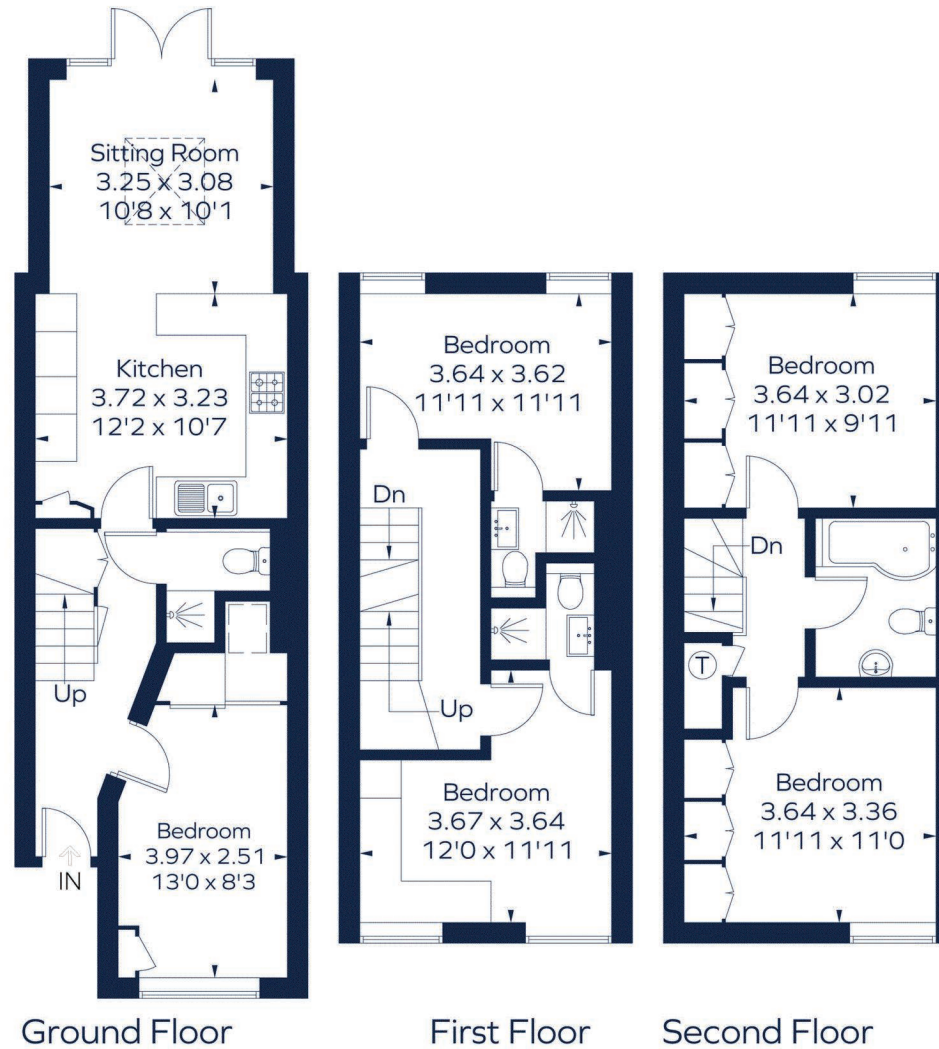
A recently renovated five bedroom house, offering flexible accommodation across three floors, best suited to a family. The property offers off street parking for 1 car and a easy to manage patio garden. Located in Cutteslowe, North Oxford, this property is available now for long term let, on a part furnished basis.

Location

Harefield is conveniently situated, for access into Oxford and Kidlington, close by road links such as the A34 and A40, and nearby rail links at Oxford Parkway offering frequent and fast train services to London Marylebone.



Approximate Area = 110.9 sq m / 1194 sq ft
Including Limited Use Area (1.3 sq m / 14 sq ft)



Surveyed and drawn in accordance with the International Property Measurement Standards (IPMS 2: Residential)
fourwalls-group.com 270271

For Clarification

We wish to inform prospective tenants that we have prepared these particulars as a general guide and they have been confirmed as accurate by the landlord. We have not verified permissions, nor carried out a survey, tested the services, appliances and specific fittings. Room sizes are approximate and measurement figures rounded: they are taken between internal wall surfaces and therefore include cupboards/shelves, etc. Accordingly, they should not be relied upon for

carpets and furnishings. It should also be noted that all fixtures and fittings, carpeted, curtains/blinds, kitchen equipment and garden statuary, whether fitted or not, are deemed removable by the landlord unless specifically itemised with these particulars. Please enquire in office or on our website for details on holding deposit and tenancy deposit figures.

