



Guide price £530,000

TENURE : FREEHOLD

Wintour Drive, Lydney, Gloucestershire, GL15 5FA

Bedrooms : 4

Bathrooms : 2

Reception Rooms : 2

**Redrow Heritage Home –
blending timeless design
with luxury finishes**

**Inviting lounge with feature
fireplace and garden-facing
patio doors**

**Spacious reception hallway
with tiled flooring**

Four generous bedrooms

**Upgraded open-plan
kitchen/diner with bespoke
island**

**including a luxurious master
suite with en-suite**

Step into timeless elegance with this stunning Canterbury Plus, Redrow Heritage Home, where classic style meets high-end contemporary living. From the beautiful reception hallway to the showstopping open-plan kitchen and dining area, every inch of this home has been thoughtfully designed with premium finishes, integrated Smeg appliances, and bespoke touches throughout. Offering four spacious bedrooms, including a luxurious master bedroom with delightful en-suite, and beautifully landscaped gardens with multiple seating areas, a greenhouse, and veranda, this home delivers refined comfort inside and out. Complete with a versatile study, stylish lounge, upgraded utility, and an exceptional garage with EV charger, this is a rare opportunity to own a truly luxurious family residence.

Reception Hallway

A composite heritage entrance door with inset obscure glazing and side window welcomes you into the exceptionally spacious hallway – the perfect introduction for guests. Featuring elegant ceramic tiled flooring throughout and an open carpeted stairwell leading to the first floor. The space is enhanced by a central light feature, wall-mounted heating controls, radiator, and conveniently placed power points.

Study

A charming UPVC double-glazed window to the front floods this versatile room with natural light. Ideal as a home office or a downstairs bedroom, it offers central pendant lighting, plush carpeting, radiator, and multiple power points to suit your needs.

Downstairs Cloakroom

Brightened by an obscured UPVC double-glazed front window, this modern cloakroom boasts ceramic tiled flooring, a low-level push-button WC, and a wash basin with mixer tap set against a stylish tiled splashback. Additional features include central pendant lighting, radiator, and towel hooks for convenience.

Lounge

Light-filled and inviting, the lounge features UPVC double-glazed patio doors and floor-to-ceiling windows that overlook the garden, bringing the outdoors in. A feature fireplace with a wooden surround and marble hearth houses a contemporary electric flame-effect fire with inset spotlights. Plush carpeting covers the floor, complemented by central ceiling lighting, radiator, and multiple power points.

Kitchen / Diner

Truly the heart of the home, this upgraded, immaculate kitchen/dining space offers undeniable wow factor – ideal for entertaining and family gatherings. Large patio doors and windows fill the room with light, while the kitchen itself impresses with a comprehensive range of base and eye-level units topped with durable composite work surfaces and matching upstands. Integrated appliances include a five-ring Smeg gas hob with a chimney extractor, double electric oven, fridge/freezer, and washing machine. A 1.5 bowl stainless steel sink with mixer tap, pantry-style cabinets, and a bespoke kitchen island add both style and functionality. Ceramic tiled flooring, spot lighting, abundant power points, and a radiator complete this superb space.

Dining Space

Perfectly sized for a large dining table, this area benefits from spot lighting, ample power points, and a radiator. Double doors open into the lounge, and a handy understairs storage cupboard with shelving, power points, and a fibre internet connection keeps clutter at bay.

Utility Room

Accessed via a composite door with inset obscured glazing, the utility offers practical storage with fitted cupboards, work surfaces, and matching upstands. There's space for a washing machine and tumble dryer, along with plenty of shelving to keep things organized. Central lighting, loft access, ceramic tiled flooring, radiator, multiple power points, and wall-mounted heating controls ensure convenience.

First Floor Landing

Carpeted for comfort, the landing provides access to all rooms, loft access, pendant lighting, power points, and a fitted storage cupboard.

Aroha Properties

Unit 1 Regents Walk, Newerne Street, Lydney, Gloucestershire, GL155RF

sales@arohaproperties.co.uk | 01594368200

Website: <https://aroha.globalnoticeboard.com>



Master Bedroom

A spacious, bright retreat featuring a striking UPVC bay window. Central pendant lighting and plush carpeting create a cozy ambiance. Triple fitted wardrobes with modern wood-effect sliding doors offer abundant hanging space and shelving. The room includes ample power points and a radiator.

En-Suite

This luxurious en-suite features an obscured UPVC double-glazed window to the front. Sleek tiling and spot lighting set the tone for relaxation. The white suite includes a low-level push-button WC, wash basin with mixer tap, a spacious step-in shower with glazed door and chrome frame, and a powerful shower with attachments. Additional touches include an extractor fan, stainless steel heated towel rail, mirrored vanity units, shaving point, and chrome accessories.

Bedroom 2

Bright and generously proportioned, this bedroom has a UPVC double-glazed window to the front and plush carpeting throughout. Triple fitted wardrobes with modern white sliding doors provide excellent storage with hanging rails and shelving. Central pendant lighting, power points, and radiator complete the room.

Bedroom 3

Offering beautiful far-reaching views towards open fields and the Severn Estuary, this versatile bedroom has a UPVC double-glazed rear window, plush carpet, and central pendant lighting. Large mirrored sliding doors open to a spacious double wardrobe with hanging rails and shelving, alongside power points and a radiator. Currently used as a crafting and hobby room, it offers flexible living space.

Bedroom 4

With a UPVC double-glazed window overlooking the rear and elevated views, this bedroom includes pendant lighting and a bespoke fitted airing cupboard with abundant shelving and storage. Plush carpeting, radiator, and power points complete the room.

Family Bathroom

The luxurious family bathroom features an obscured UPVC double-glazed window to the rear and a spa-like ambiance with feature tiled splashbacks and matching flooring. The white suite includes a low-level push-button WC, wash basin with mixer tap, panel bath with mixer tap and glazed shower screen, plus a power shower with attachments. Spot lighting, extractor fan, chrome heated towel rail, and shaving point add finishing touches.

Garage

Exceptionally spacious, the garage offers numerous possibilities. Equipped with an electric garage door and EV charger, bespoke flooring, and an extensive range of fitted shelving, it provides excellent storage and organization. Lighting, power points, a wall-mounted gas central heating boiler, and a composite door with obscured glazing leading to the side of the property complete this versatile space.

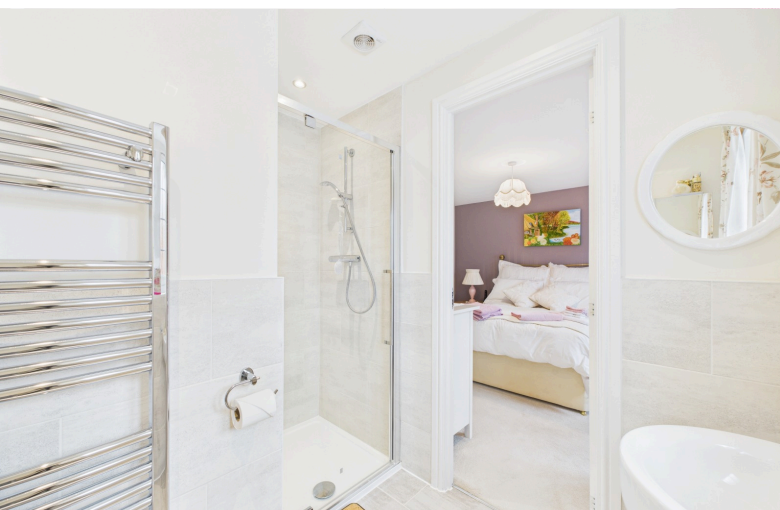
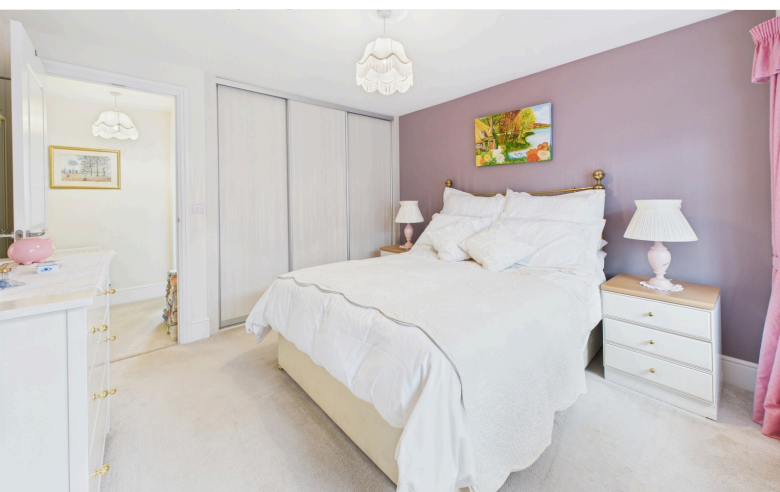
Garden

To the side, a delightful bespoke decking area has been thoughtfully created by the current owners, offering a usable, all-year-round outdoor space – perfect for drying laundry or relaxing. The pergola-style cover with clear sheeting allows natural light in while sheltering from the rain. A secure fenced boundary surrounds the garden, with access to a large wooden storage shed, outside water supply, and gated access to the rear garden.

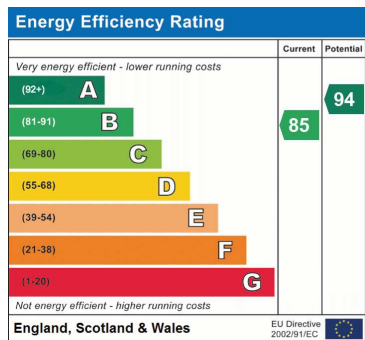
The rear garden is breathtaking and lovingly maintained and landscaped by the current owners. Boasting immaculate lawns and a fabulous bespoke veranda providing the perfect place to sit and enjoy the beautiful gardens in all weathers. Having an ornate greenhouse perfect for green fingers and raised vegetable plots. The charming garden is secured by mature hedging and fenced boundaries and provides a sanctuary for relaxing or entertaining. Having three paved seating areas and an abundance of fruit trees and flowering borders. Having outdoor lighting and power with gated side access.











Address: 11 Wintour Drive, GL15

Aroha Properties

Unit 1 Regents Walk, Newerne Street, Lydney, Gloucestershire, GL155RF

sales@arohaproperties.co.uk | 01594368200

Website: <https://aroha.globalnoticeboard.com>

