 **5**
Bedrooms

 **3**
Bathrooms



Tucked away in an idyllic rural setting, this enchanting character cottage is a rare gem. Beautifully nestled within approximately 2.5 acres of sweeping countryside. Impeccably upgraded and thoughtfully extended by the current owners, the property seamlessly blends period charm with contemporary comfort, offering exceptionally versatile living spaces throughout.

With breathtaking, unspoilt views stretching across the rolling hills, every window frames a postcard-worthy scene. Whether you're relaxing in the light-filled living areas, entertaining in the expansive gardens, or exploring the surrounding landscape, this home delivers tranquillity and timeless elegance in equal measure.

Set in a highly desirable village renowned for its community spirit and picturesque surroundings, this home is the epitome of rural sophistication perfect for those seeking a peaceful lifestyle. This rural sanctuary is remarkably well connected, with excellent commuter links to both Chepstow and Bristol.

Stepping inside, you're immediately greeted by a warm, inviting atmosphere where character features and modern finishes sit in perfect harmony. Exposed beams, original fireplaces, and carefully chosen materials whisper tales of the home's heritage, while elegant upgrades ensure that contemporary living is rendered with effortless grace.

The ground floor unfolds as a symphony of sophistication and thoughtful design. At its heart lies an expansive open-plan kitchen, dining, and family room that serves as the luminous focal point of the residence. The bespoke kitchen, with its refined detailing and premium finishes, is both a culinary haven and a showcase of style. A striking feature fireplace with a wood-burning stove provides an intimate warmth, while the full-width bifold doors invite the outdoors in by revealing an enchanting courtyard—ideal for family gatherings.

Beyond this, a meticulously designed utility room creates a seamless connection to the lush garden. Bifold doors lead to a private seating nook, perfect for enjoying a serene morning coffee or an afternoon read amidst nature. A charming traditional pantry, alongside a dedicated wine room and a contemporary shower room, further accentuate the home's blend of practical luxury and artful design.

The ground floor also offers a formal lounge/snug, exuding a rich, cosy ambience enhanced by another wood-burning stove—an idyllic retreat on cooler evenings. Complementing this space is a versatile room that currently functions as a playroom or home office, alongside a bespoke gym space, ensuring that every facet of modern living is catered for with style.

Crowning these exquisite spaces is the exceptional orangery. A truly enchanting glass retreat which graces the front of the property. Flooded with natural light and framed by sweeping vistas of the surrounding countryside, it elegantly blurs the boundaries between the indoors and the tranquil beauty of the outdoors, offering an everlasting retreat of peace and inspiration.

Upstairs, the charm continues. Ascending to the first floor, you are greeted by an exquisite, bespoke, glazed atrium that frames a delightful magnolia tree against the serene views beyond. This luminous landing sets a tone of refined elegance for the entire upper level.

The first floor presents five beautifully appointed double bedrooms, each offering exceptional views of the surrounding landscape.

The master suite is a true masterpiece, with bespoke bifold doors leading to a Juliet balcony that captures breathtaking, far-reaching vistas. Four further double bedrooms continue the theme of grace, with two of these generously sized havens featuring dedicated dressing/ study areas and custom fitted wardrobes that embody both luxury and practicality.

Completing this level is a spacious, light-filled family bathroom, where a rolled-top bath invites tranquil indulgence and a separate shower provides a touch of contemporary elegance. Every detail has been curated to enhance comfort and style, creating a sanctuary that is as inviting as it is visually stunning.

Every inch of this home has been considered and crafted with care, making it not just a place to live—but a place to truly belong.

Set within approximately 2.5 acres, the gardens surrounding this remarkable home offer a truly idyllic escape into **countryside** living. Manicured lawns sweep around the home, framed by mature trees, vibrant seasonal blooms, and thoughtfully curated planting that brings colour and texture throughout the year.

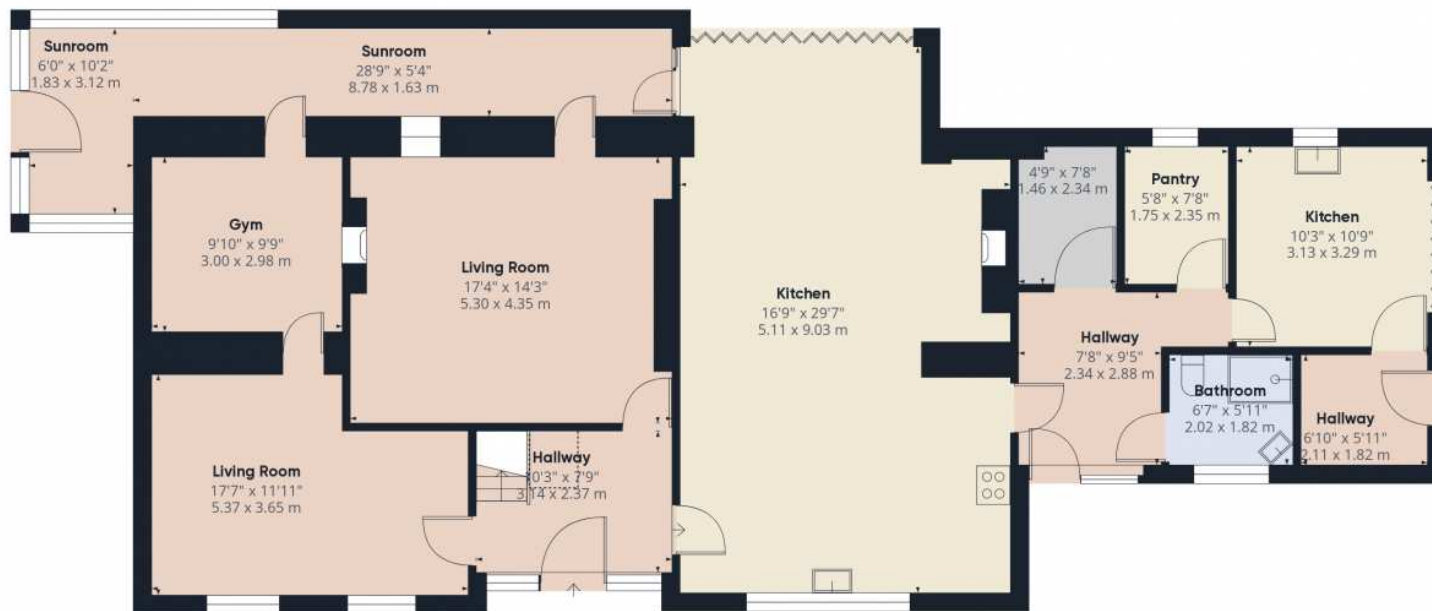
A long, sweeping driveway winds gracefully through the grounds, leading to a generous parking area while offering a picturesque approach to the property. Nestled within the garden are a number of delightful features designed to enhance both lifestyle and leisure. A tennis court, a charming children's treehouse, and a series of beautifully arranged courtyard seating areas are perfect for entertaining or enjoying outdoor pursuits.

Discreetly positioned are a selection of practical outbuildings and storage spaces, all of which offer potential for conversion into stylish home offices, studios, or serene summer houses.

Beyond the formal gardens lies an adjoining one-acre paddock which is on a separate title, with its own vehicular access—offering superb versatility for equestrian activities, a smallholding, or simply additional space to enjoy the rural surroundings.

Agents Note: Planning approved for new timber framed and pitched cedar shingle roofed double car port with home office within eaves. P1138/21/FUL

Woolaston Common is a picturesque village nestled in the heart of the Gloucestershire countryside, offering a peaceful yet vibrant community atmosphere. Known for its natural beauty, the common provides ample green space for outdoor activities and is surrounded by scenic walks, making it a haven for nature lovers. The village boasts a welcoming, tight-knit community, where local events and a strong sense of neighbourly spirit create an inviting place to call home. With its blend of tranquil rural living and close proximity to essential amenities, Woolaston Common is a truly special location for those seeking both serenity and a sense of belonging in a charming, historic setting.



Floor 0

Approximate total area⁽¹⁾

3002.81 ft²

278.97 m²

Reduced headroom

7.59 ft²

0.71 m²

(1) Excluding balconies and terraces

Reduced headroom

Below 5 ft/1.5 m

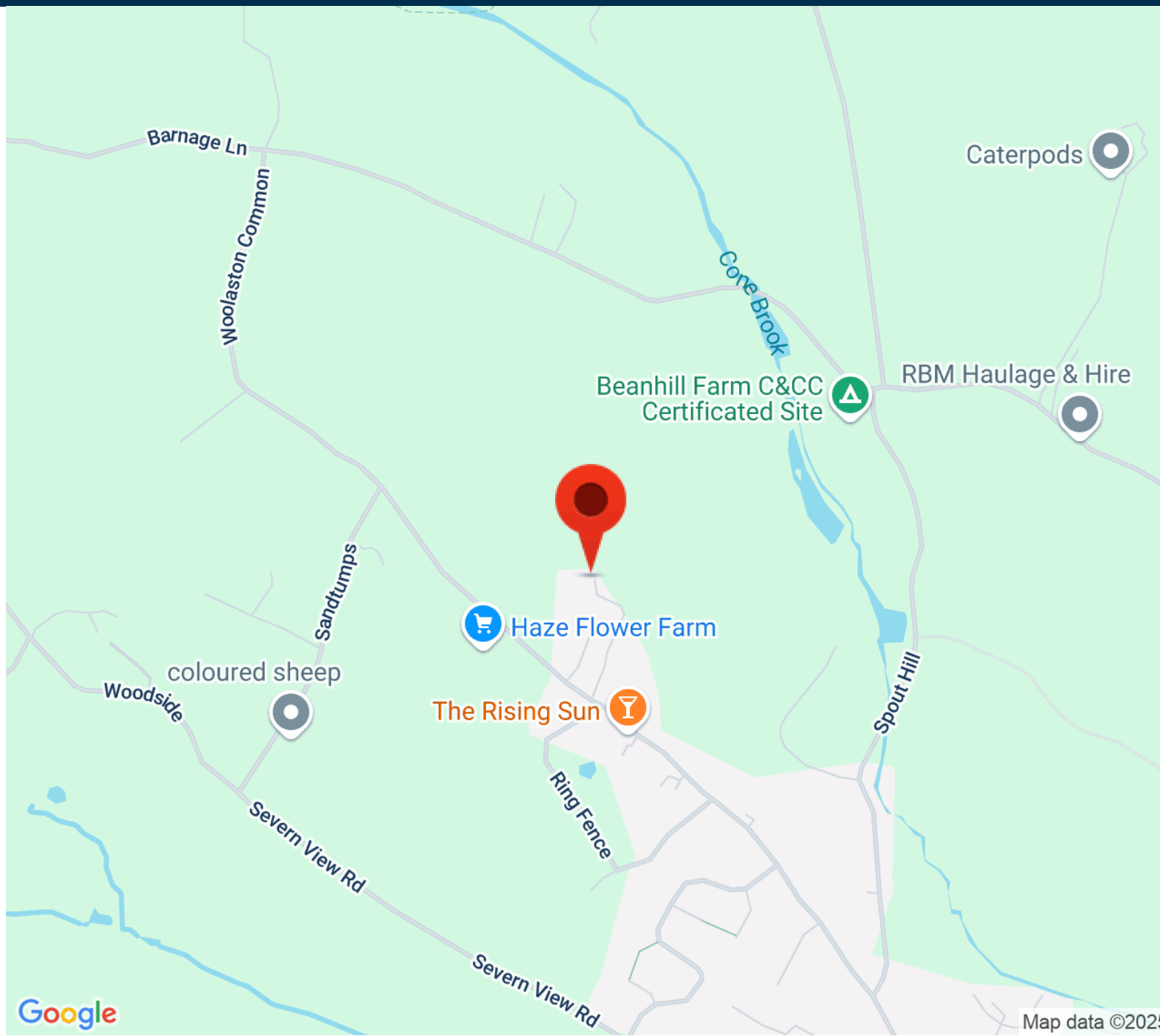
While every attempt has been made to ensure accuracy, all measurements are approximate, not to scale. This floor plan is for illustrative purposes only.

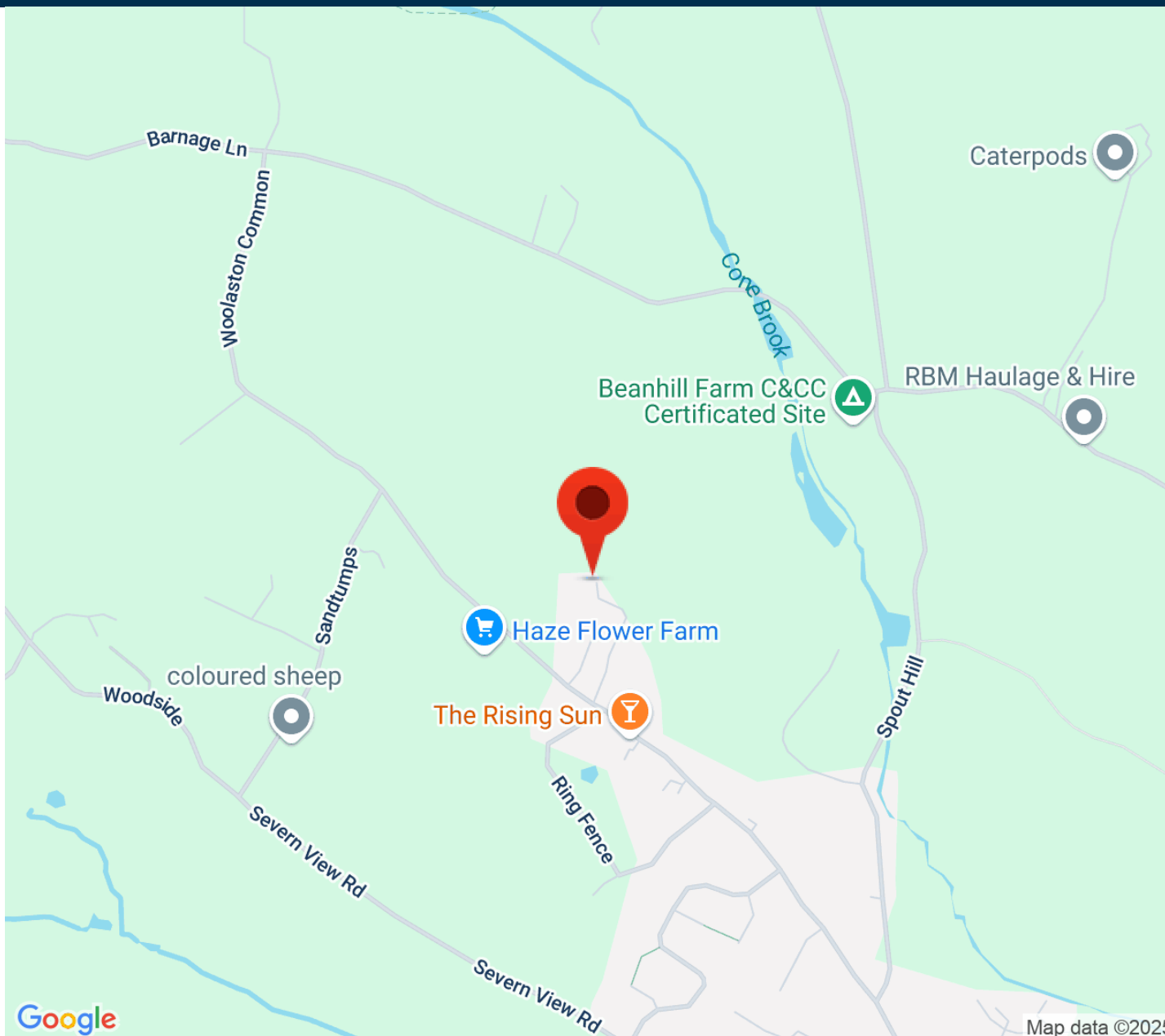
Calculations are based on RICS IPMS 3C standard.

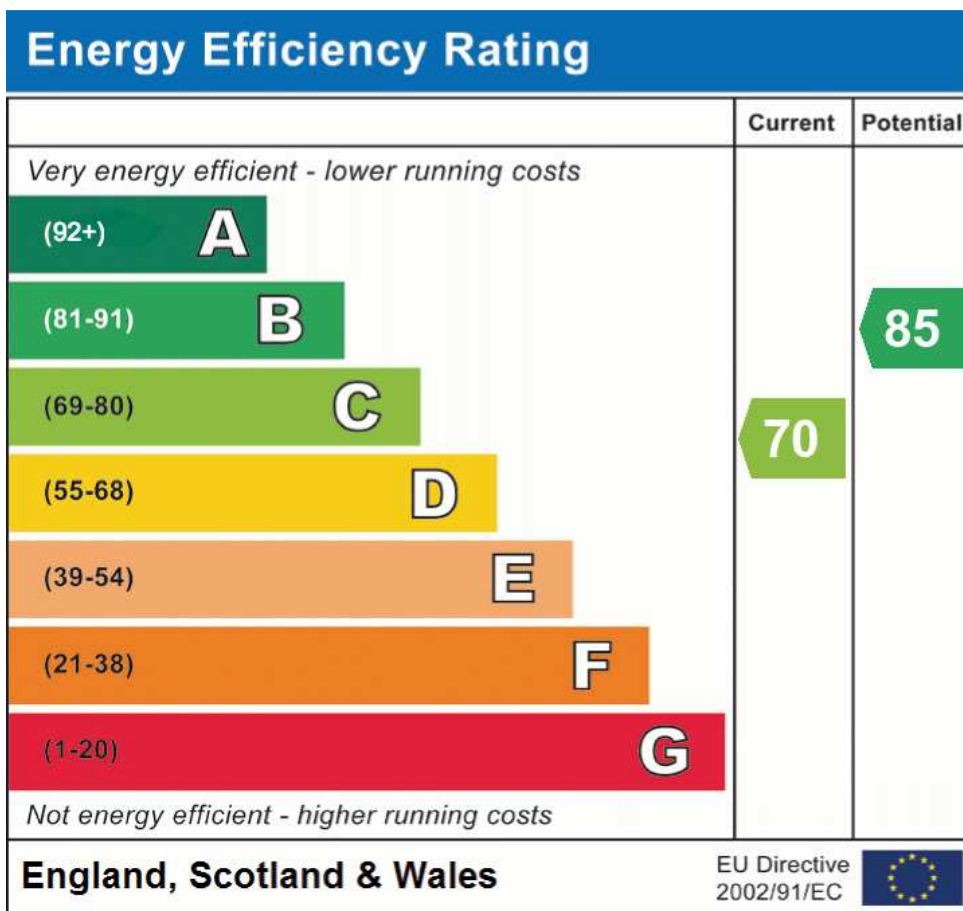
GIRAFFE 360



Floor 1







Please Scan the QR for more details.



Address: Brook Cottage, Woolaston Common, GL15 6NU