



Charles II Place London

£1,800 Per Week

A spacious three-bedroom townhouse, ideally located within a portered development on the highly sought-after Charles II Place in the heart of Chelsea.

Arranged over multiple floors, the property offers generous and flexible living accommodation throughout. The layout includes a bright reception room, a fully fitted kitchen, three well-proportioned bedrooms, two bathrooms, and an additional guest W/C, making the home particularly well suited to families or professional sharers.

A rare feature for this prime Chelsea location is the integral garage, providing secure off-street parking as well as valuable additional storage.

The townhouse is superbly positioned just moments from the King's Road, with its renowned selection of boutiques, cafés, and restaurants. Excellent transport links are also close at hand, including Sloane Square and South Kensington Underground stations.

Please note: the photographs shown are digitally staged for marketing purposes.

Council Tax Band: Kensington And Chelsea H

Minimum contract: 12 months

Change of contract fee: £50 including VAT

Lift access

Holding Deposit - £1800 (1 weeks rent, subject to agreed offer)

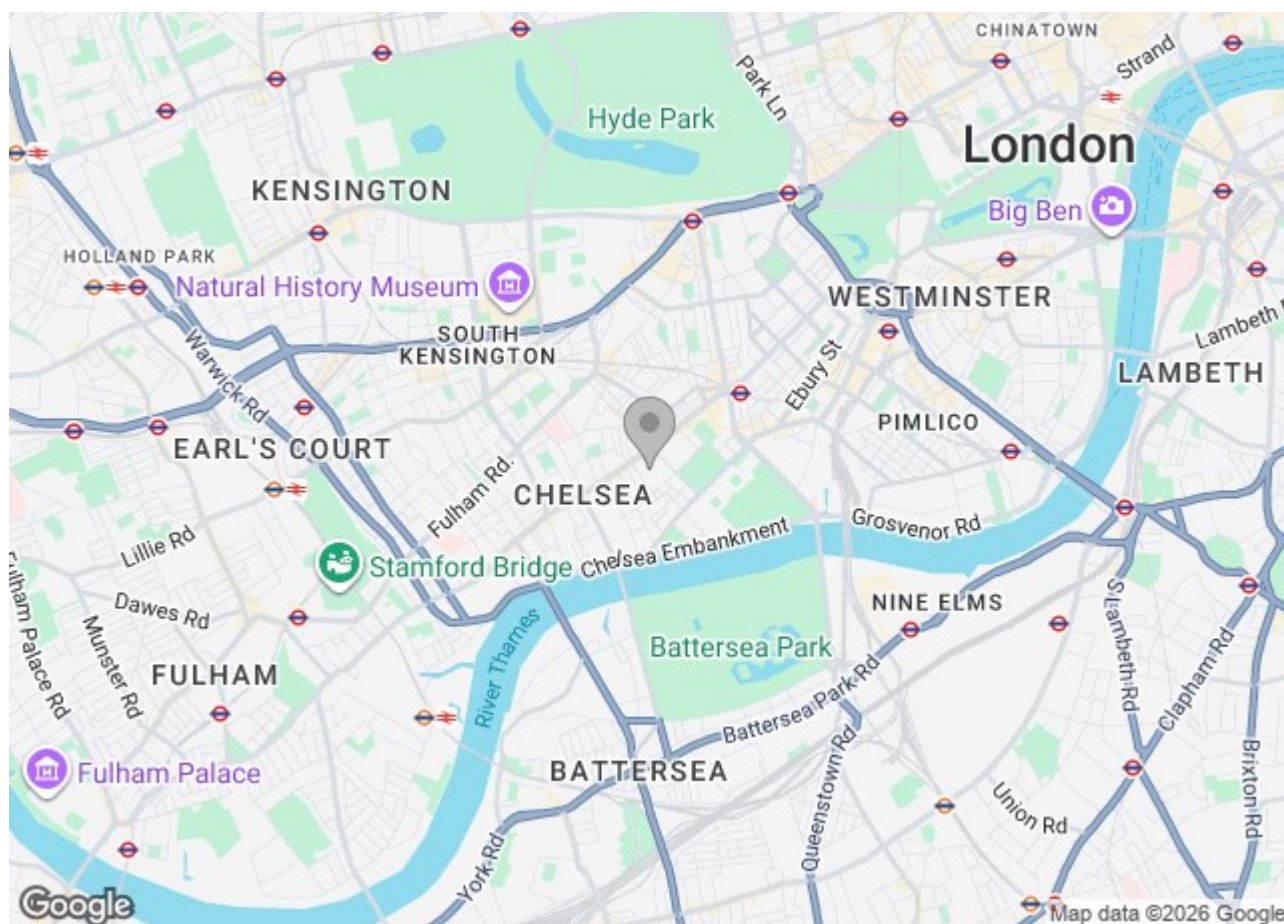
To check broadband and mobile phone coverage please visit Ofcom.

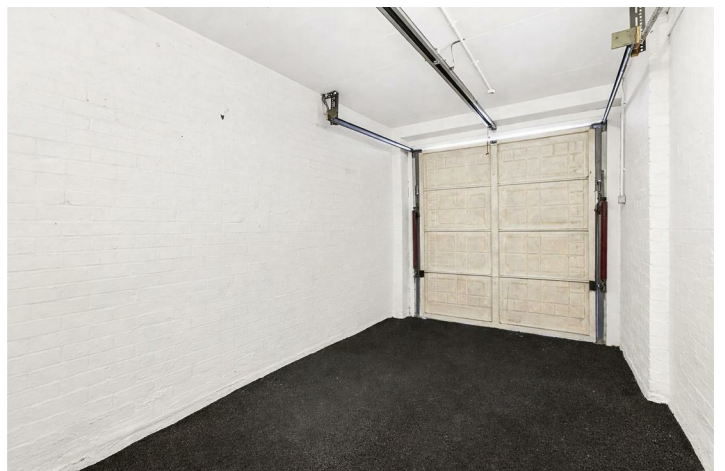
Please note: photographs shown are digitally staged for marketing purposes.

Charles II Place London

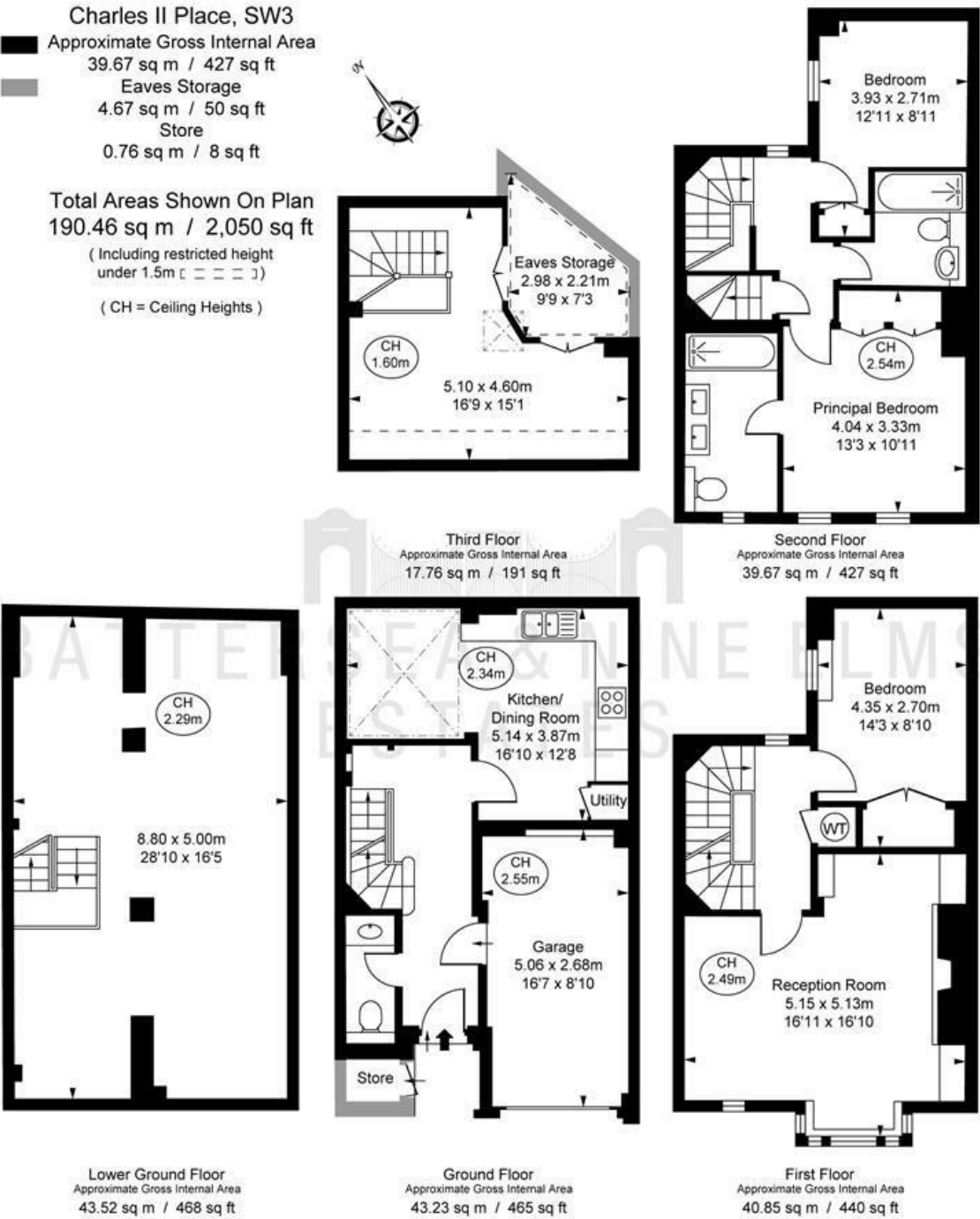


- Three bedroom townhouse
- Arranged over multiple floors
- Sloane Square underground
- Two bathrooms plus guest W/C
- Prime Chelsea (SW3) location
- Private garage
- Portered development





Floor Plan



This plan is not to scale. It is for guidance and not for valuation purposes.
All measurements and areas are approximate only, and have been prepared in accordance with the current edition of the RICS Code of Measuring Practice.
© Fulham Performance

These particulars, whilst believed to be accurate are set out as a general outline only for guidance and do not constitute any part of an offer or contract. Intending purchasers should not rely on them as statements of representation of fact, but must satisfy themselves by inspection or otherwise as to their accuracy. No person in this firm's employment has the authority to make or give any representation or warranty in respect of the property.

