



## Electric Boulevard London

**£1,000 Per Week**

Situated in a prime location, this one bedroom apartment is available to rent in the exclusive Battersea Power Station development. The property offers high specification design and finish, with wood flooring and floor to ceiling windows.

Situated in the heart of the iconic development, residents can take advantage of the selection of vibrant shops, restaurants and leisure spaces available to them. The River Thames, Chelsea, Battersea Park and zone 1 tube and rail stations are located close by.

Residents of Koa House also benefit from the residents' gym and lounge.

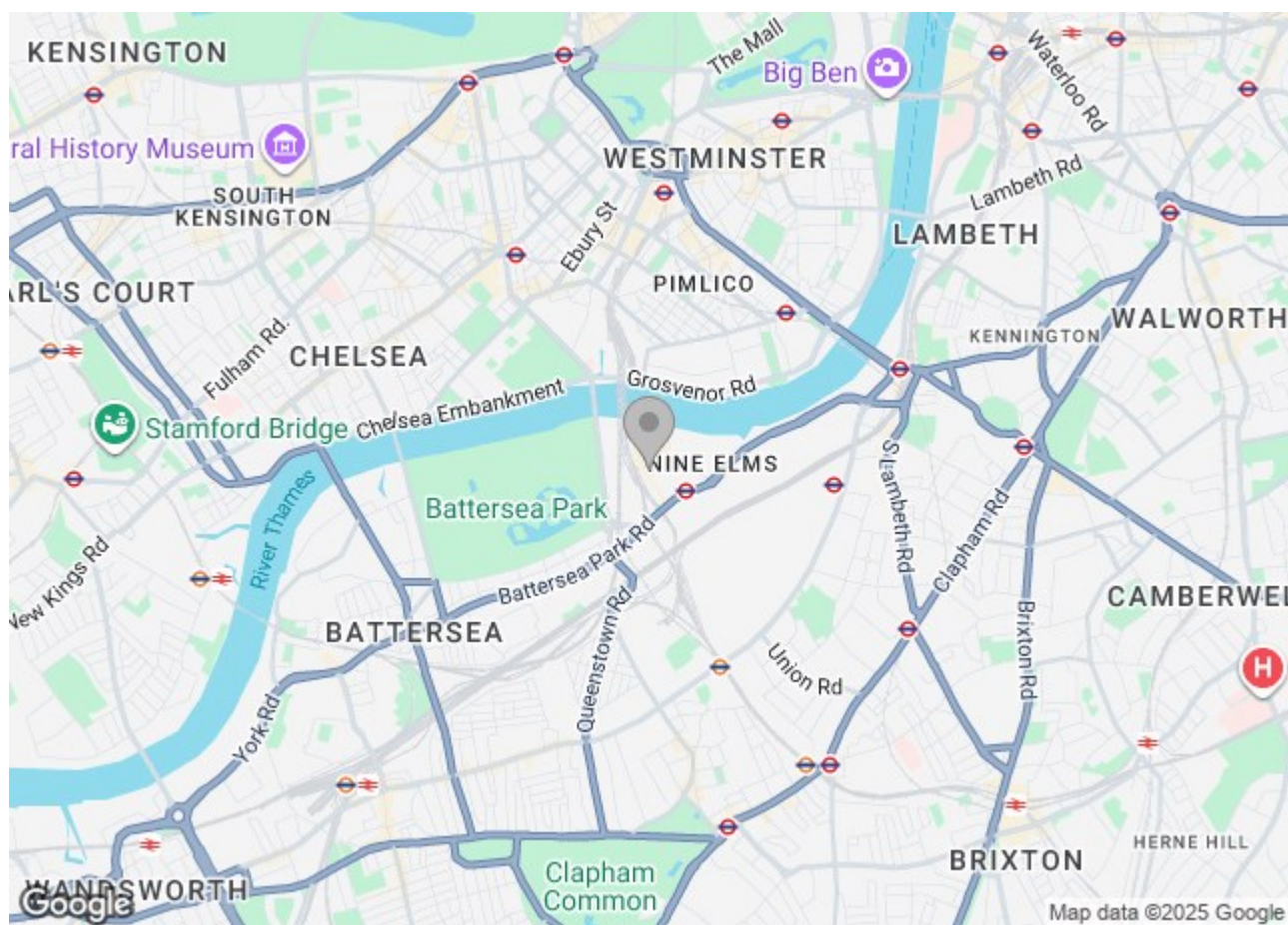
Minimum contract: 12 months  
Council tax band : Wandsworth - F  
Change of contract fee: £50 including VAT  
Lift access | Cladding: EWS1 Certificate available  
Holding Deposit - £1,000 (1 weeks rent, subject to agreed offer)

To check broadband and mobile phone coverage please visit Ofcom.  
To check planning permission please visit Wandsworth Council Website, Planning & Building Control

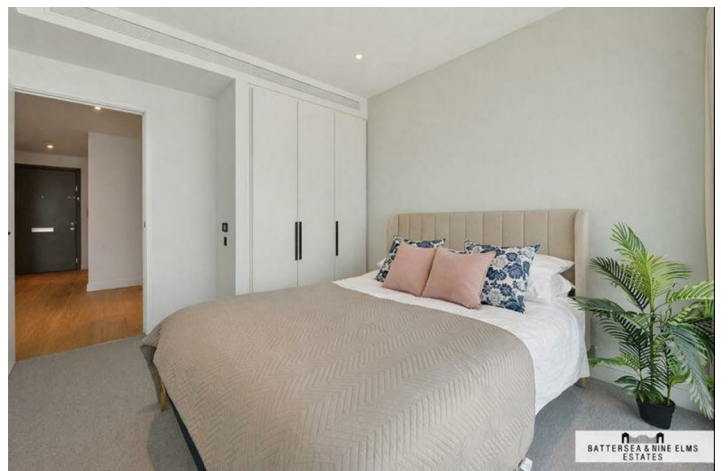
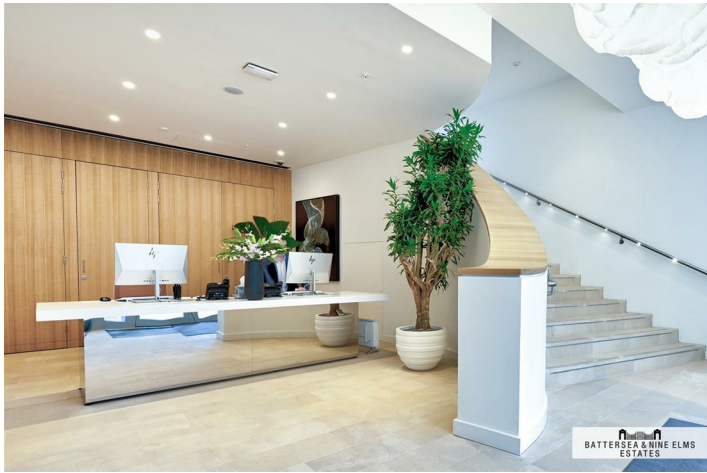
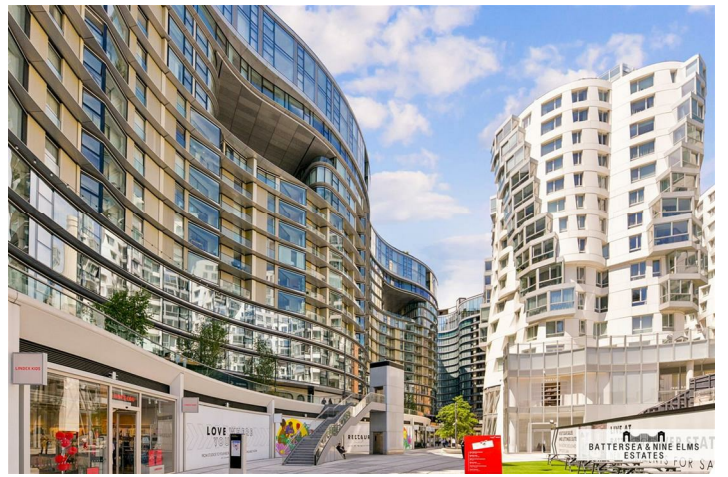
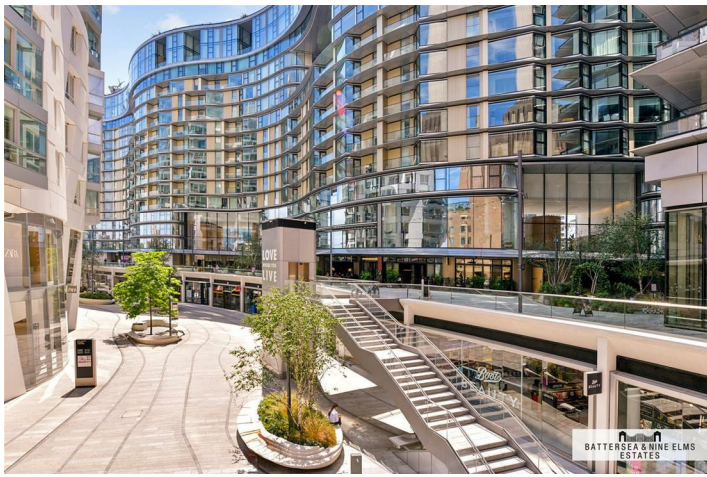
# Electric Boulevard London

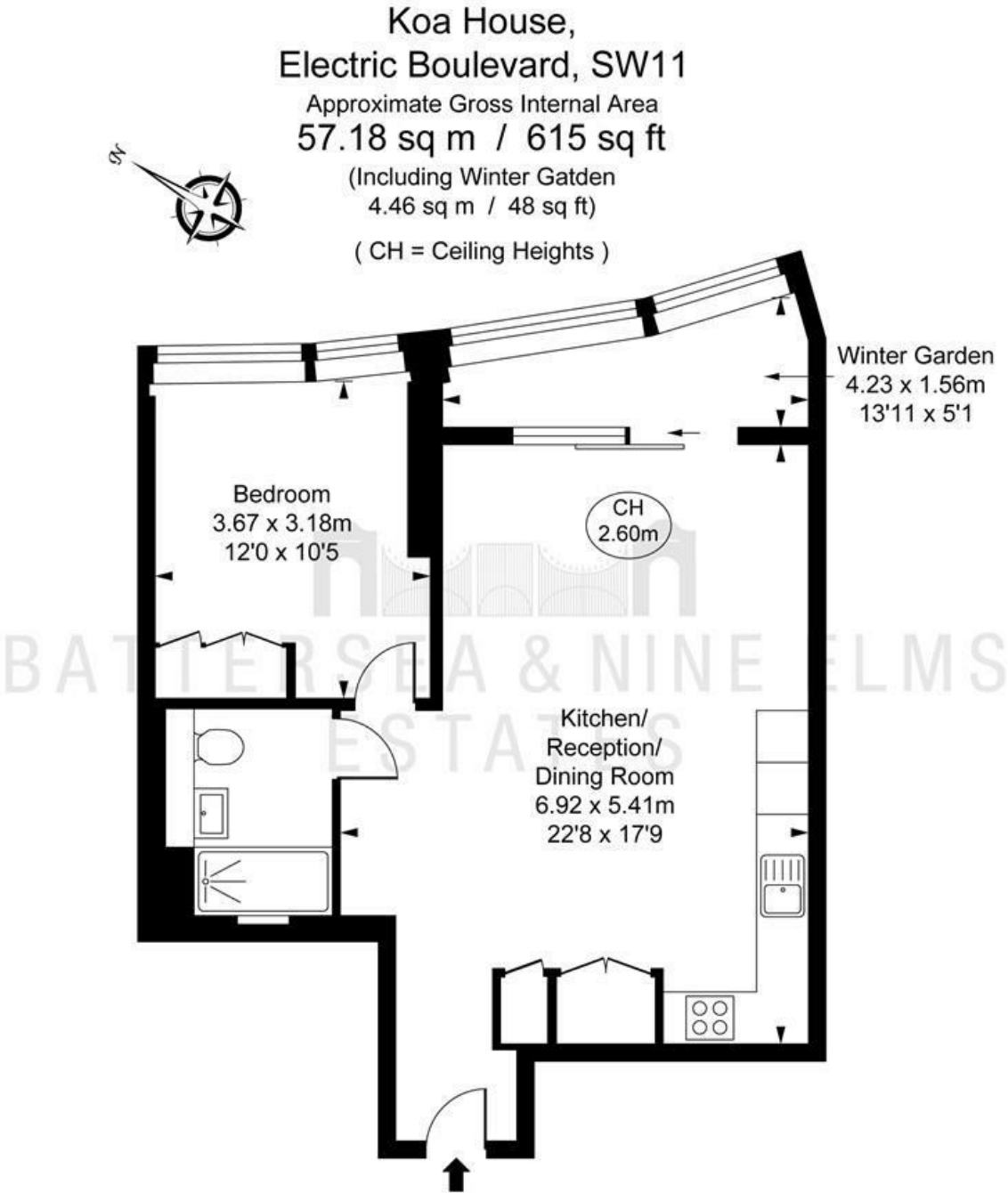


- 24 hour concierge
- Residents' gym
- Iconic development
- Residents' lounge
- One double bedroom
- \*Photos of a similar property\*









This plan is not to scale. It is for guidance and not for valuation purposes.  
All measurements and areas are approximate only, and have been prepared in accordance with the current edition of the RICS Code of Measuring Practice.  
© Fulham Performance

These particulars, whilst believed to be accurate are set out as a general outline only for guidance and do not constitute any part of an offer or contract. Intending purchasers should not rely on them as statements of representation of fact, but must satisfy themselves by inspection or otherwise as to their accuracy. No person in this firms employment has the authority to make or give any representation or warranty in respect of the property.

