



Albert Embankment London

A beautiful three bedroom apartment with parking set in the highly exclusive The Corniche development. This spacious property boasts a double bedroom with ensuite bathroom and walk in wardrobe as well as two private balconies with stunning river views across the capital. Finished to the highest standard the apartment features fully integrated Miele appliances and Villeroy and Boch sanitary ware.

Residents can also benefit from the wonderful communal facilities including the swimming pool, spa, and residents Skyline Bar as well as being ideally located close to zone 1 transport links.

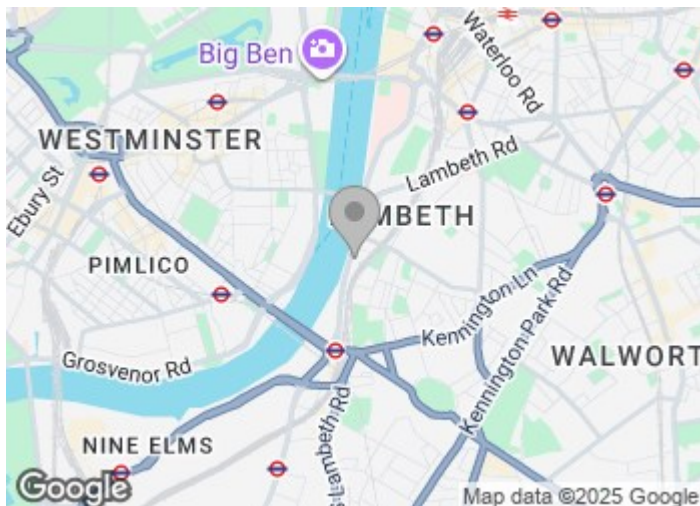
Council Tax Band: Lambeth - H
Minimum contract: 12 months

£1,850 Per Week

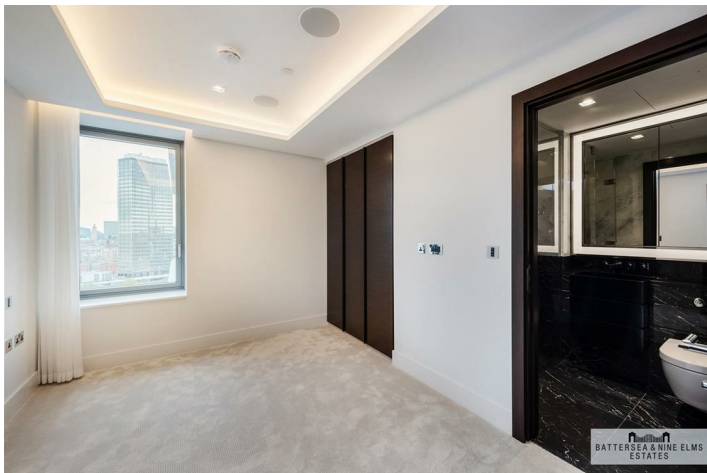
Albert Embankment London



- Three bedrooms
- Two bathrooms
- Balcony
- Swimming pool
- Residents' gym
- 24 hour concierge
- Underfloor heating & comfort cooling
- Zone 1 transport links
- Skyline club



[Directions](#)





The Corniche,
Albert Embankment, SE1
Approximate Gross Internal Area
153.80 sq m / 1,656 sq ft

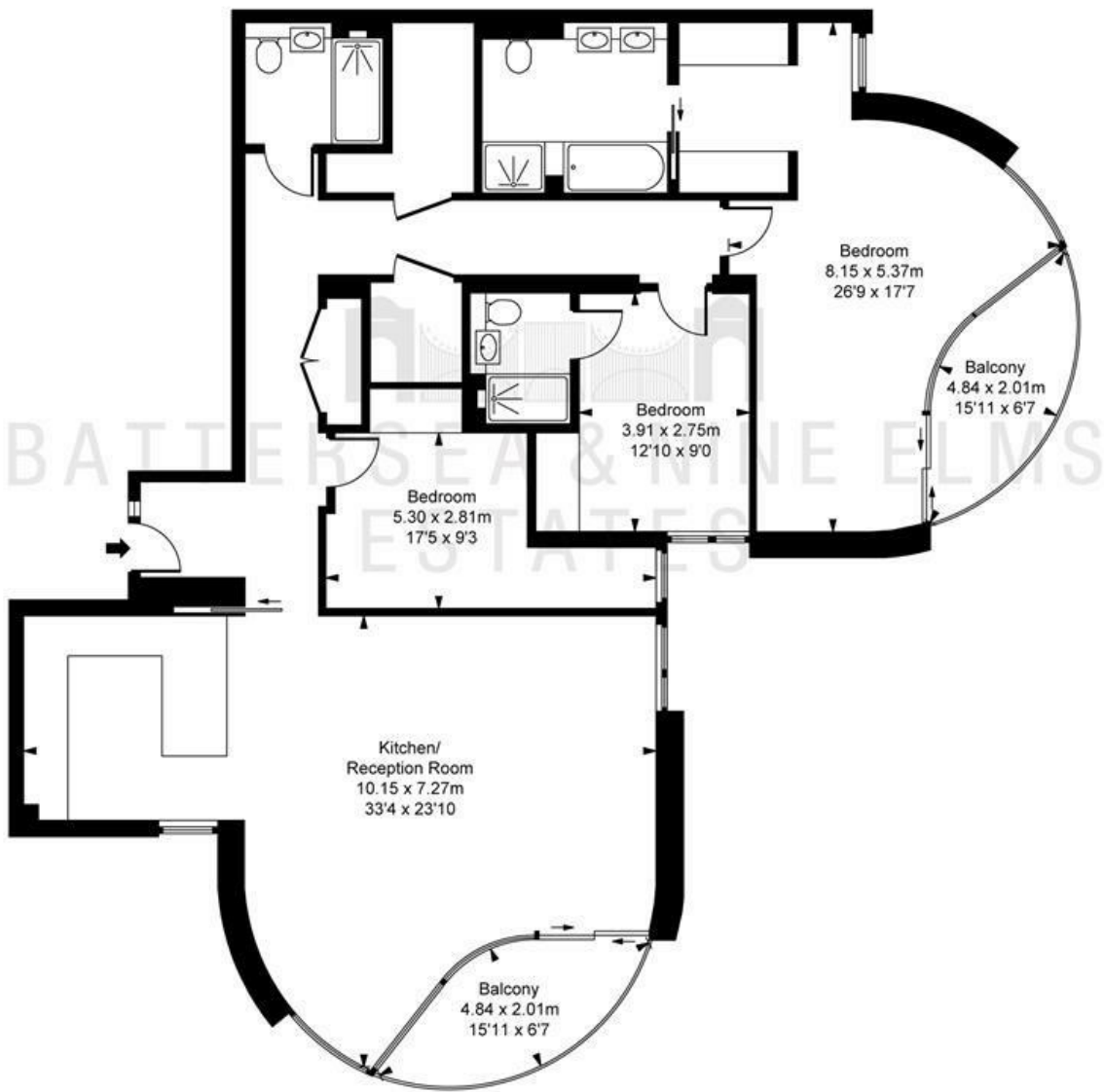


ILLUSTRATION FOR IDENTIFICATION PURPOSES ONLY
ALL MEASUREMENTS AND AREA FIGURES SUPPLIED BY OTHERS, ACCURACY IS NOT GUARANTEED.
THIS PLAN MUST NOT BE REPRODUCED BY ANY OTHER PERSON WITHOUT PERMISSION

These particulars, whilst believed to be accurate are set out as a general outline only for guidance and do not constitute any part of an offer or contract. Intending purchasers should not rely on them as statements of representation of fact, but must satisfy themselves by inspection or otherwise as to their accuracy. No person in this firms employment has the authority to make or give any representation or warranty in respect of the property.

Energy Efficiency Rating				Environmental Impact (CO ₂) Rating			
		Current	Potential			Current	Potential
Very energy efficient - lower running costs				Very environmentally friendly - lower CO ₂ emissions			
(92 plus) A				(92 plus) A			
(81-91) B				(81-91) B			
(69-80) C				(69-80) C			
(55-68) D				(55-68) D			
(39-54) E				(39-54) E			
(21-38) F				(21-38) F			
(1-20) G				(1-20) G			
Not energy efficient - higher running costs				Not environmentally friendly - higher CO ₂ emissions			
England & Wales		EU Directive 2002/91/EC		England & Wales		EU Directive 2002/91/EC	