

Riverlight Quay

Asking Price £785,000

This modern and immaculately presented apartment is situated in the prestigious Riverlight development and offers stylish, contemporary living in one of London's most sought-after riverside locations. The property features two generously sized double bedrooms, two sleek bathrooms, and two private balconies.

The open-plan living area is complemented by a fully custom-designed kitchen, finished to an exceptional standard with premium features such as extra-wide stone worktops, integrated Siemens appliances, and a Gaggenau wine cooler—perfect for modern urban living.

Residents of Riverlight enjoy access to an impressive suite of lifestyle amenities, including a private swimming pool, residents' bar, lounge, library, and a 24-hour concierge service. Located moments from the River Thames and within easy reach of excellent transport links, this apartment offers luxury living in a vibrant and well-connected part of London.

Approx. 986 years remaining on lease
Ground rent amount: Ask Agent
Ground rent review period: Ask Agent
Service charge amount: approx. : Ask Agent
Council tax band: E (Wandsworth Council)

Electricity supply – Mains | Heating – Mains | Water supply – Mains | Sewerage – Mains | Internet: Ftp | Lift Access | Cladding: EWS1 Certificate available

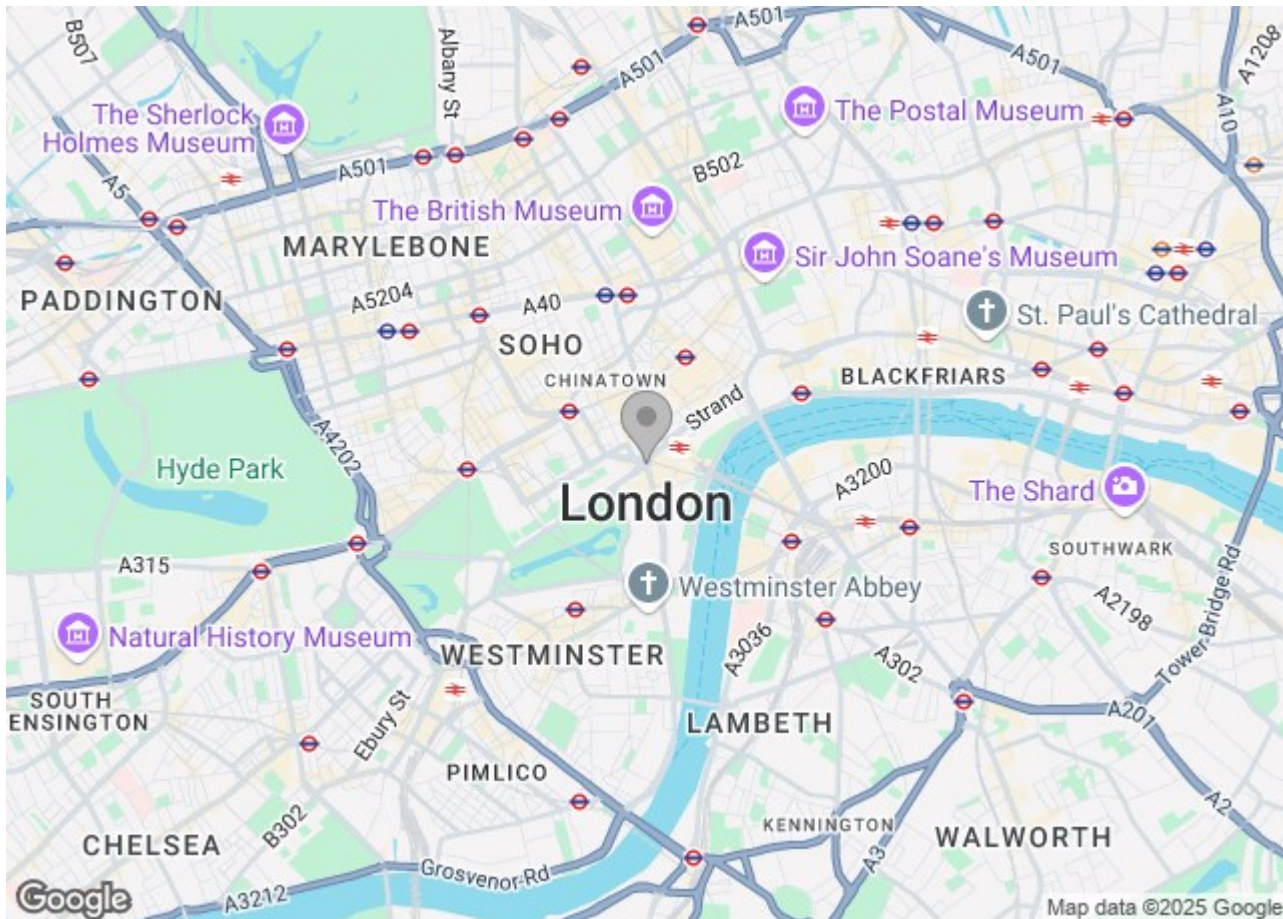
To check broadband and mobile phone coverage please visit Ofcom.

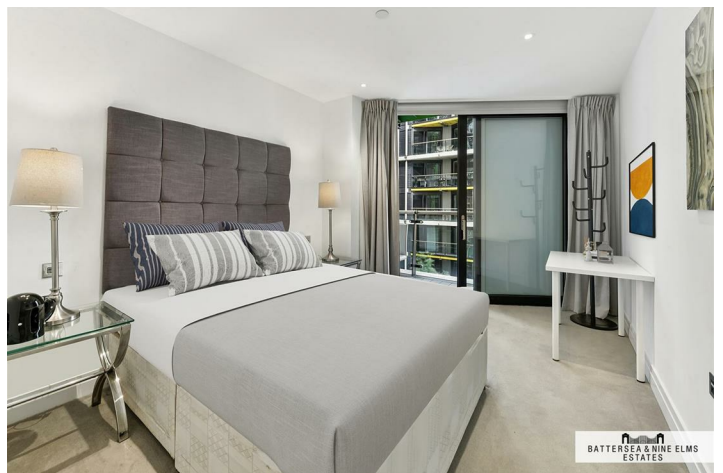
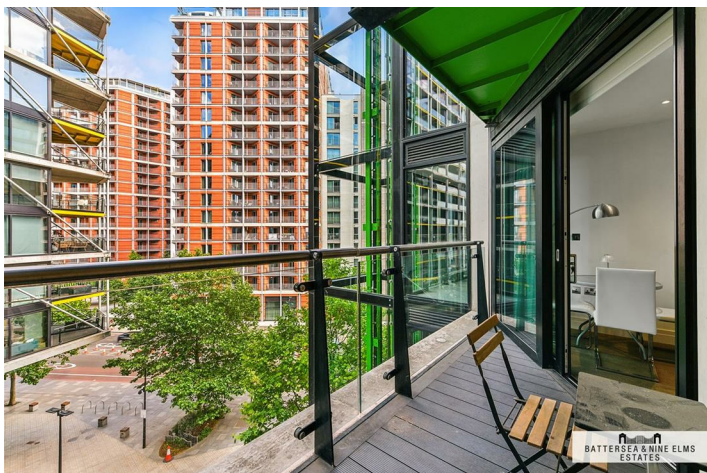
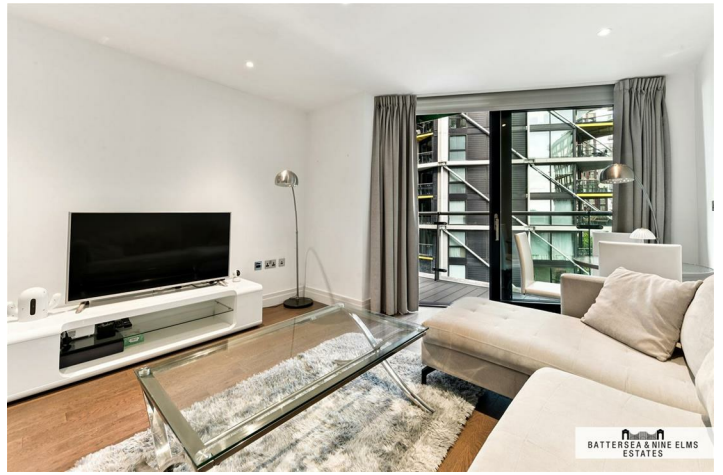
To check planning permission please visit Wandsworth Council Website, Planning & Building Control

Riverlight Quay London

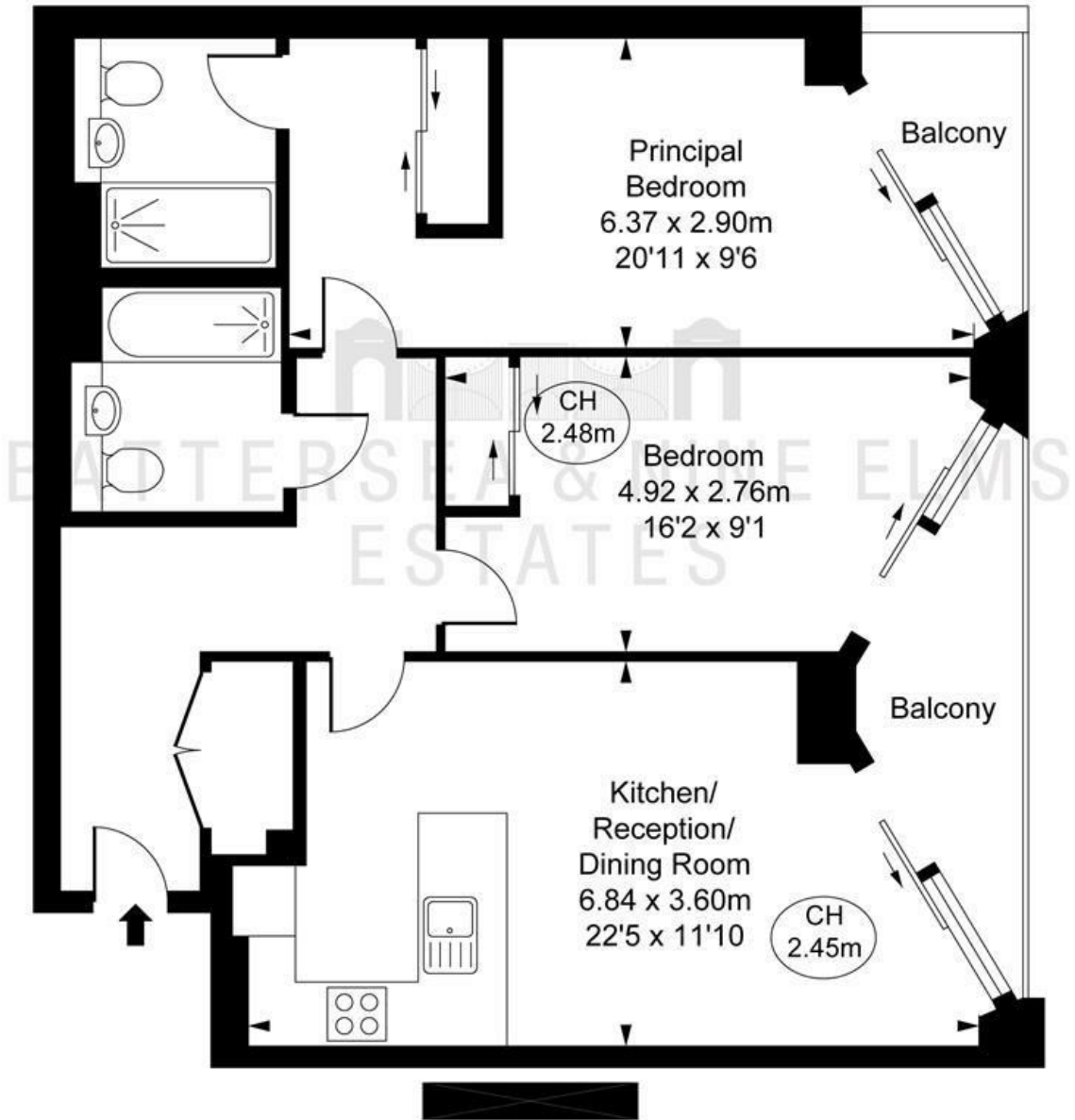


- Two Double Bedrooms
- 24-Hour Concierge
- Comfort Cooling & Underfloor Heating
- Two Bathrooms (One Ensuite)
- Gymnasium & Pool
- Residents Lounge & Library
- Two Balconies
- Cinema
- Zone 1 Transport Links





Riverlight Quay, SW11
Approximate Gross Internal Area
71.60 sq m / 771 sq ft
(CH = Ceiling Heights)



This plan is not to scale. It is for guidance and not for valuation purposes.
All measurements and areas are approximate only, and have been prepared in accordance with the current edition of the RICS Code of Measuring Practice.
© Fulham Performance

These particulars, whilst believed to be accurate are set out as a general outline only for guidance and do not constitute any part of an offer or contract. Intending purchasers should not rely on them as statements of representation of fact, but must satisfy themselves by inspection or otherwise as to their accuracy. No person in this firm's employment has the authority to make or give any representation or warranty in respect of the property.

| Energy Efficiency Rating | | | Environmental Impact (CO ₂) Rating | | |
|---|-------------------------|-----------|---|-------------------------|-----------|
| | Current | Potential | | Current | Potential |
| Very energy efficient - lower running costs | | | Very environmentally friendly - lower CO ₂ emissions | | |
| (92 plus) A | | | (92 plus) A | | |
| (81-91) B | | | (81-91) B | | |
| (69-80) C | | | (69-80) C | | |
| (55-68) D | | | (55-68) D | | |
| (39-54) E | | | (39-54) E | | |
| (21-38) F | | | (21-38) F | | |
| (1-20) G | | | (1-20) G | | |
| Not energy efficient - higher running costs | | | Not environmentally friendly - higher CO ₂ emissions | | |
| England & Wales | EU Directive 2002/91/EC | | England & Wales | EU Directive 2002/91/EC | |