



## 3 Lanchester Way London

**£850 Per Week**

This lovely two double bedroom apartment is set in the luxury Lexington Gardens development, benefitting from contemporary design and finish.

Lexington Gardens offers a 24-hour concierge service, private residents' gymnasium, a state-of-the-art media room and private roof garden. This stunning development is just a short walk from London's most fashionable neighbourhoods and is surrounded by amenities.

Zone 1 transport links from Nine Elms and Vauxhall also close by.

Council Tax Band: Wandsworth - F  
Minimum contract: 12 months  
Change of contract fee: £50 including VAT  
Lift access | Cladding: EWS1 Certificate available  
Holding Deposit - £850 (1 weeks rent, subject to agreed offer)

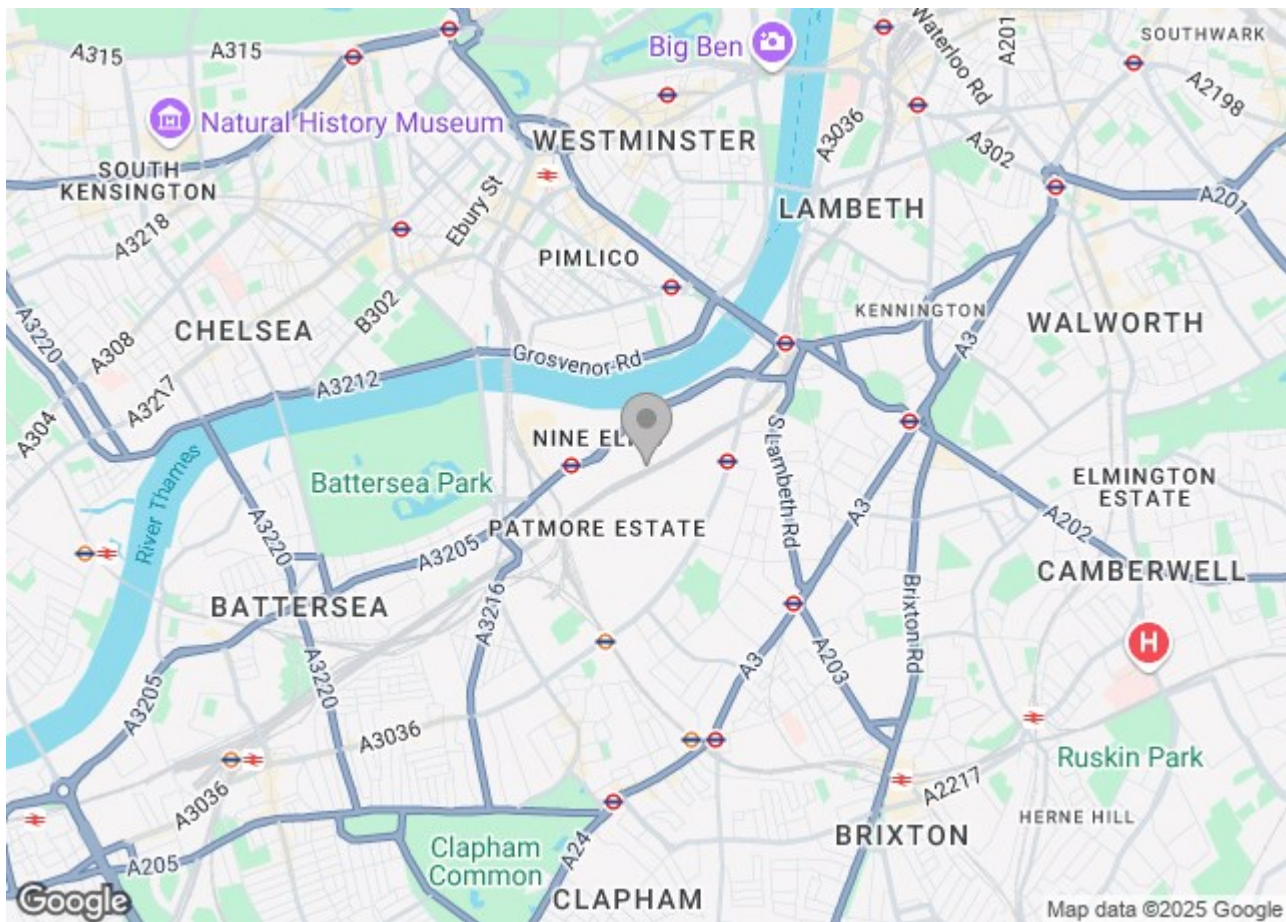
Electricity supply – Mains | Cold Water supply – Mains | Sewerage – Mains | Hot water, heating – Communal | Internet: Fttp

To check broadband and mobile phone coverage please visit Ofcom.  
To check planning permission please visit Wandsworth Council Website. Planning & Building Control

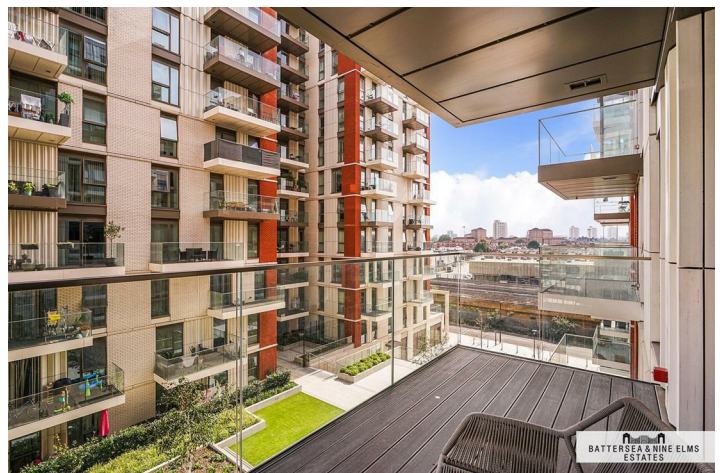
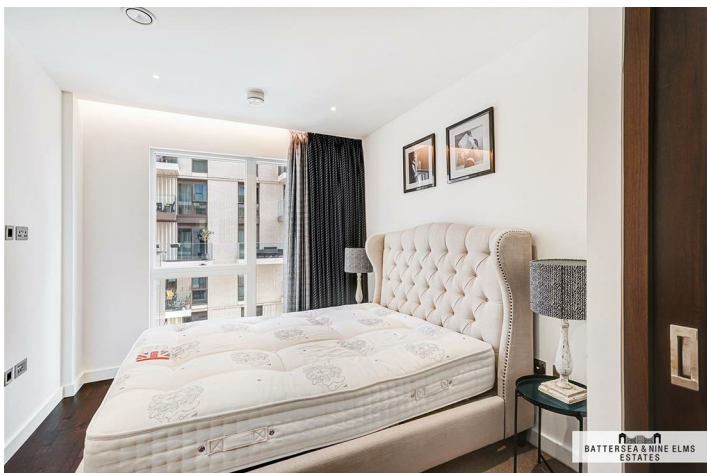
### 3 Lanchester Way London



- Two bedrooms
- Dishwasher & combination washer / dryer
- Gymnasium
- Two bathrooms (one en suite)
- Close to the River Thames
- Underfloor heating
- Zone 1 transport links







Senate Building,  
Lanchester Way, SW11  
Approximate Gross Internal Area  
77.5 sq m / 834 sq ft

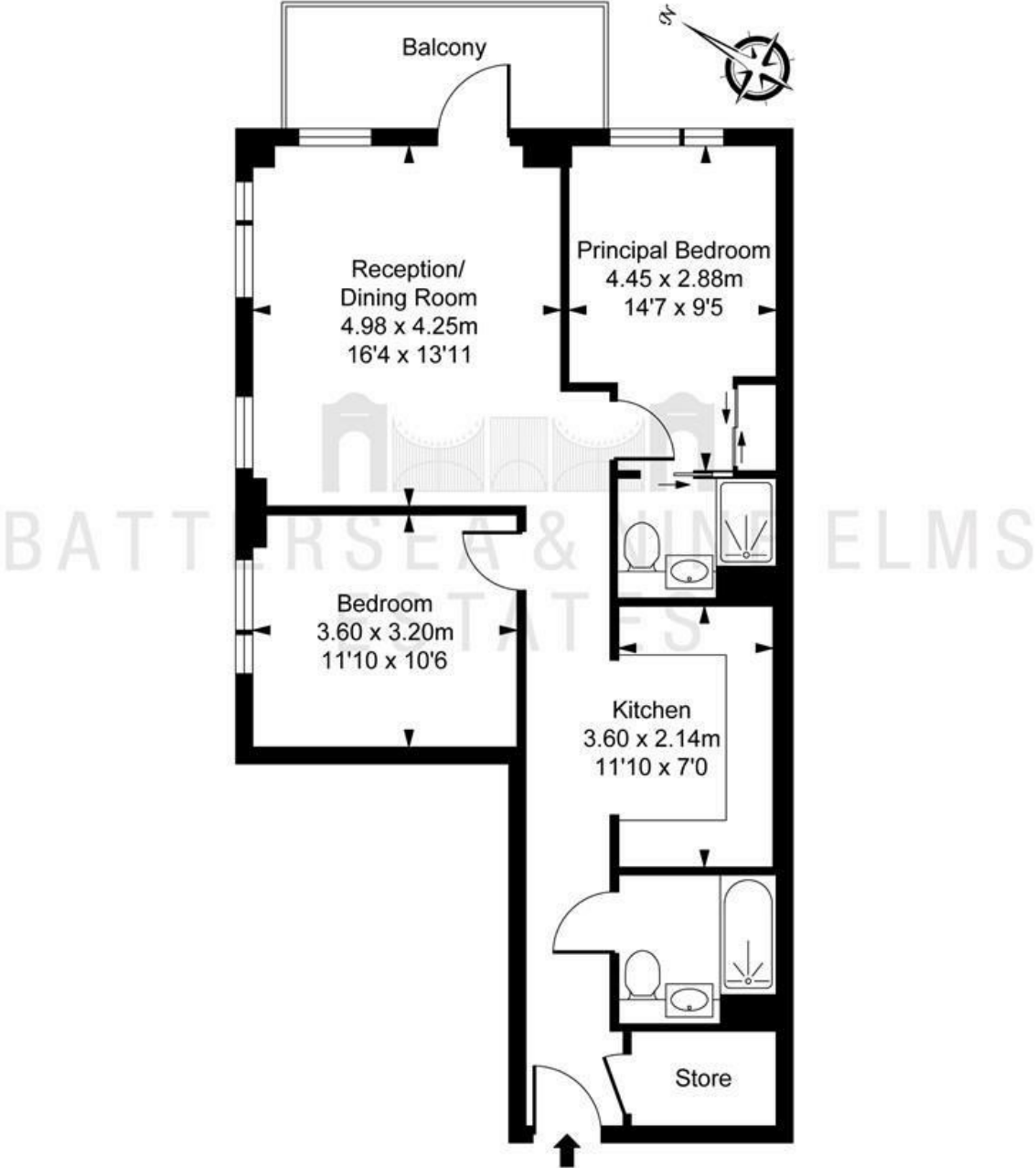


ILLUSTRATION FOR IDENTIFICATION PURPOSES ONLY  
ALL MEASUREMENTS AND AREA FIGURES SUPPLIED BY OTHERS. ACCURACY IS NOT GUARANTEED.  
THIS PLAN MUST NOT BE REPRODUCED BY ANY OTHER PERSON WITHOUT PERMISSION

These particulars, whilst believed to be accurate are set out as a general outline only for guidance and do not constitute any part of an offer or contract. Intending purchasers should not rely on them as statements of representation of fact, but must satisfy themselves by inspection or otherwise as to their accuracy. No person in this firm's employment has the authority to make or give any representation or warranty in respect of the property.

