



**BATTERSEA & NINE ELMS  
ESTATES**



## Dumont London

**£1,150 Per Week**

A stunning, river facing apartment in The Dumont. With direct river views, the property offers two double bedrooms, two bathrooms and open plan kitchen / reception room and comfort cooling & underfloor heating.

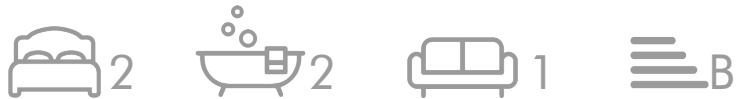
The Dumont delivers outstanding resident facilities which include a 24 hour concierge, residents gym, swimming pool & spa, in addition to a private cinema suite, bowling alley and access to the Skyline Club Lounge in the sister development of The Corniche.

Council Tax Band: Lambeth - G  
Minimum contract: 12 months  
Change of contract fee: £50 including VAT  
Lift access | Cladding: EWS1 Certificate available  
Holding Deposit - £1,150 (1 weeks rent, subject to agreed offer)

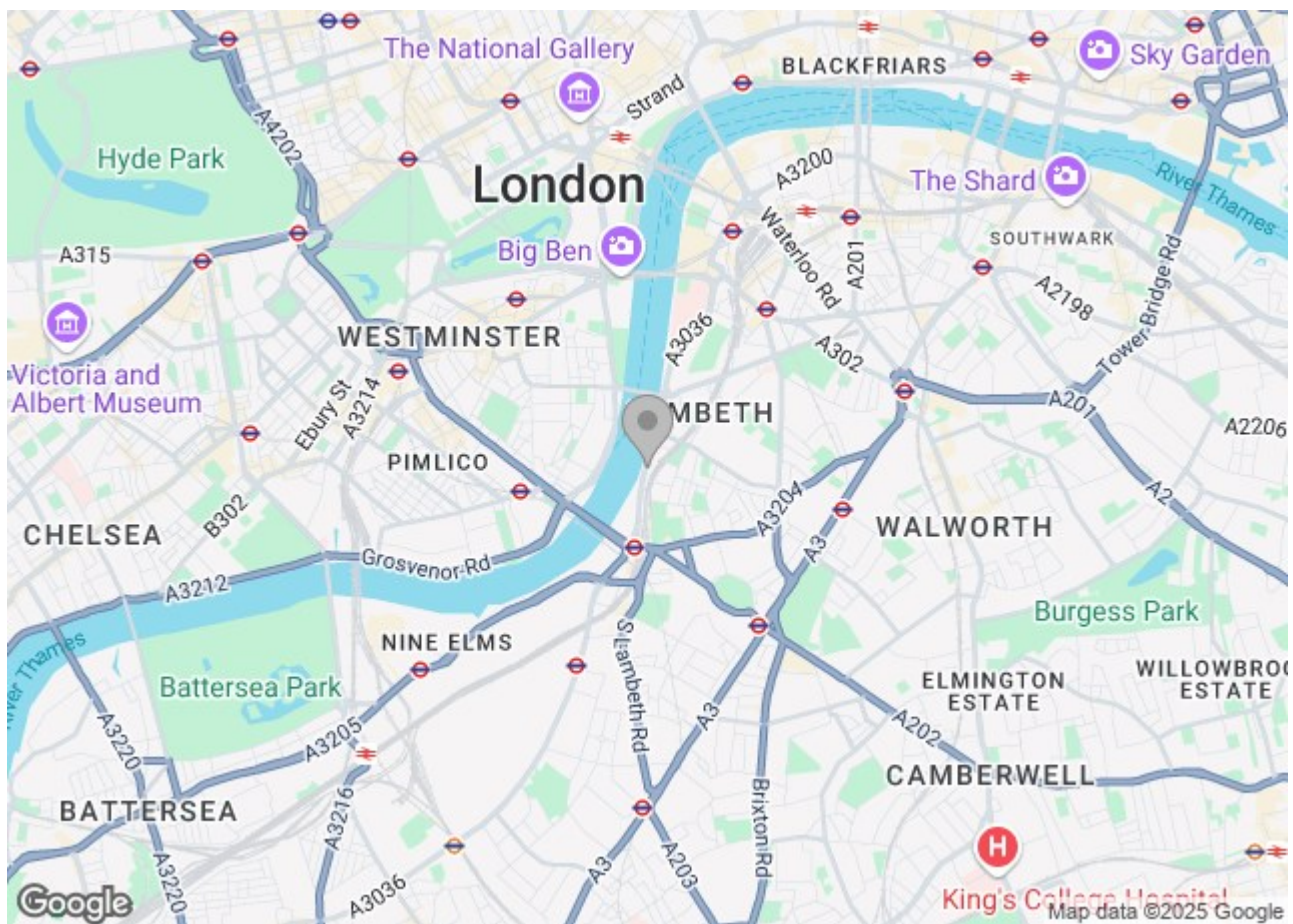
Electricity supply – Mains | Cold Water supply – Mains | Sewerage – Mains | Heating & comfort cooling – Communal | Internet: Fttp

To check broadband and mobile phone coverage please visit Ofcom.

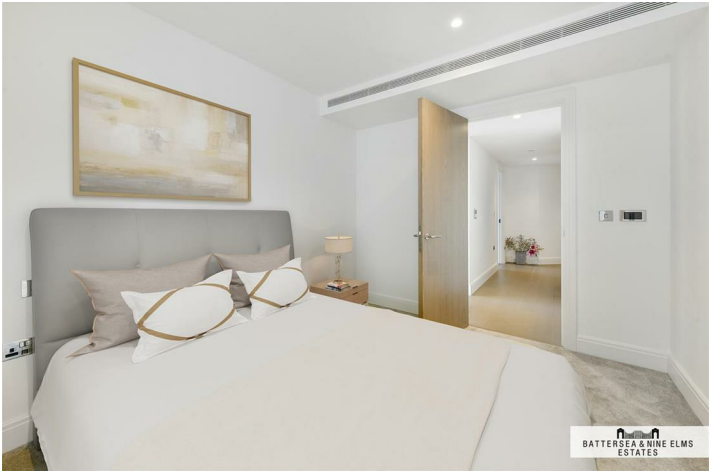
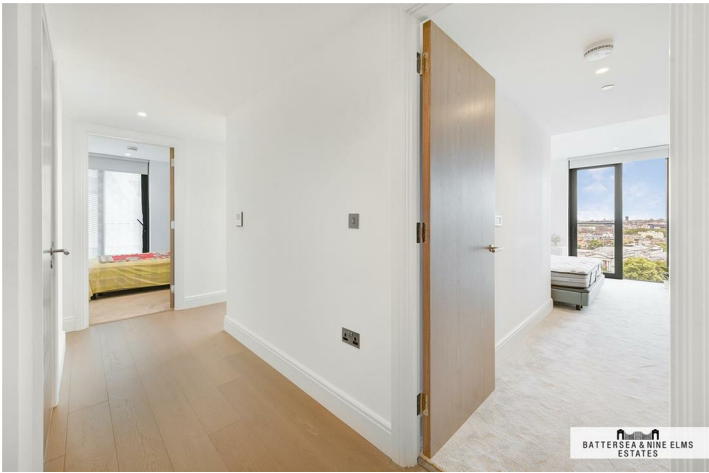
# Dumont London



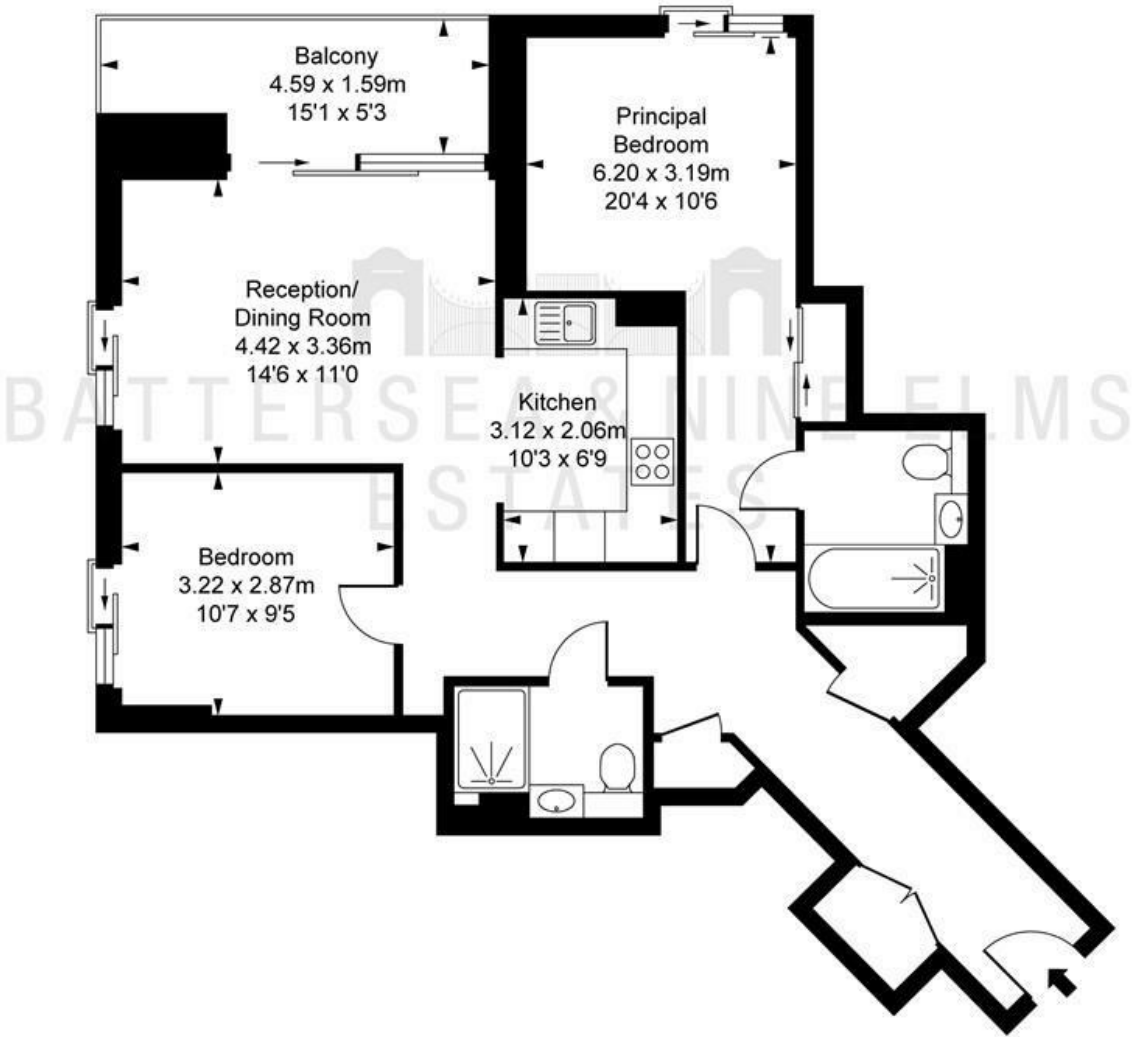
- 24 hour concierge
- Private balcony with river views
- Residents' pool and spa
- Comfort cooling and underfloor heating
- Residents' bowling alley
- Residents' gym







Dumont,  
Albert Embankment, SE1  
Approximate Gross Internal Area  
74.51 sq m / 802 sq ft  
( CH = Ceiling Heights )



This plan is not to scale. It is for guidance and not for valuation purposes.  
All measurements and areas are approximate only, and have been prepared in accordance with the current edition of the RICS Code of Measuring Practice.  
© Fulham Performance

These particulars, whilst believed to be accurate are set out as a general outline only for guidance and do not constitute any part of an offer or contract. Intending purchasers should not rely on them as statements of representation of fact, but must satisfy themselves by inspection or otherwise as to their accuracy. No person in this firm's employment has the authority to make or give any representation or warranty in respect of the property.

Energy Efficiency Rating		Environmental Impact (CO <sub>2</sub> ) Rating	
Current	Potential	Current	Potential
England & Wales		England & Wales	