

1 Viaduct Gardens London

£1,000 Per Week

A stunning two bedroom, two bathroom apartment arranged over a high floor in Legacy Building, Embassy Gardens.

This apartment features comfort cooling, fully integrated appliances, such as a dishwasher, combination washer/ dryer, wine cooler and a private balcony.

Residents can benefit from exciting communal amenities including the wonderful Sky Pool, Sky Deck and Orangery restaurant as well as the gym, spa and private cinema. The development is situated close to zone one transport links including Vauxhall & Nine Elms station.

Minimum contract: 12 months
Council tax band : Wandsworth Council - F
Change of contract fee: £50 including VAT
Lift access | Cladding: EWS1 Certificate available
Holding Deposit - £1,000 (1 weeks rent, subject to agreed offer)

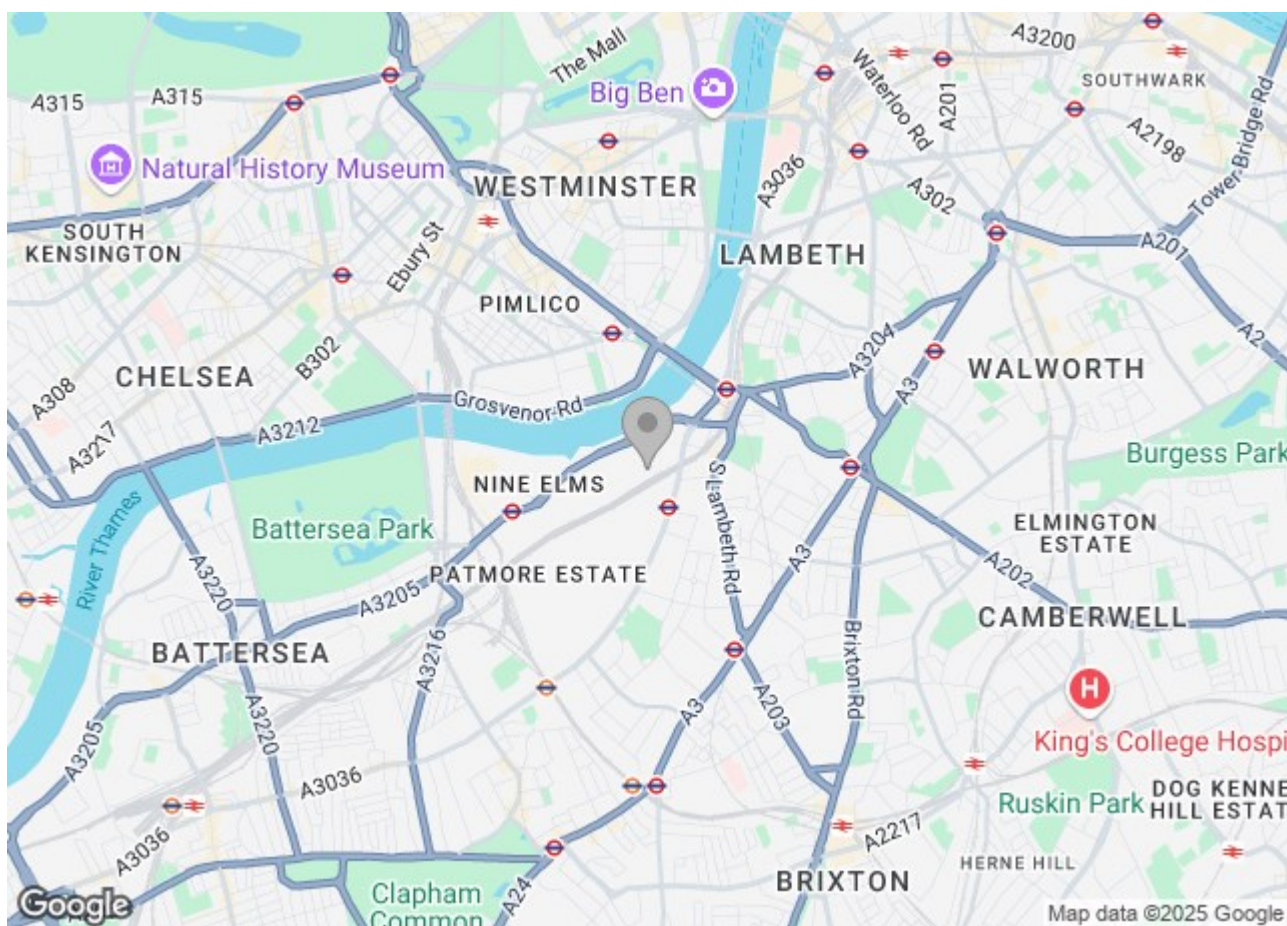
Electricity supply – Mains | Cold Water supply – Mains | Sewerage – Mains | Heating & comfort cooling – Communal | Internet: FTTP

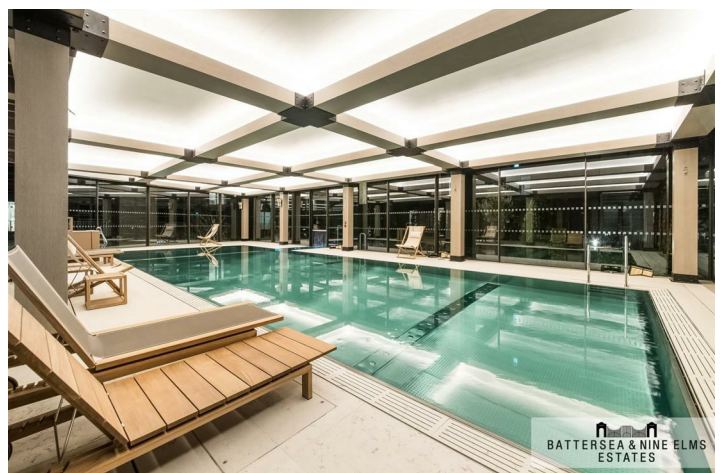
To check broadband and mobile phone coverage please visit Ofcom.
To check planning permission please visit Wandsworth Council Website: Planning & Building Control

1 Viaduct Gardens London



- Two double bedrooms
- Excellent transport links
- Private cinema
- Two bathrooms (one en suite)
- Sky pool
- Indoor pool and spa
- 24 Hour concierge
- Gymnasium





Legacy Building,
Embassy Gardens, SW11
Approximate Gross Internal Area
81.1 sq m / 873 sq ft

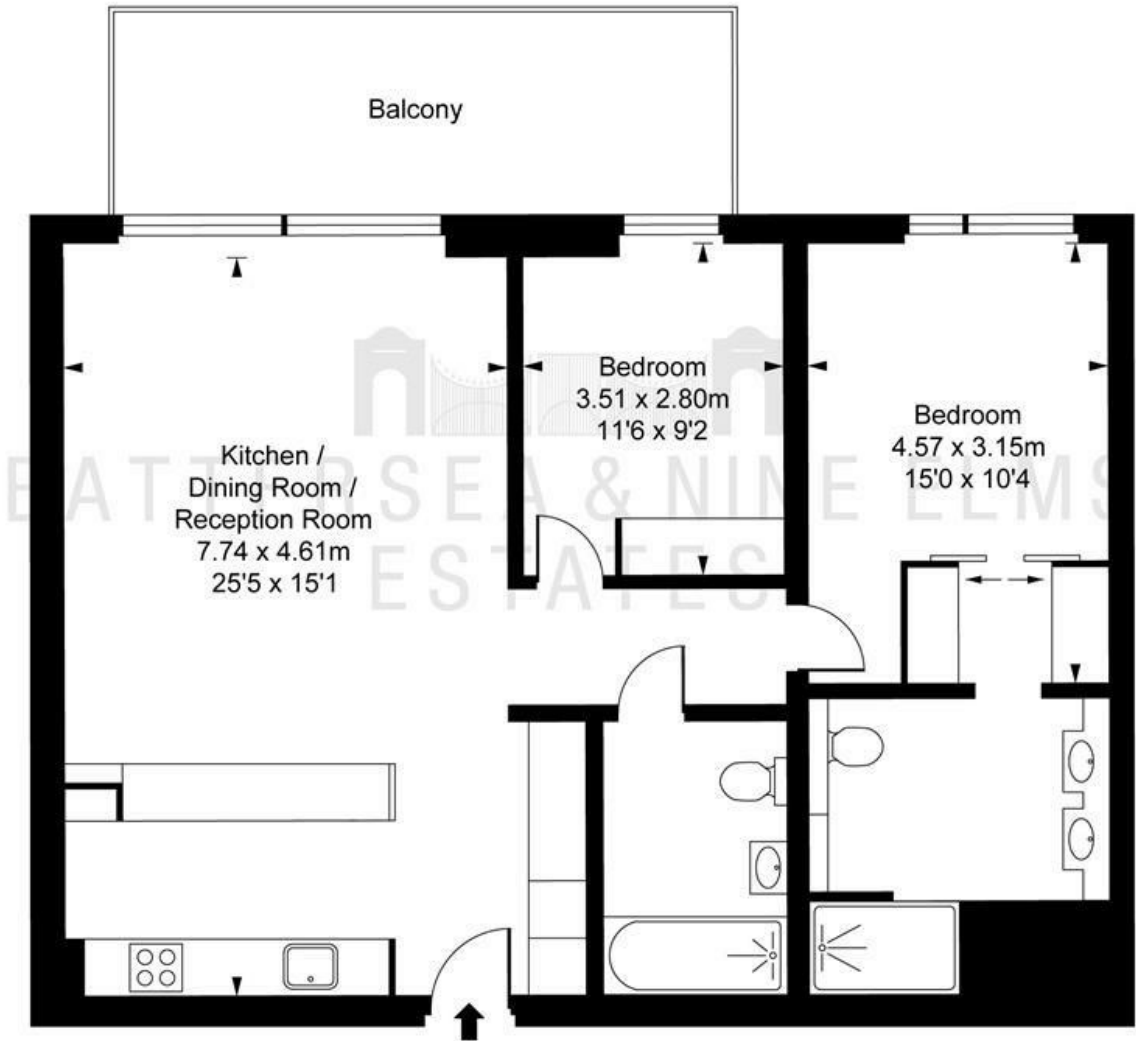


ILLUSTRATION FOR IDENTIFICATION PURPOSES ONLY
ALL MEASUREMENTS AND AREA FIGURES SUPPLIED BY OTHERS. ACCURACY IS NOT GUARANTEED.
THIS PLAN MUST NOT BE REPRODUCED BY ANY OTHER PERSON WITHOUT PERMISSION

These particulars, whilst believed to be accurate are set out as a general outline only for guidance and do not constitute any part of an offer or contract. Intending purchasers should not rely on them as statements of representation of fact, but must satisfy themselves by inspection or otherwise as to their accuracy. No person in this firms employment has the authority to make or give any representation or warranty in respect of the property.

