



## 8 New Union Square London

**£1,400 Per Week**

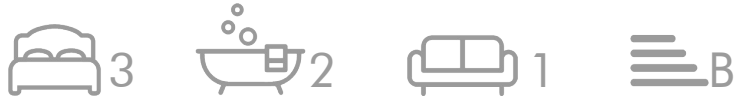
A beautifully presented three-bedroom, two-bathroom apartment in The Capital Building, part of the prestigious Embassy Gardens development. Located in the heart of the vibrant Nine Elms regeneration area, this sought-after residence is just moments from the US Embassy. Residents enjoy excellent transport connections and access to outstanding communal amenities, including a state-of-the-art fitness centre, a private residents' library, and 24-hour concierge service.

Council Tax Band: Wandsworth - G  
Minimum contract: 12 months  
Change of contract fee: £50 including VAT  
Lift access |  
Holding Deposit - £1400 (1 weeks rent, subject to agreed offer)

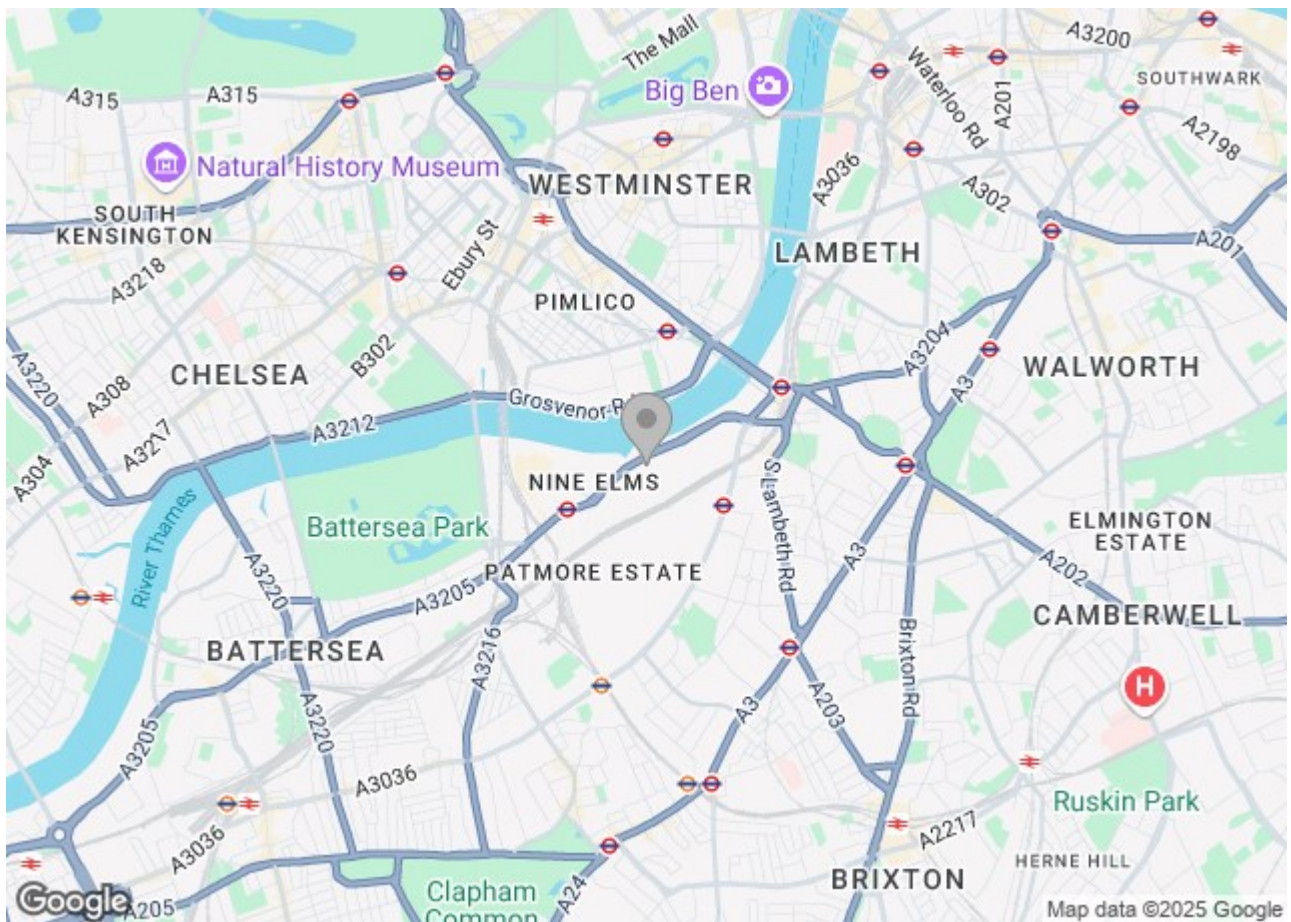
Electricity supply – Mains | Cold Water supply – Mains | Sewerage – Mains | Hot water, heating & comfort cooling – District communal | Internet: Fttp

To check broadband and mobile phone coverage please visit Ofcom.  
To check planning permission please visit Wandsworth Council Website, Planning & Building Control

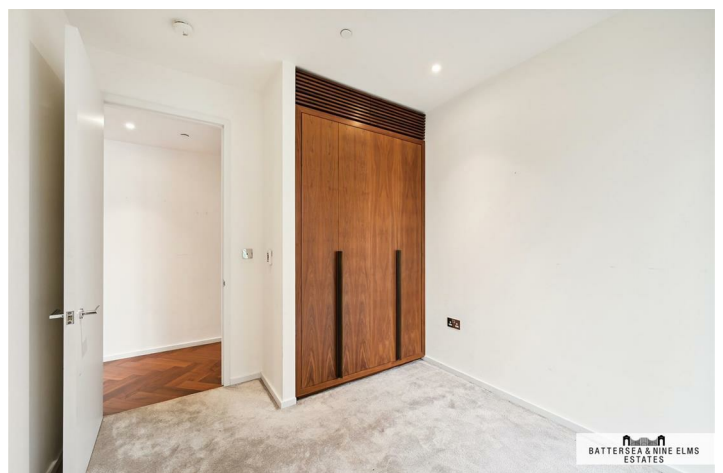
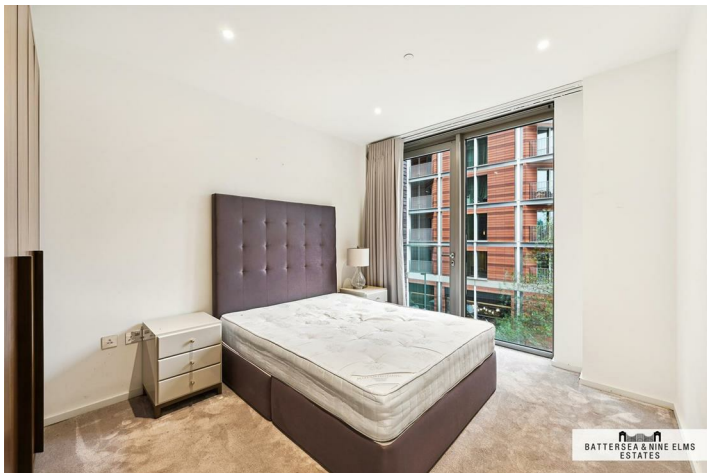
## 8 New Union Square London



- Three bedrooms
- Two bathrooms
- 24 hour concierge
- Sky pool
- Zone 1 Transport links
- Short walk to River Thames







Floor Plan

Capital Building,  
Embassy Gardens, SW8  
Approximate Gross Internal Area  
122.20 sq m / 1,315 sq ft

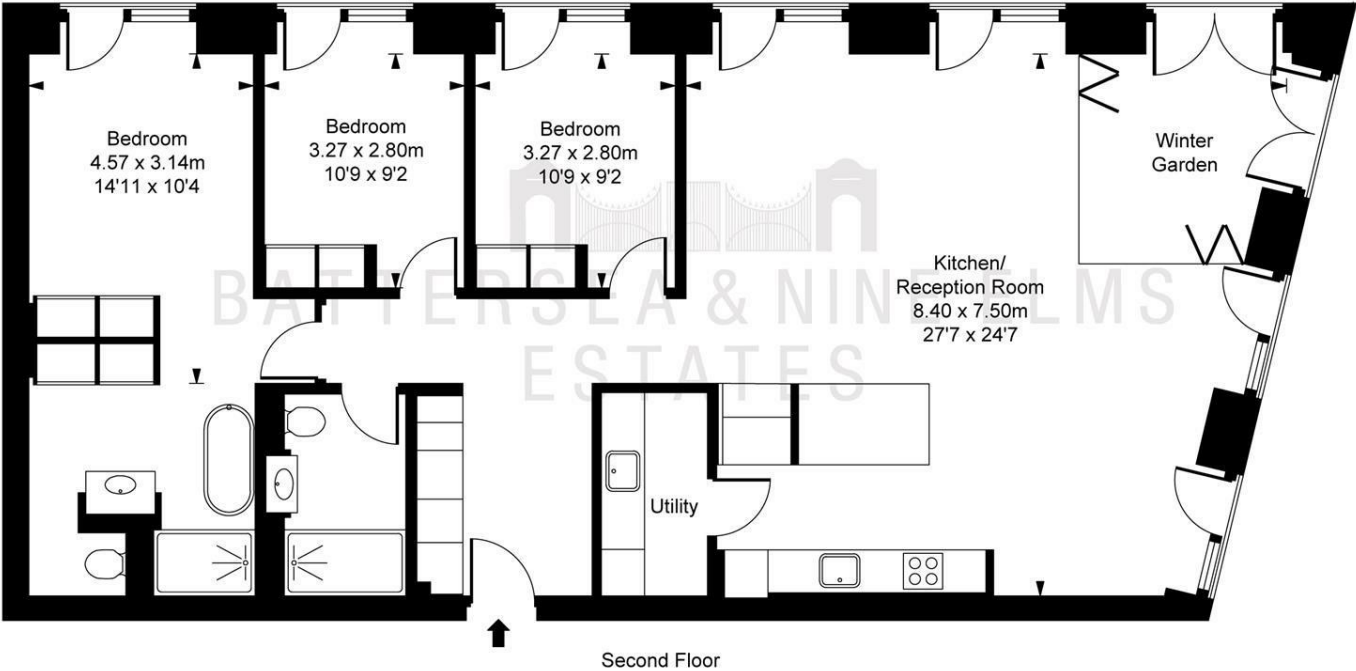


ILLUSTRATION FOR IDENTIFICATION PURPOSES ONLY  
ALL MEASUREMENTS AND AREA FIGURES SUPPLIED BY OTHERS, ACCURACY IS NOT GUARANTEED.  
THIS PLAN MUST NOT BE REPRODUCED BY ANY OTHER PERSON WITHOUT PERMISSION

These particulars, whilst believed to be accurate are set out as a general outline only for guidance and do not constitute any part of an offer or contract. Intending purchasers should not rely on them as statements of representation of fact, but must satisfy themselves by inspection or otherwise as to their accuracy. No person in this firm's employment has the authority to make or give any representation or warranty in respect of the property.

