

1 Viaduct Gardens London

£1,200 Per Week

A stunning two bedroom apartment with far reaching views. This brand new apartment arranged over a high floor of Legacy Building offers bright and spacious accommodation, with underfloor heating & comfort cooling.

Residents can take advantage of the exciting communal amenities including the wonderful Sky Pool, Sky Deck and Orangery restaurant as well as the gym, spa and private cinema. The development is located close to zone one transport links including Vauxhall station.

Council Tax - Wandsworth - F
Minimum contract: 12 months
Change of contract fee: £50 including VAT
Lift access | Cladding: EWS1 Certificate available
Holding Deposit £1,200 (1 weeks rent)

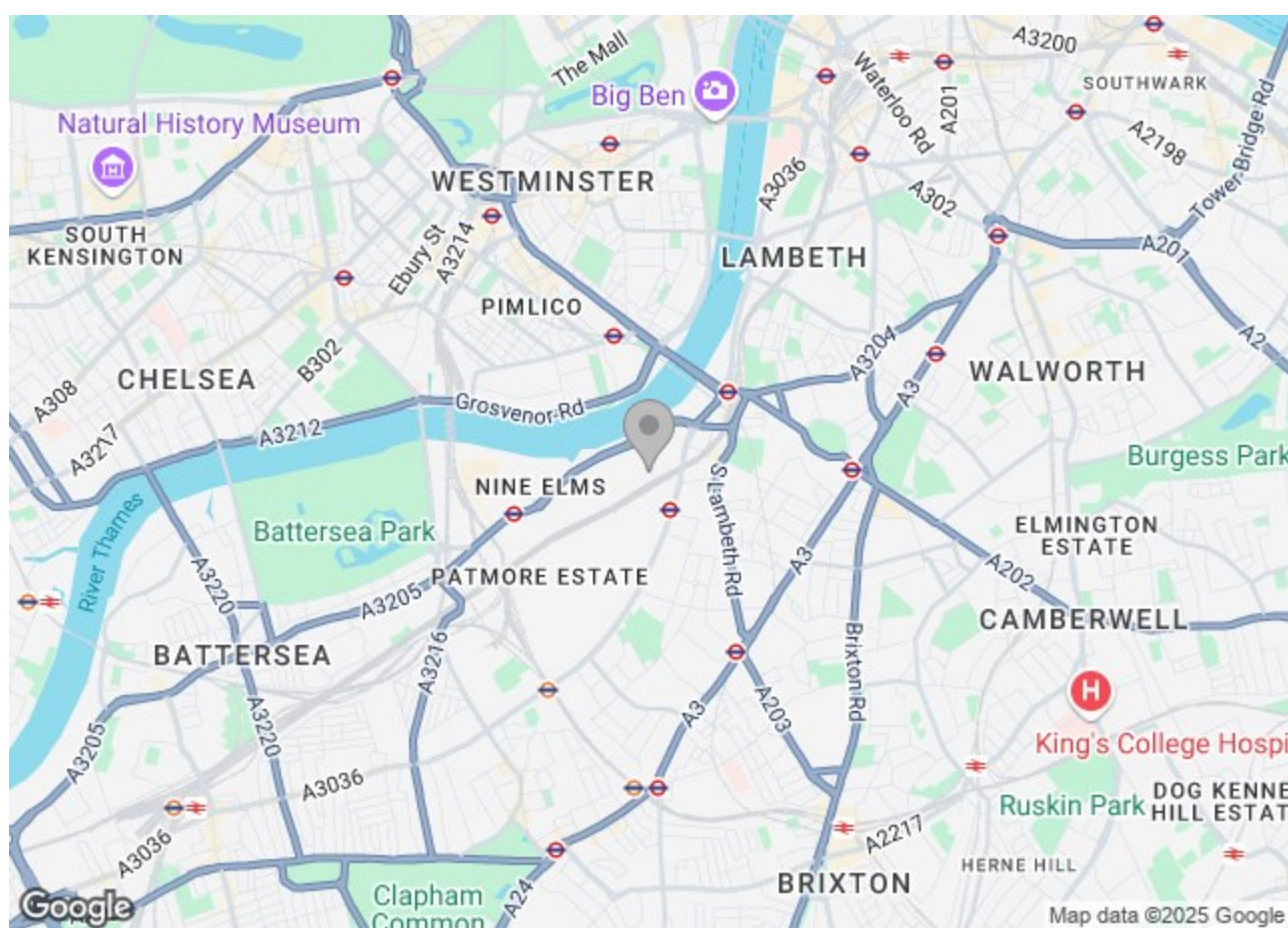
Electricity supply – Mains | Cold Water supply – Mains | Sewerage – Mains | Heating – Communal | Internet: Fttp |
Parking available by separate negotiation.

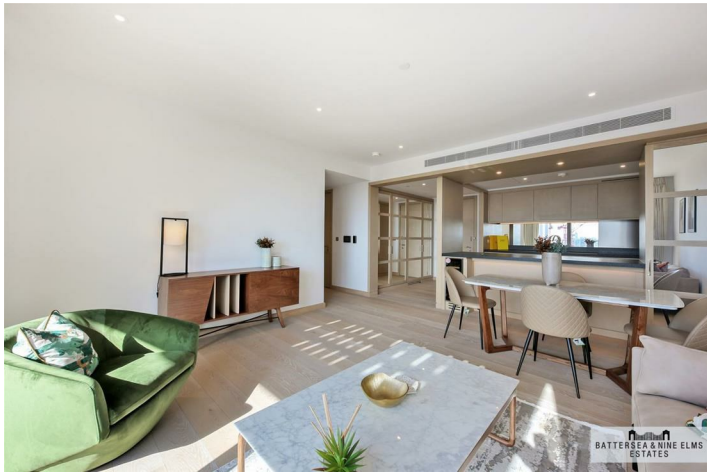
To check broadband and mobile phone coverage please visit Ofcom.

1 Viaduct Gardens London



- Two double bedrooms
- Two bathrooms (one en suite)
- 24 Hour concierge
- Sky pool and sky deck
- Residents cinema suite
- Residents gym & indoor swimming pool





Legacy Building,
Embassy Gardens, SW11
Approximate Gross Internal Area
81.1 sq m / 873 sq ft

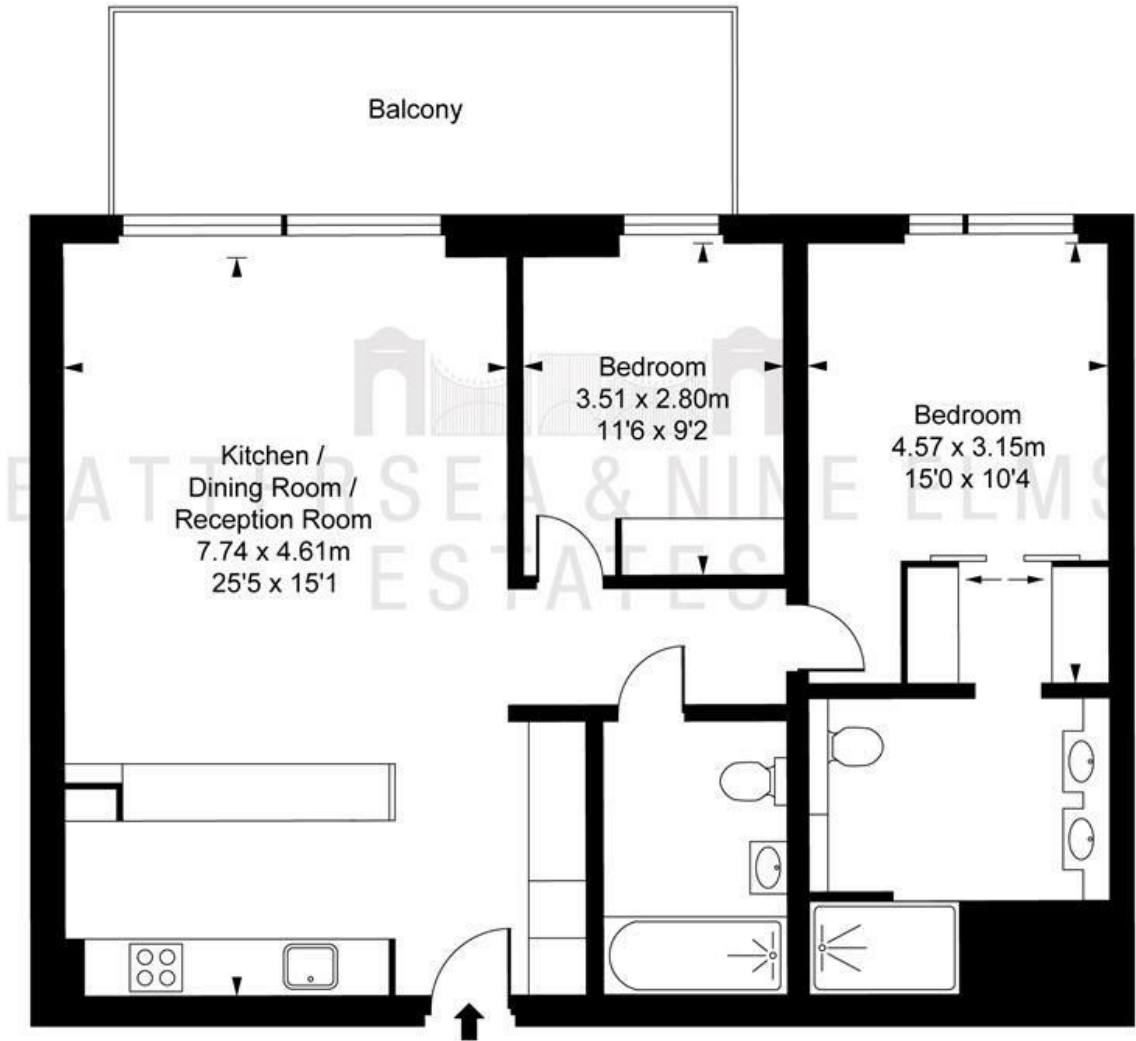


ILLUSTRATION FOR IDENTIFICATION PURPOSES ONLY
ALL MEASUREMENTS AND AREA FIGURES SUPPLIED BY OTHERS. ACCURACY IS NOT GUARANTEED.
THIS PLAN MUST NOT BE REPRODUCED BY ANY OTHER PERSON WITHOUT PERMISSION

These particulars, whilst believed to be accurate are set out as a general outline only for guidance and do not constitute any part of an offer or contract. Intending purchasers should not rely on them as statements of representation of fact, but must satisfy themselves by inspection or otherwise as to their accuracy. No person in this firm's employment has the authority to make or give any representation or warranty in respect of the property.

