

50 Wandsworth Road London

£1,338 Per Week

A stunning apartment located in the vibrant Nine Elms Point area. This luxurious new build property, offers a generous living space of 1,300 square feet (approx).

The apartment features three spacious bedrooms, providing ample room for relaxation and privacy. With two well-appointed bathrooms. The design of the property reflects modern elegance, with high-quality finishes and thoughtful layouts that enhance the living experience.

As part of a luxury development, residents of Gladwin Tower enjoy exclusive access to a state-of-the-art gym, perfect for maintaining an active lifestyle without leaving the comfort of home. Additionally, the 24-hour concierge service adds an extra layer of convenience and security.

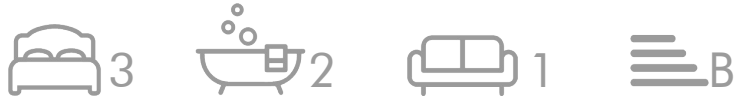
Situated in the thriving Nine Elms Point development, this property is well-connected to the heart of London.

Council Tax Band: Lambeth - G
Minimum contract: 12 months
Change of contract fee: £50 including VAT
Lift access
Holding Deposit - £1,338 (1 weeks rent, subject to agreed offer)

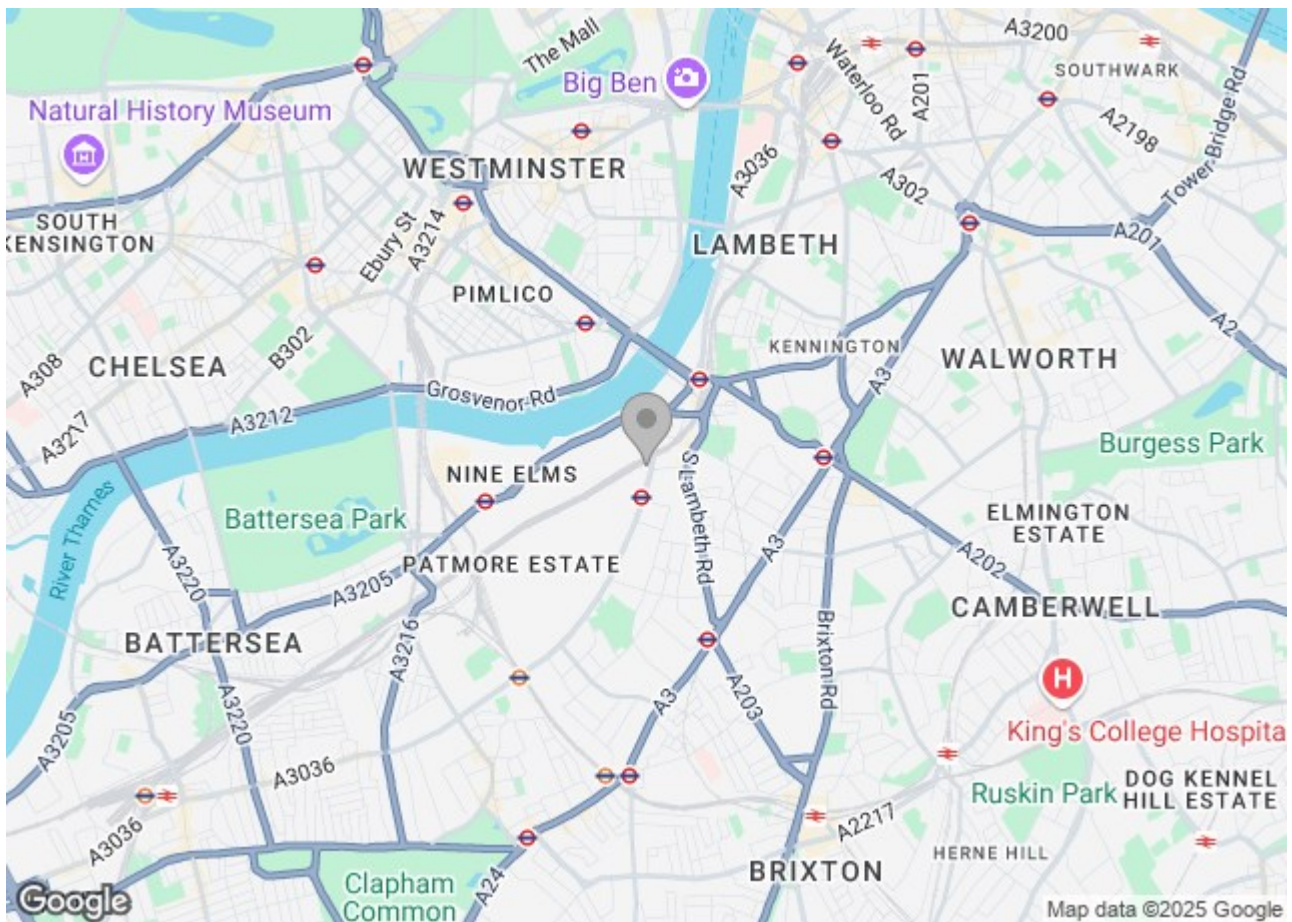
Electricity supply – Mains | Cold Water supply – Mains | Sewerage – Mains | Heating – Communal | Internet: FTTP

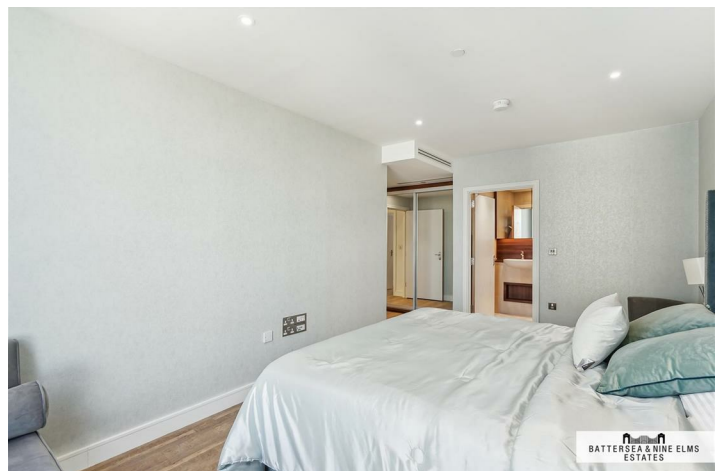
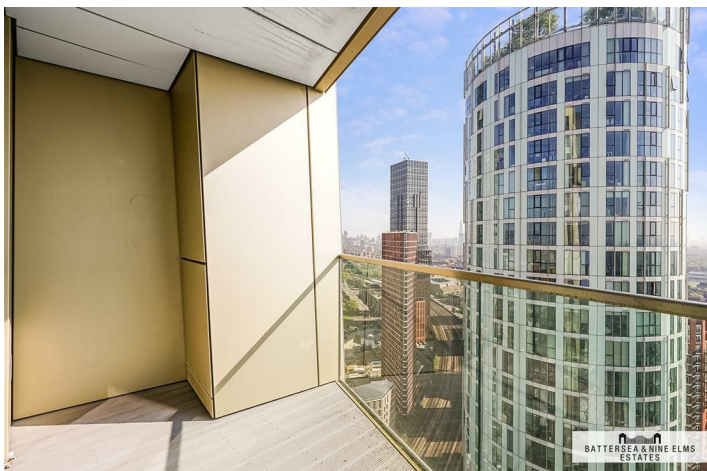
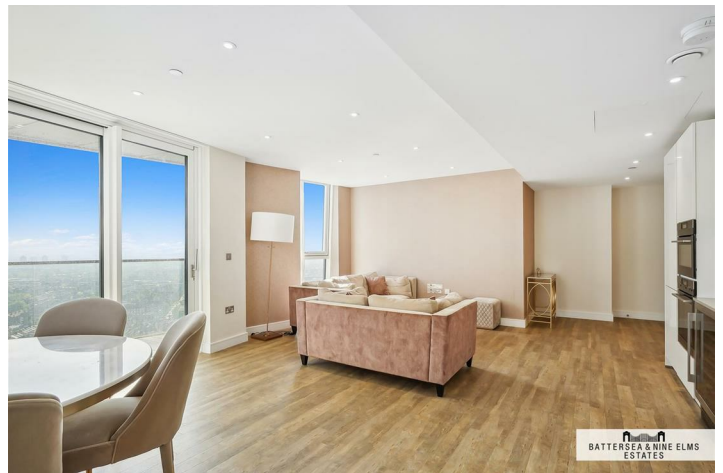
To check broadband and mobile phone coverage please visit Ofcom.

50 Wandsworth Road London



- 24 Hour concierge
- Residents dining Room
- Private balcony
- Residents meeting room
- Residents gym & screening room
- Zone 1 transport links





Floor Plan



These particulars, whilst believed to be accurate are set out as a general outline only for guidance and do not constitute any part of an offer or contract. Intending purchasers should not rely on them as statements of representation of fact, but must satisfy themselves by inspection or otherwise as to their accuracy. No person in this firm's employment has the authority to make or give any representation or warranty in respect of the property.

