

10 Electric Boulevard London

£1,350 Per Week

A stunning two bedroom, two bathroom apartment available to rent in the exclusive Battersea Power Station Phase 3.

Featuring parquet style floors and neutral tones, this luxury apartment offers high specification design and finish including underfloor heating and comfort cooling.

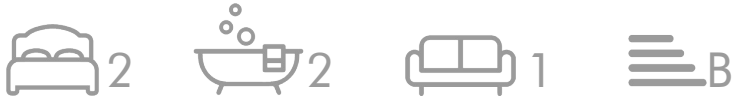
Situated in the heart of the iconic development, residents can take advantage of the selection of vibrant shops, restaurants and leisure spaces available to them. The River Thames, Chelsea, Battersea Park and zone 1 tube and rail stations are located close by.

Council Tax Band: Wandsworth - F
Minimum contract: 12 months
Change of contract fee: £50 including VAT
Lift access
Holding Deposit - £1,350 (1 weeks rent, subject to agreed offer)

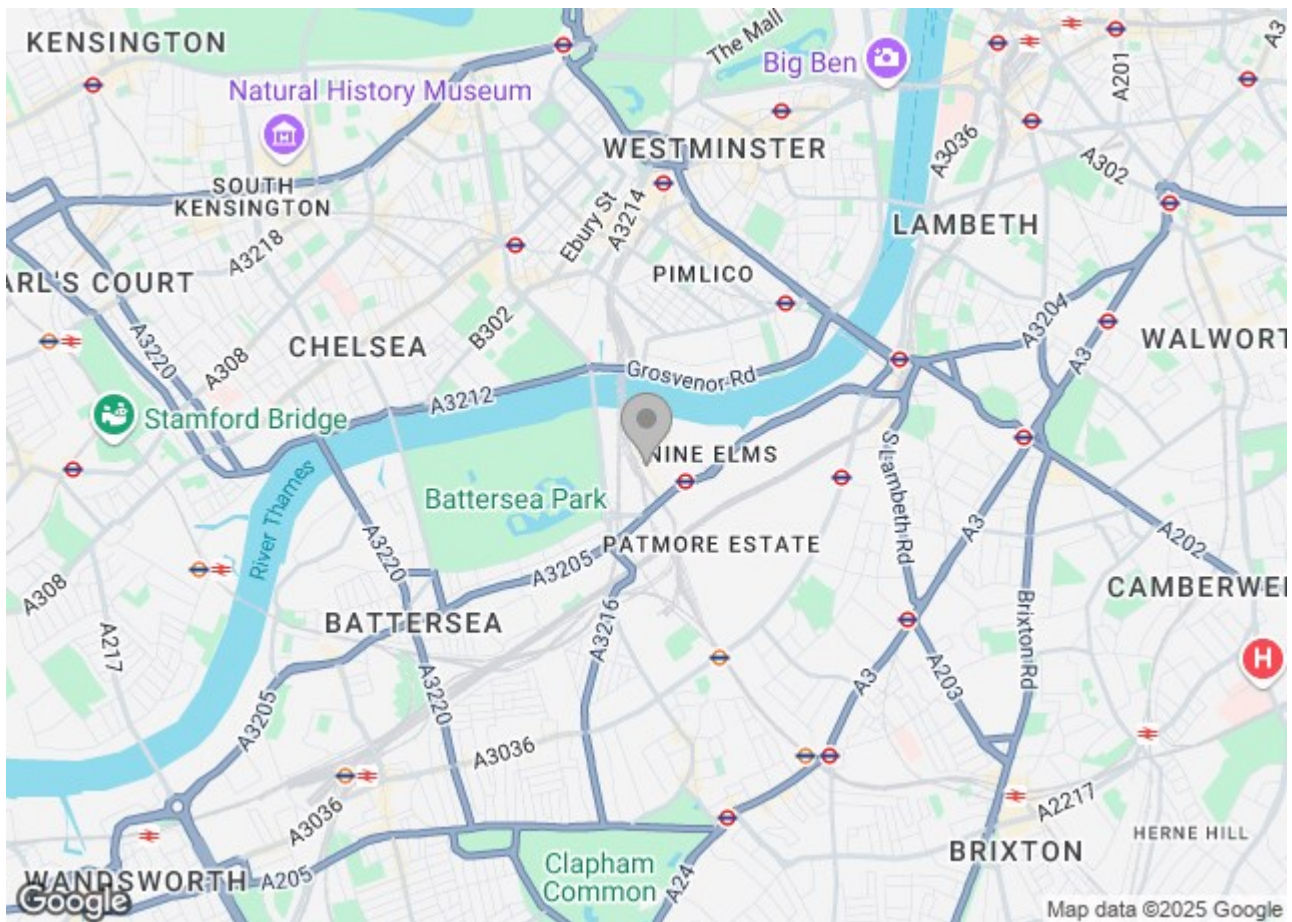
Electricity supply – Mains | Cold Water supply – Mains | Sewerage – Mains | Heating – Communal | Internet: FTTP

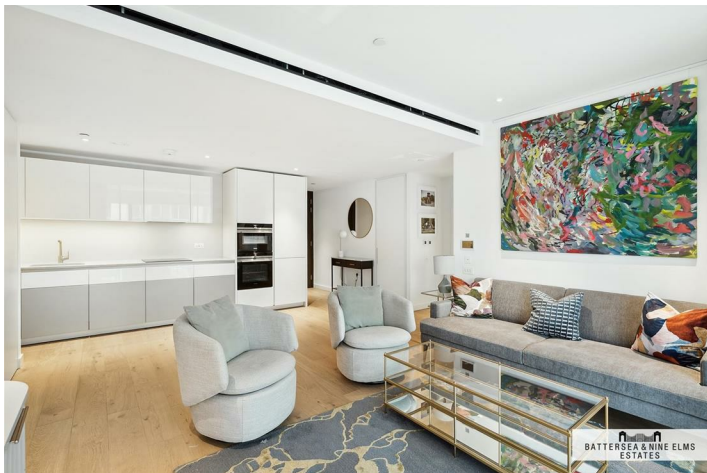
To check broadband and mobile phone coverage please visit Ofcom.
To check planning permission please visit Wandsworth Council Website: Planning & Building Control

10 Electric Boulevard London



- 24 Hour Concierge
- Private Balcony
- Residents gym (photo of gym is CGI)
- Residents lounge, bar and work stations
- Dishwasher & combination washer dryer
- Riverside location

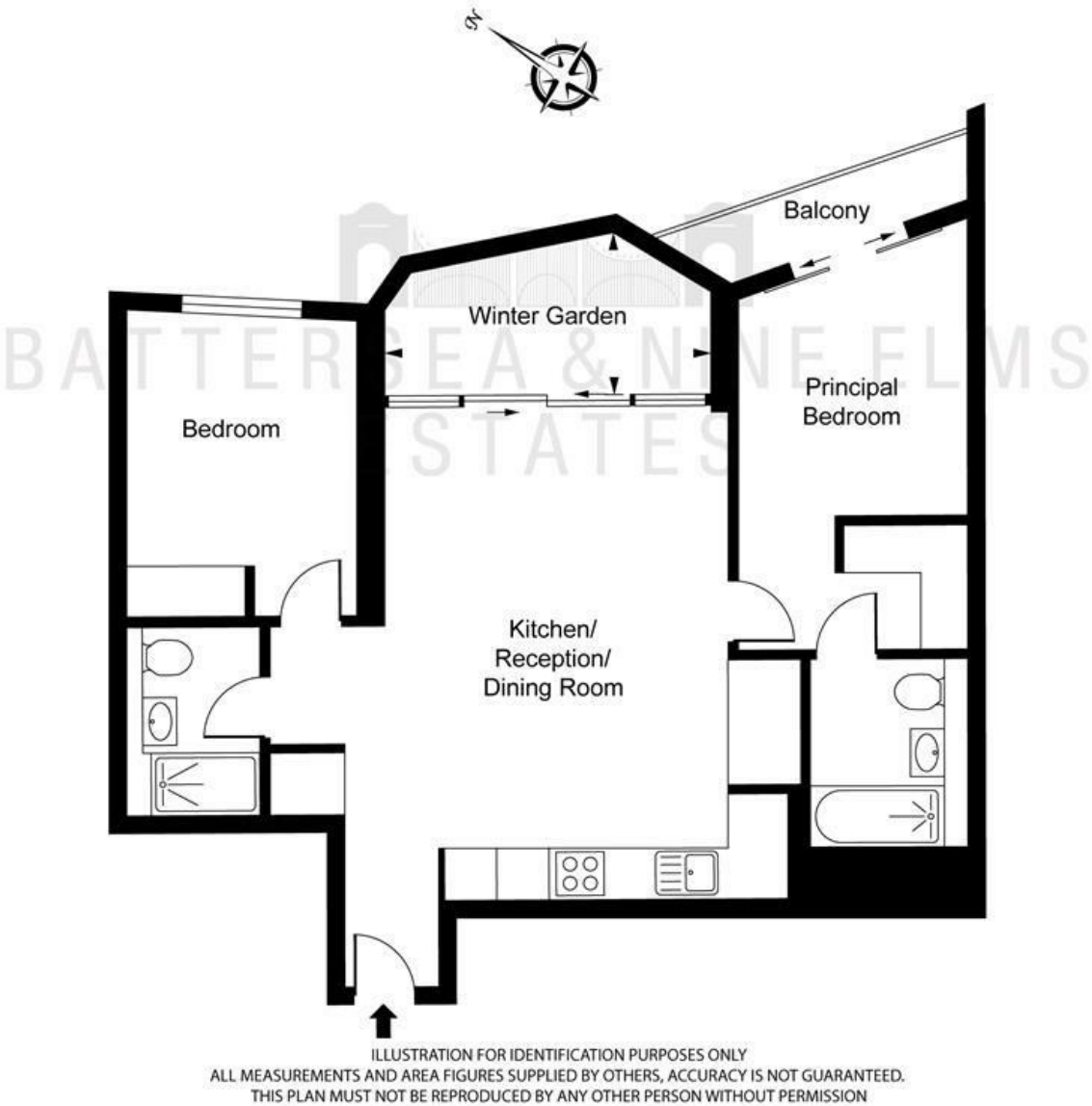




Oakley House,
Electric Boulevard, SW11

Net Saleable Internal Area
72.1 sq m / 776 sq ft
Winter Garden
10.4 sq m / 112 sq ft

Total Areas Shown on Plan
82.5 sq m / 888 sq ft



These particulars, whilst believed to be accurate are set out as a general outline only for guidance and do not constitute any part of an offer or contract. Intending purchasers should not rely on them as statements of representation of fact, but must satisfy themselves by inspection or otherwise as to their accuracy. No person in this firm's employment has the authority to make or give any representation or warranty in respect of the property.

