



3 Lanchester Way London

£800 Per Week

This two bedroom, two bath apartment offers high specification design and finish.

Situated in the Lexington Gardens Development, this well appointed property features oak style wood floor with underfloor heating and a private balcony.

Residents will also benefit from the 24 hour concierge service, a residents gym & media lounge.

Council Tax Band: Wandsworth - F

Minimum contract: 12 months

Change of contract fee: £50 including VAT

Lift access

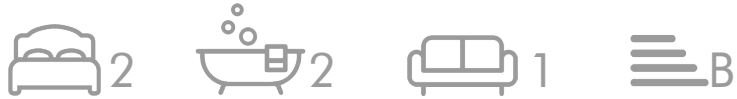
Holding Deposit - £800 (1 weeks rent, subject to agreed offer)

Electricity supply – Mains | Cold Water supply – Mains | Sewerage – Mains | Heating – Communal | Internet - FTTP

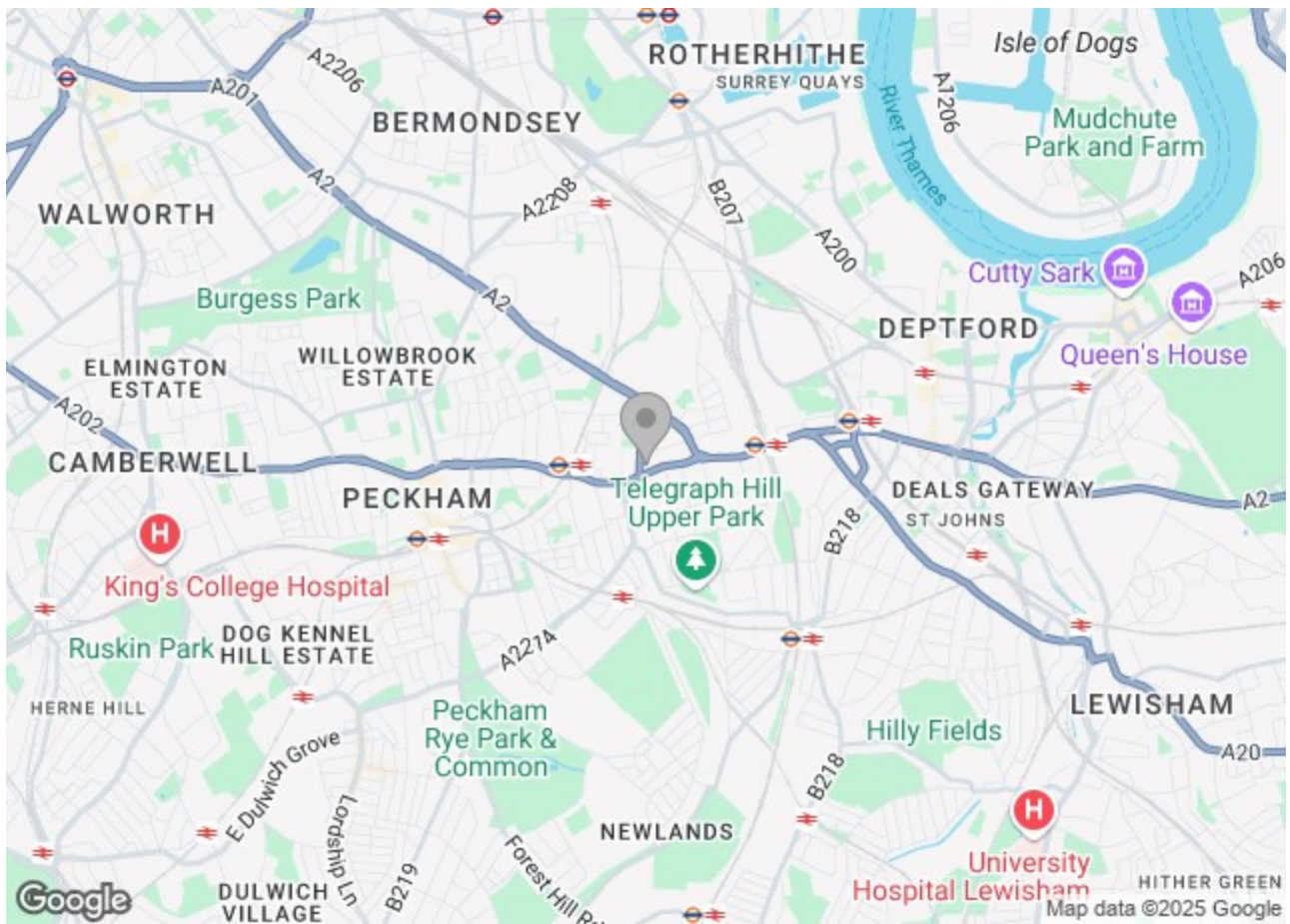
To check broadband and mobile phone coverage please visit Ofcom.

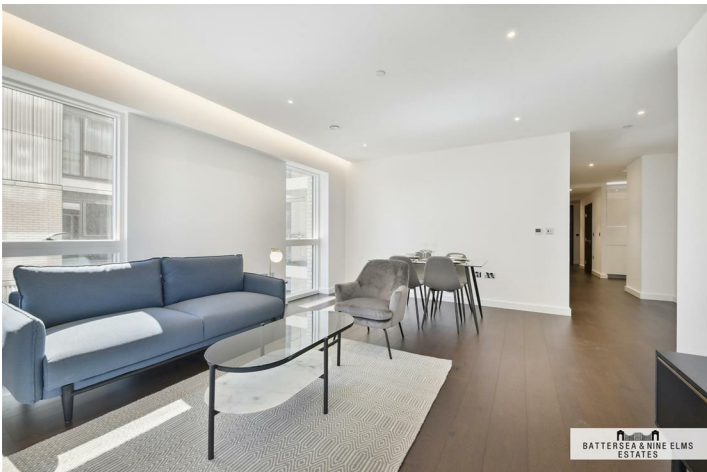
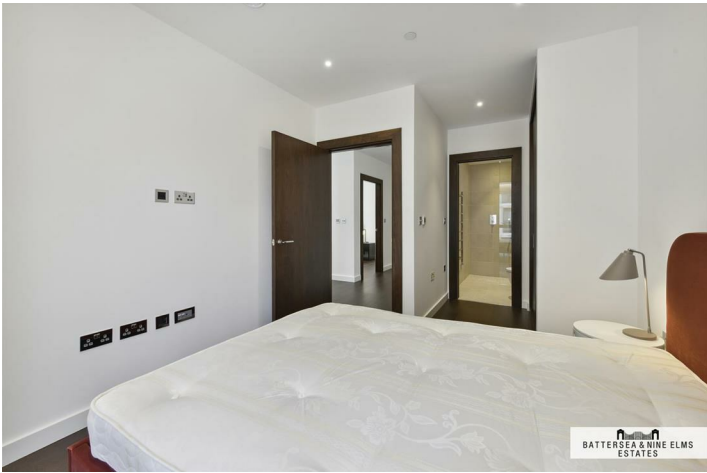
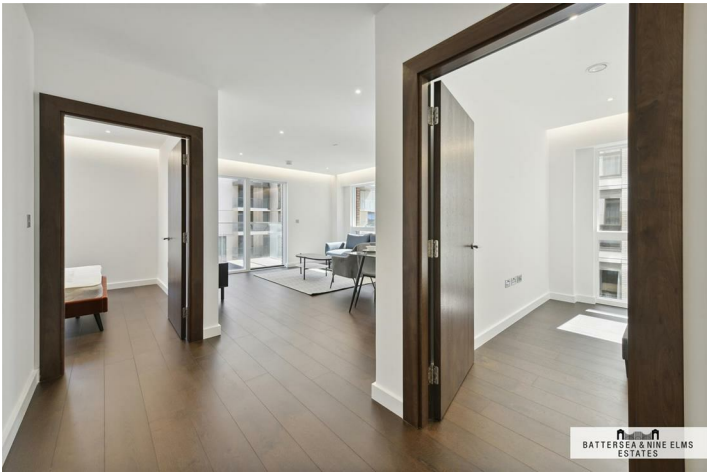
To check planning permission please visit Wandsworth Council Website, Planning & Building Control

3 Lanchester Way London



- 24 hour concierge
- Private balcony
- Media lounge
- Residents gym





Floor Plan



These particulars, whilst believed to be accurate are set out as a general outline only for guidance and do not constitute any part of an offer or contract. Intending purchasers should not rely on them as statements of representation of fact, but must satisfy themselves by inspection or otherwise as to their accuracy. No person in this firm's employment has the authority to make or give any representation or warranty in respect of the property.

Energy Efficiency Rating			Environmental Impact (CO ₂) Rating		
	Current	Potential		Current	Potential
Very energy efficient - lower running costs			Very environmentally friendly - lower CO ₂ emissions		
(02 plus) A	87	87	(02 plus) A		
(81-81) B			(81-81) B		
(69-80) C			(69-80) C		
(55-68) D			(55-68) D		
(39-54) E			(39-54) E		
(21-38) F			(21-38) F		
(1-20) G			(1-20) G		
Not energy efficient - higher running costs			Not environmentally friendly - higher CO ₂ emissions		
England & Wales			England & Wales		
EU Directive 2002/91/EC			EU Directive 2002/91/EC		