

## Riverlight Quay London

**£660 Per Week**

A larger than average one bedroom apartment set within the exclusive Riverlight development. Stunning design, central location and world-class facilities.

Riverlight has all the ingredients of the perfect London development. Set at the heart of the eagerly anticipated cluster of developments on the waterfront, the architects behind Riverlight have planned an oasis of landscaped communal gardens and open space. Together with the excellent existing transport links from Vauxhall and the future Nine Elms Tube station, Riverlight presents an opportunity to make the most of what London has to offer.

Council Tax Band: Wandsworth - E  
Minimum contract: 12 months  
Change of contract fee: £50 including VAT  
Lift access | Cladding: EWS1 Certificate available  
Holding Deposit - £660 (1 weeks rent, subject to agreed offer)

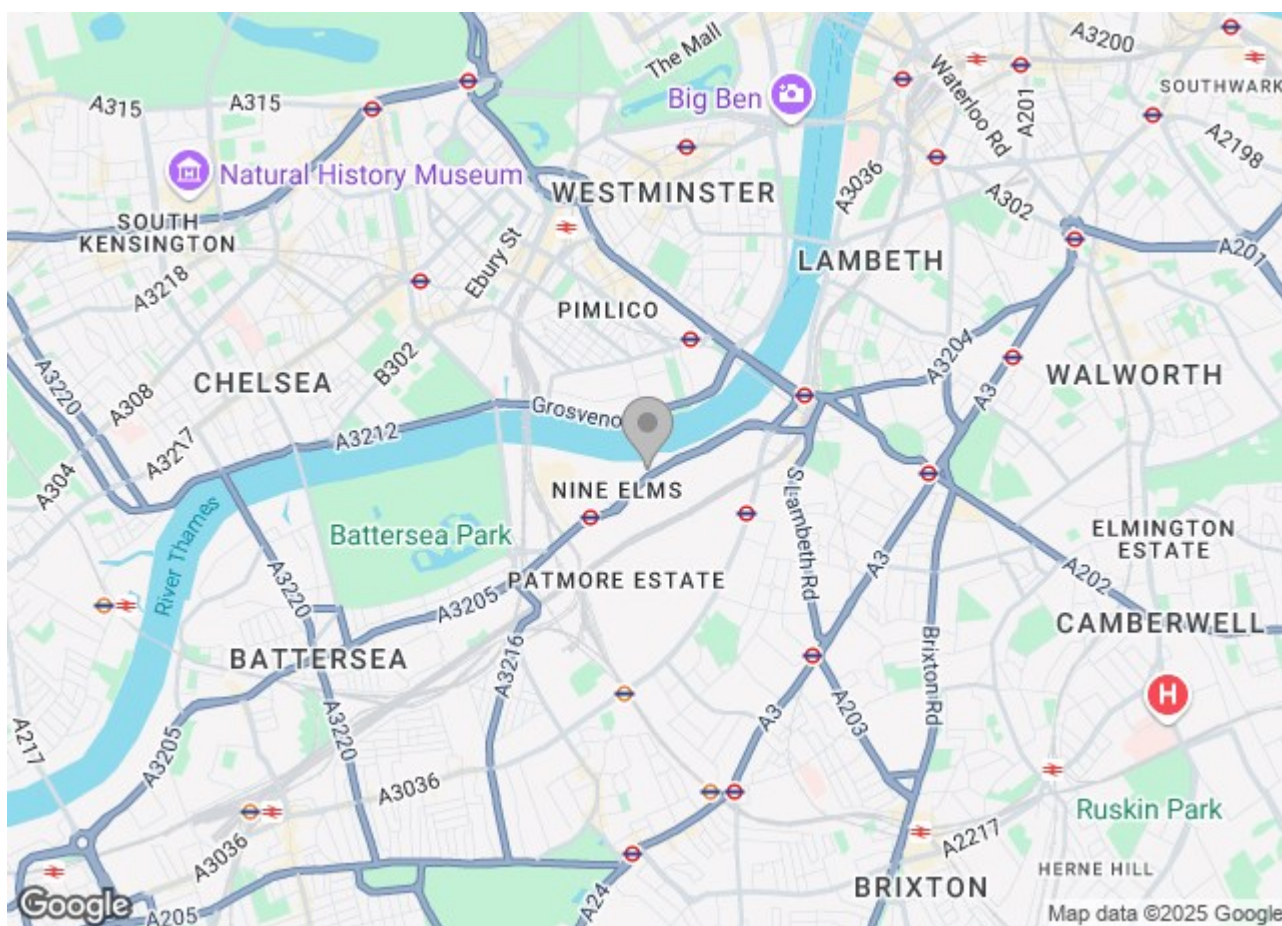
Electricity supply – Mains | Cold Water supply – Mains | Sewerage – Mains | Hot water, heating & comfort cooling – Mains |  
Internet: Fibre | Parking available by separate negotiation | Lift access

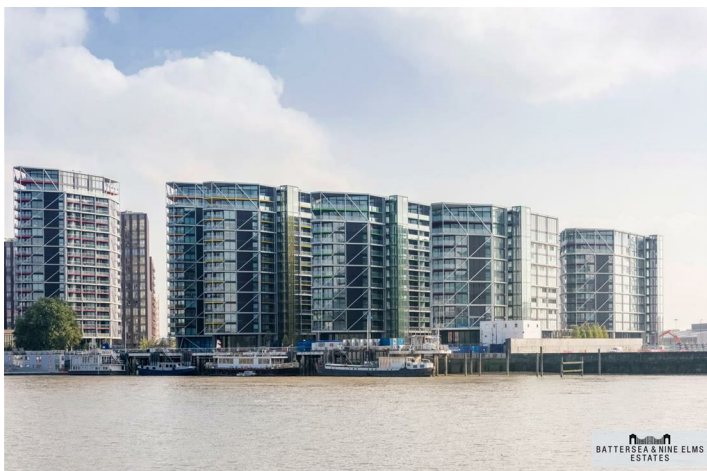
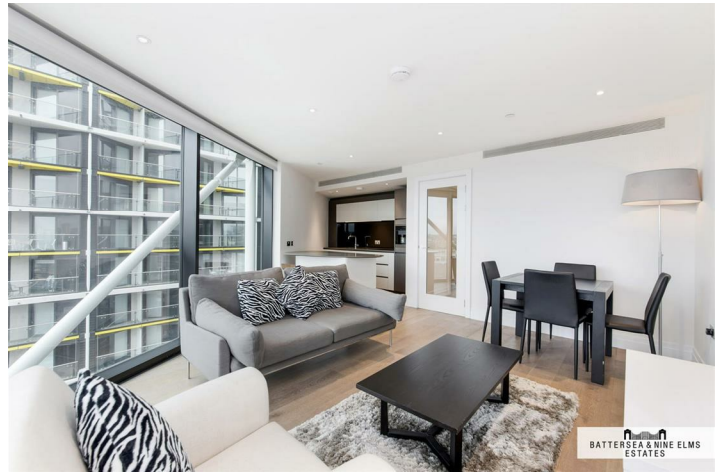
To check broadband and mobile phone coverage please visit Ofcom.  
To check planning permission please visit Wandsworth Council Website Planning & Building Control

# Riverlight Quay London

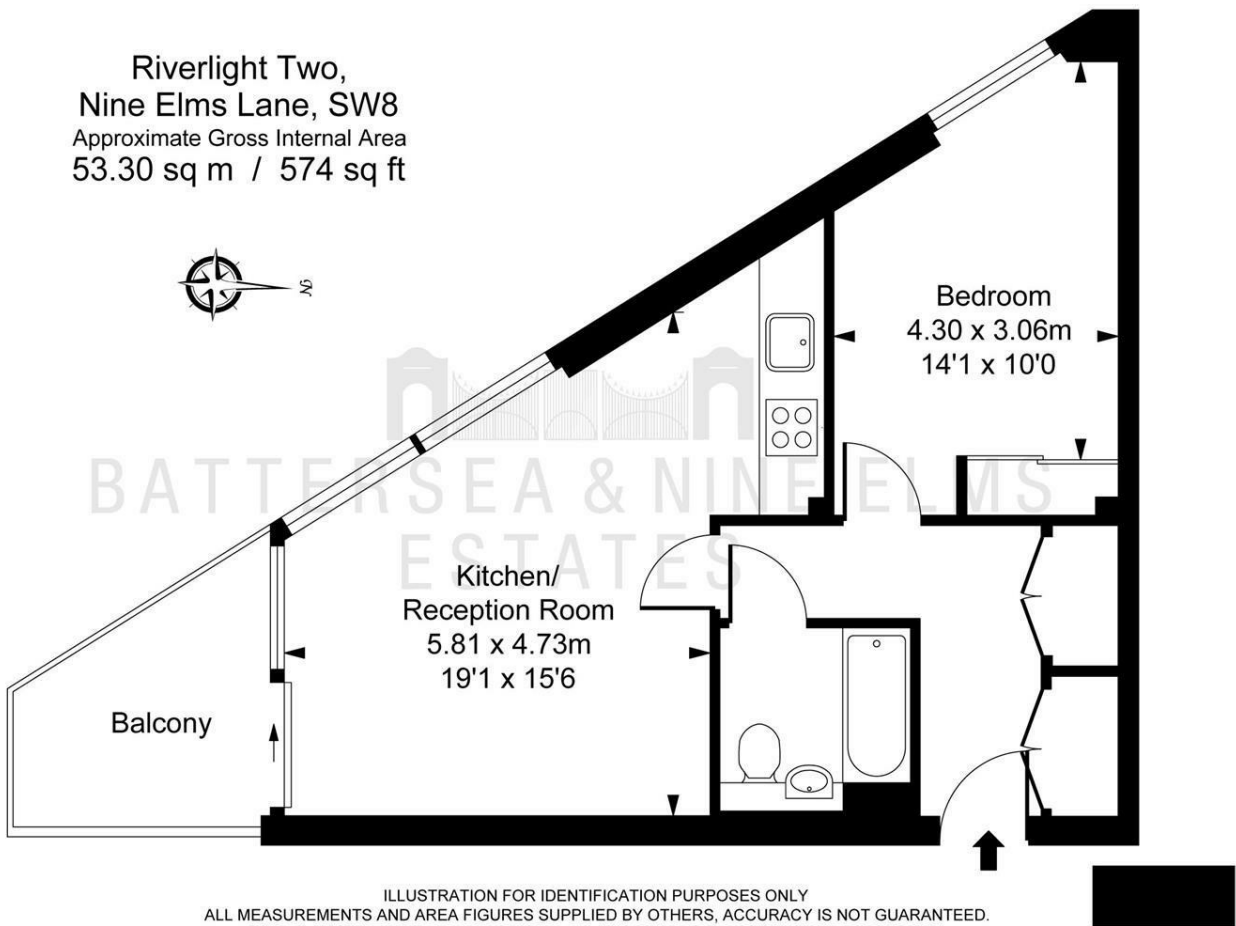


- One double bedroom
- 24 Hour concierge
- Swimming pool & gym
- Comfort cooling
- Residents cinema
- Golf simulator





Floor Plan



These particulars, whilst believed to be accurate are set out as a general outline only for guidance and do not constitute any part of an offer or contract. Intending purchasers should not rely on them as statements of representation of fact, but must satisfy themselves by inspection or otherwise as to their accuracy. No person in this firm's employment has the authority to make or give any representation or warranty in respect of the property.

