



1 Viaduct Gardens London

£775 Per Week

A spacious one bedroom apartment set within the desirable Embassy Gardens development, offering an abundance of space and benefitting from its own private terrace.

Situated a short walk to the River Thames, residents can take advantage of the excellent transport links from Vauxhall Station and Northern Line tube from Nine Elms.

On site communal facilities include a 24 hour concierge, indoor and outdoor swimming pools, residents gym, business lounge with meeting rooms and private cinema.

Council Tax Band: Wandsworth - E
Minimum contract: 12 months
Change of contract fee: £50 including VAT
Lift access | Cladding: EWS1 Certificate available
Holding Deposit - £775 (1 weeks rent, subject to agreed offer)

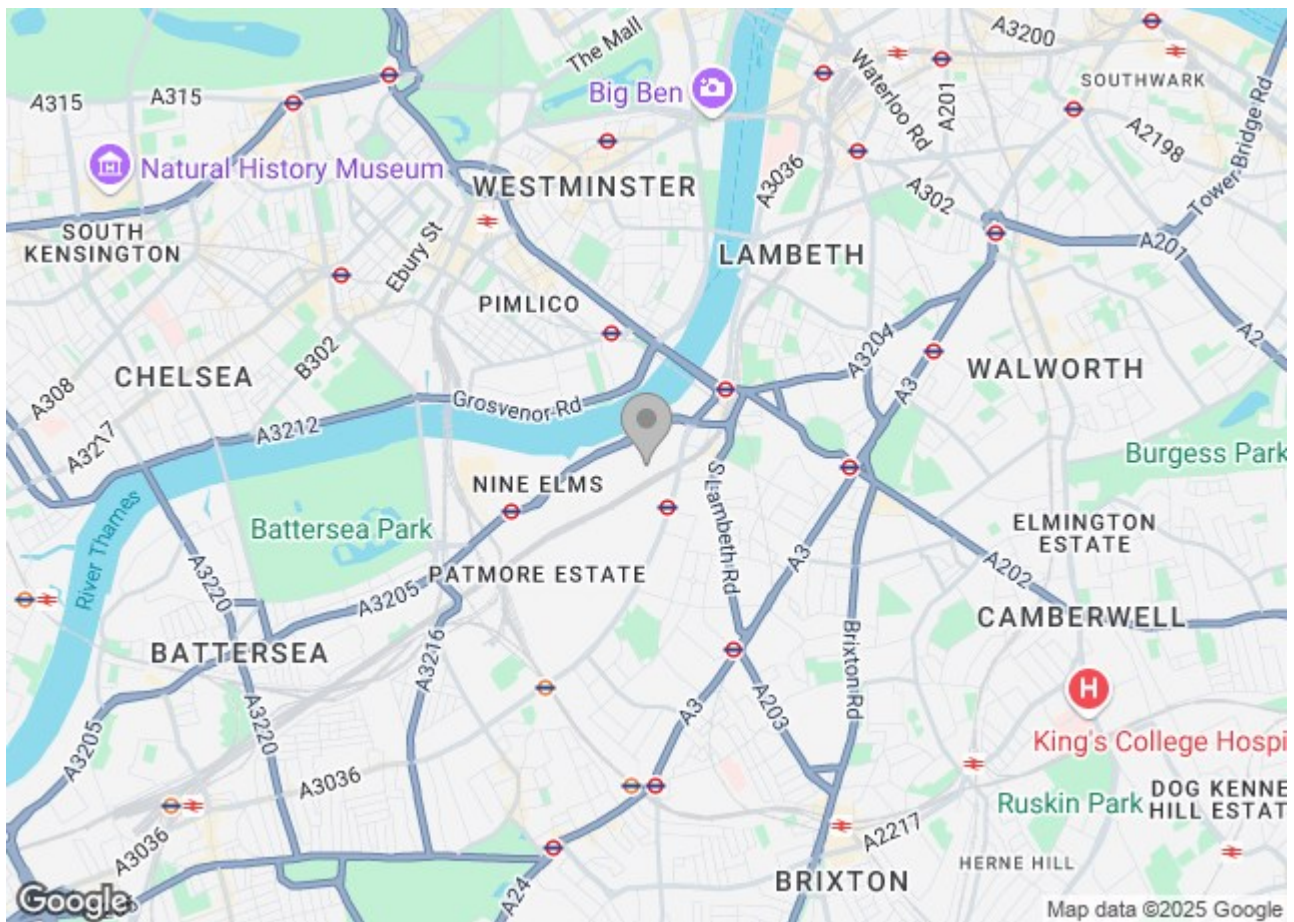
Electricity supply – Mains | Cold Water supply – Mains | Sewerage – Mains | Hot water, heating - District Communal | Internet: FTTP

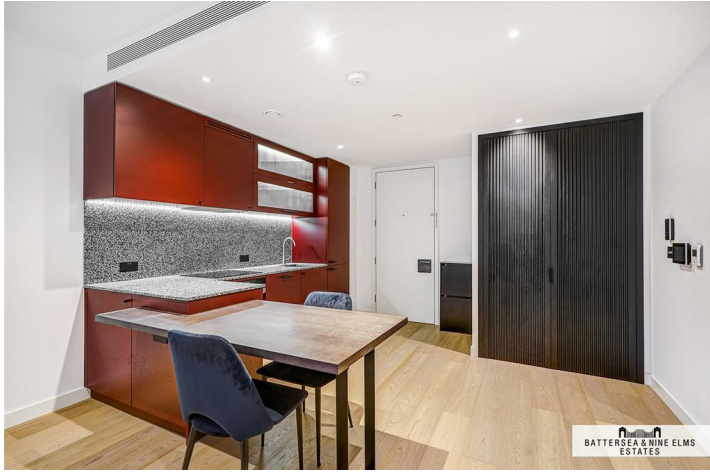
To check broadband and mobile phone coverage please visit Ofcom.
To check planning permission please visit Wandsworth Council Website. Planning & Building Control

1 Viaduct Gardens London



- Large One Bedroom Property
- Terrace
- Residents Gym
- 24 Hour concierge





Legacy Building, SW11
Approximate Gross Internal Area
50.4 sq m / 542 sq ft

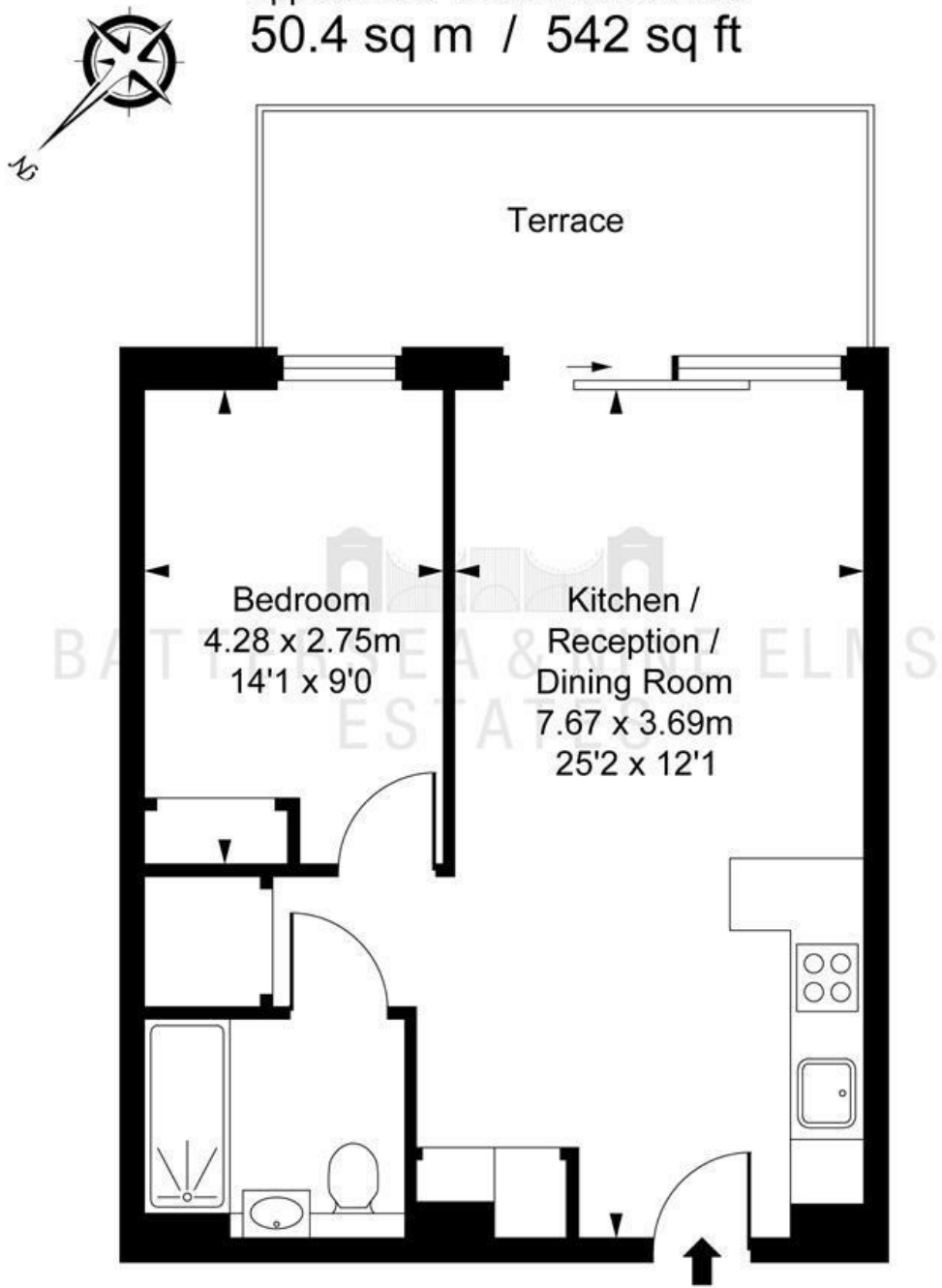


ILLUSTRATION FOR IDENTIFICATION PURPOSES ONLY
ALL MEASUREMENTS AND AREA FIGURES SUPPLIED BY OTHERS, ACCURACY IS NOT GUARANTEED.
THIS PLAN MUST NOT BE REPRODUCED BY ANY OTHER PERSON WITHOUT PERMISSION

These particulars, whilst believed to be accurate are set out as a general outline only for guidance and do not constitute any part of an offer or contract. Intending purchasers should not rely on them as statements of representation of fact, but must satisfy themselves by inspection or otherwise as to their accuracy. No person in this firm's employment has the authority to make or give any representation or warranty in respect of the property.

