

## 30 Ponton Road London

**£595 Per Week**

A beautifully finished, spacious one bedroom apartment with far reaching views. Madeira Tower is set within The Residence development situated only moments from the River and a short walk to Nine Elms and Vauxhall Stations. The development offers a 24 hour concierge, residents gym, media room and meeting room.

Residents will also benefit from the wonderful onsite amenities including the gym, yoga room, private cinema and meeting rooms.

Council Tax Band: Wandsworth - E  
Minimum contract: 12 months  
Change of contract fee: £50 including VAT  
Lift access | Cladding: EWS1 Certificate available  
Holding Deposit - £595 (1 weeks rent, subject to agreed offer)

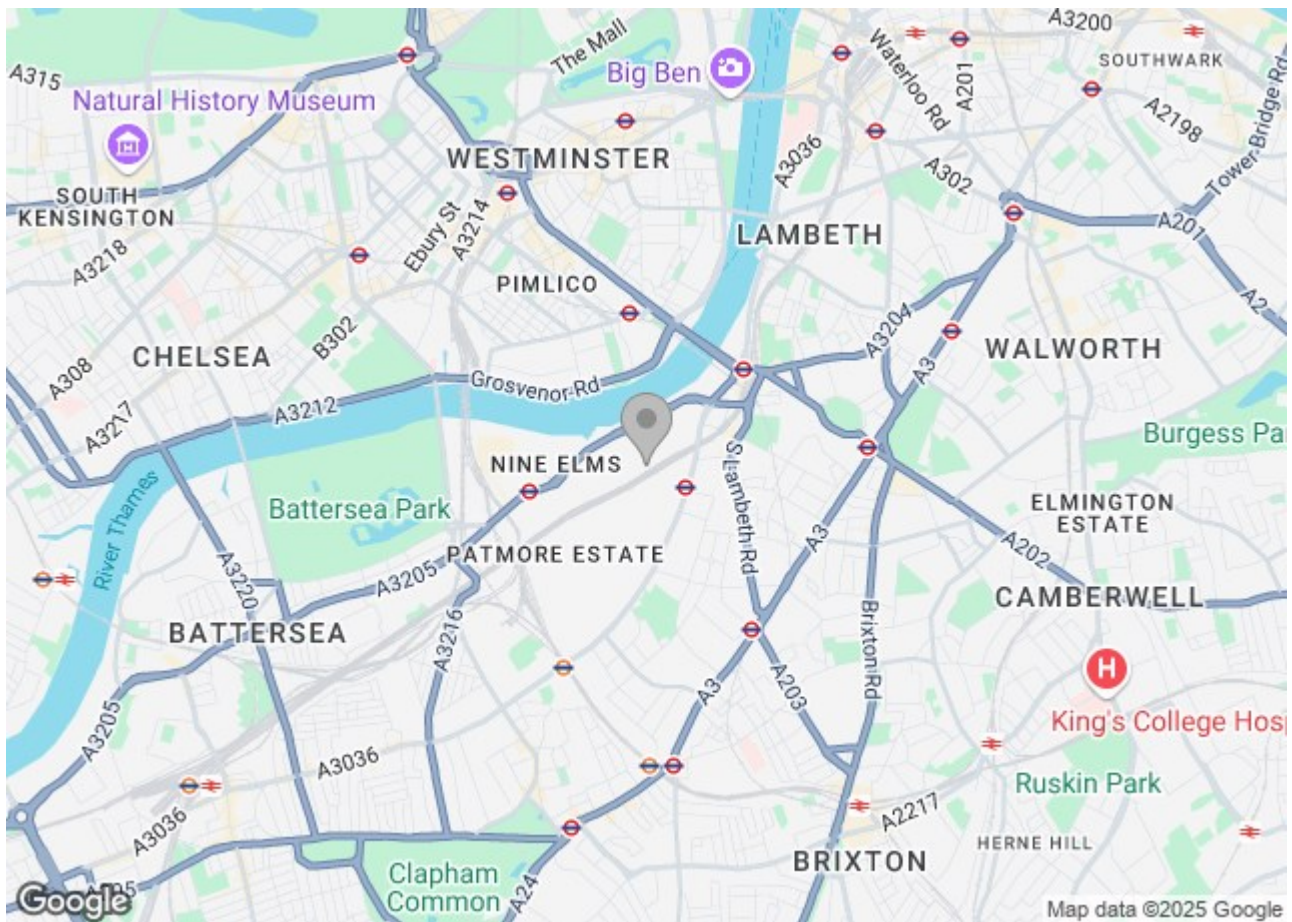
Electricity supply – Mains | Cold Water supply – Mains | Sewerage – Mains | Hot water, heating – Communal | Internet: Ftp | Parking available by separate negotiation |

To check broadband and mobile phone coverage please visit Ofcom.  
To check planning permission please visit Wandsworth Council Website, Planning & Building Control

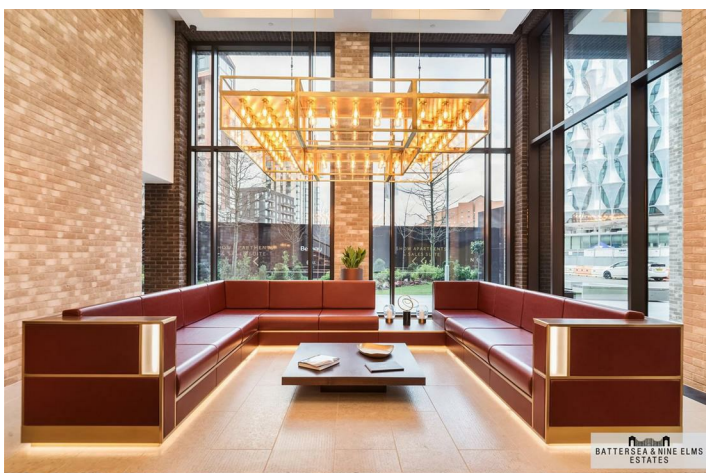
## 30 Ponton Road London



- One Bedroom
- 24 Hour concierge
- Dishwasher & combination washer/ dryer
- Underfloor heating
- Residents gym
- Meeting room
- Zone 1 transport links







Madeira Tower,  
The Residence,  
Ponton Road, SW8  
Approximate Gross Internal Area  
50.00 sq m / 538 sq ft

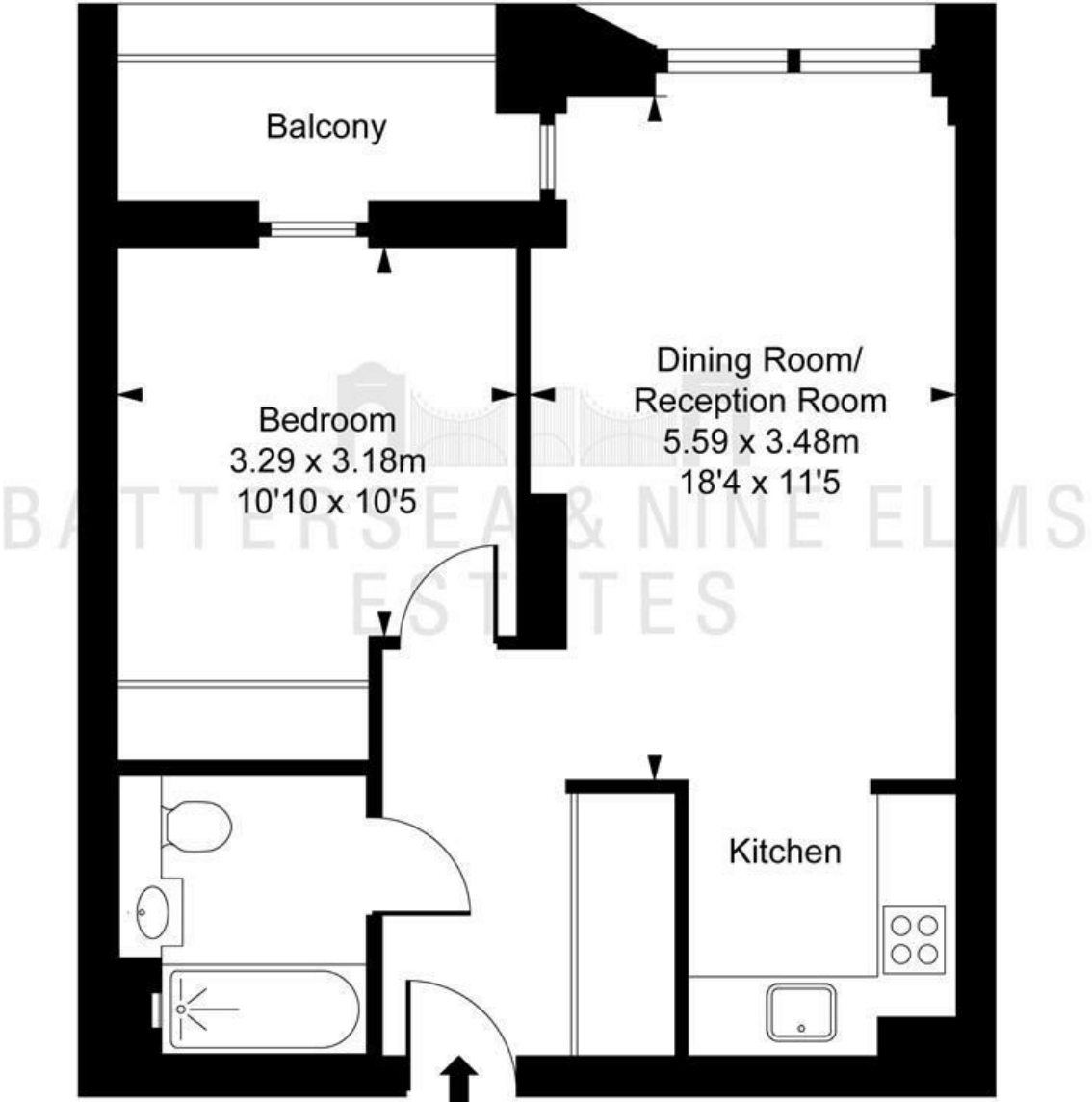


ILLUSTRATION FOR IDENTIFICATION PURPOSES ONLY  
ALL MEASUREMENTS AND AREA FIGURES SUPPLIED BY OTHERS, ACCURACY IS NOT GUARANTEED.  
THIS PLAN MUST NOT BE REPRODUCED BY ANY OTHER PERSON WITHOUT PERMISSION

These particulars, whilst believed to be accurate are set out as a general outline only for guidance and do not constitute any part of an offer or contract. Intending purchasers should not rely on them as statements of representation of fact, but must satisfy themselves by inspection or otherwise as to their accuracy. No person in this firm's employment has the authority to make or give any representation or warranty in respect of the property.

| Energy Efficiency Rating |           | Environmental Impact (CO <sub>2</sub> ) Rating |           |
|--------------------------|-----------|--|-----------|
| Current                  | Potential | Current  | Potential |
|                          |           |  |           |
| England & Wales          |           | England & Wales                                |           |
| EU Directive 2002/91/EC  |           | EU Directive 2002/91/EC                        |           |