

## Fountain Park Way London

**£850 Per Week**

A generously sized two-bedroom, two-bathroom apartment, ideally located just moments from White City and Wood Lane Underground Stations, as well as the renowned Westfield Shopping Centre. The property offers an abundance of natural light and briefly comprises of; two double bedrooms with the main bedroom benefiting from a private balcony, en-suite and storage space and the second bedroom fitted with built in wardrobes.

There is a stunning open plan living/kitchen area with access a second balcony. A further three piece bathroom suite and storage completes the living accommodation.

Residents will enjoy access to exceptional communal facilities, including a 24-hour concierge service, a swimming pool, and a fully equipped gym. Additionally, there is a private residents' lounge and meeting room for ultimate convenience and relaxation.

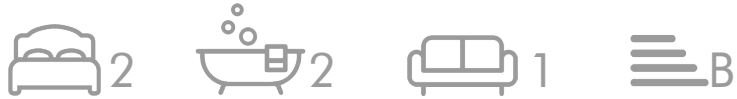
Council Hammersmith & Fulham: Band F  
Minimum contract: 12 months  
Change of contract fee: £50 including VAT  
Lift access | Cladding: EWS1 Certificate available  
Holding Deposit - £850 (1 weeks rent, subject to agreed offer)

Electricity supply – Mains | Cold Water supply – Mains | Sewerage – Mains | Hot water, heating & comfort cooling – Mains | Internet: Fibre |

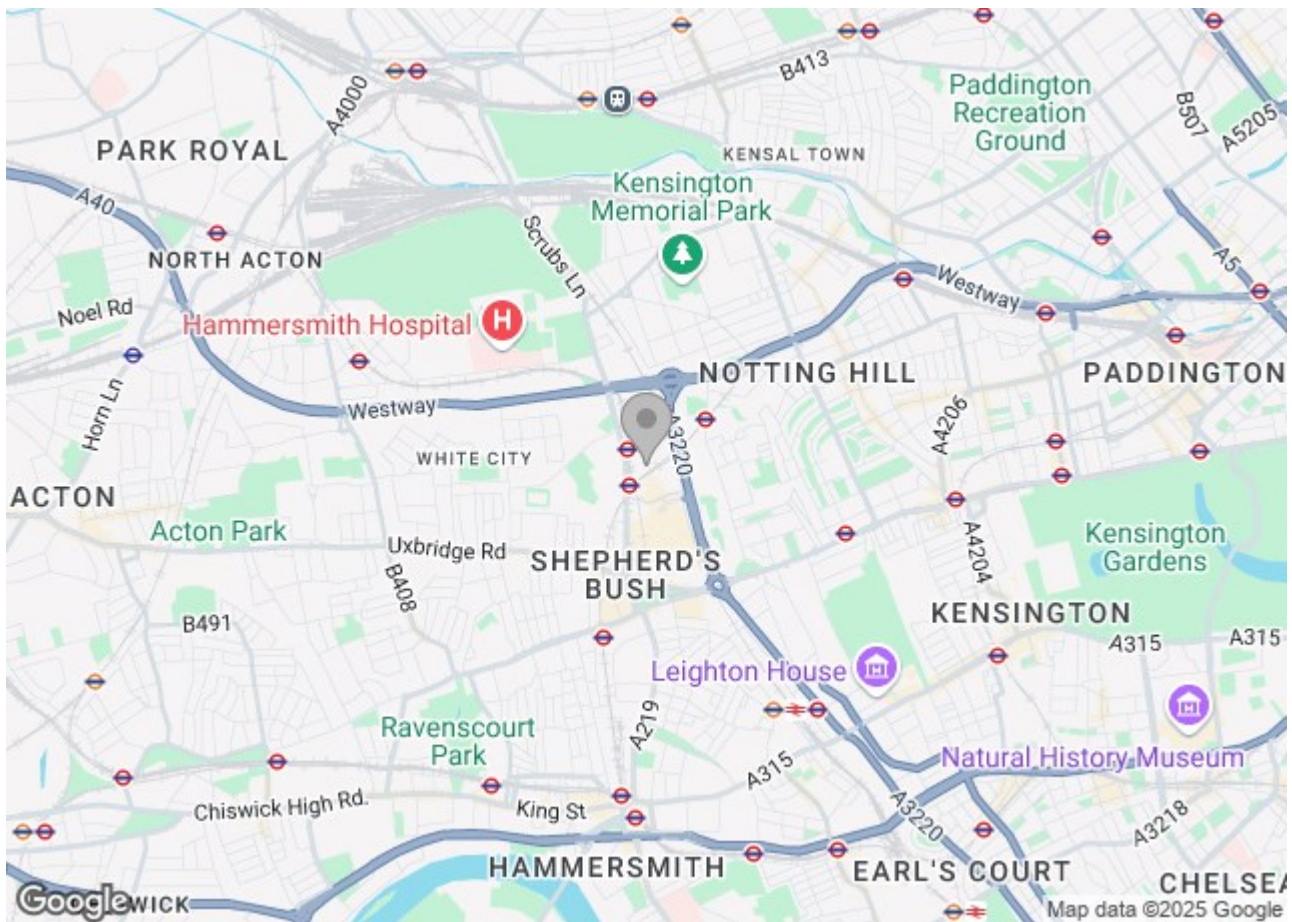
To check broadband and mobile phone coverage please visit Ofcom.

To check planning permission please visit Hammersmith and Fulham Council Website, Planning & Building Control

# Fountain Park Way London



- Two double bedrooms
- Two bathrooms
- Two Balconies
- Excellent transport links
- 24 Hour Concierge







Belvedere Apartments,  
White City, W12

Approximate Gross Internal Area  
87.30 sq m / 940 sq ft

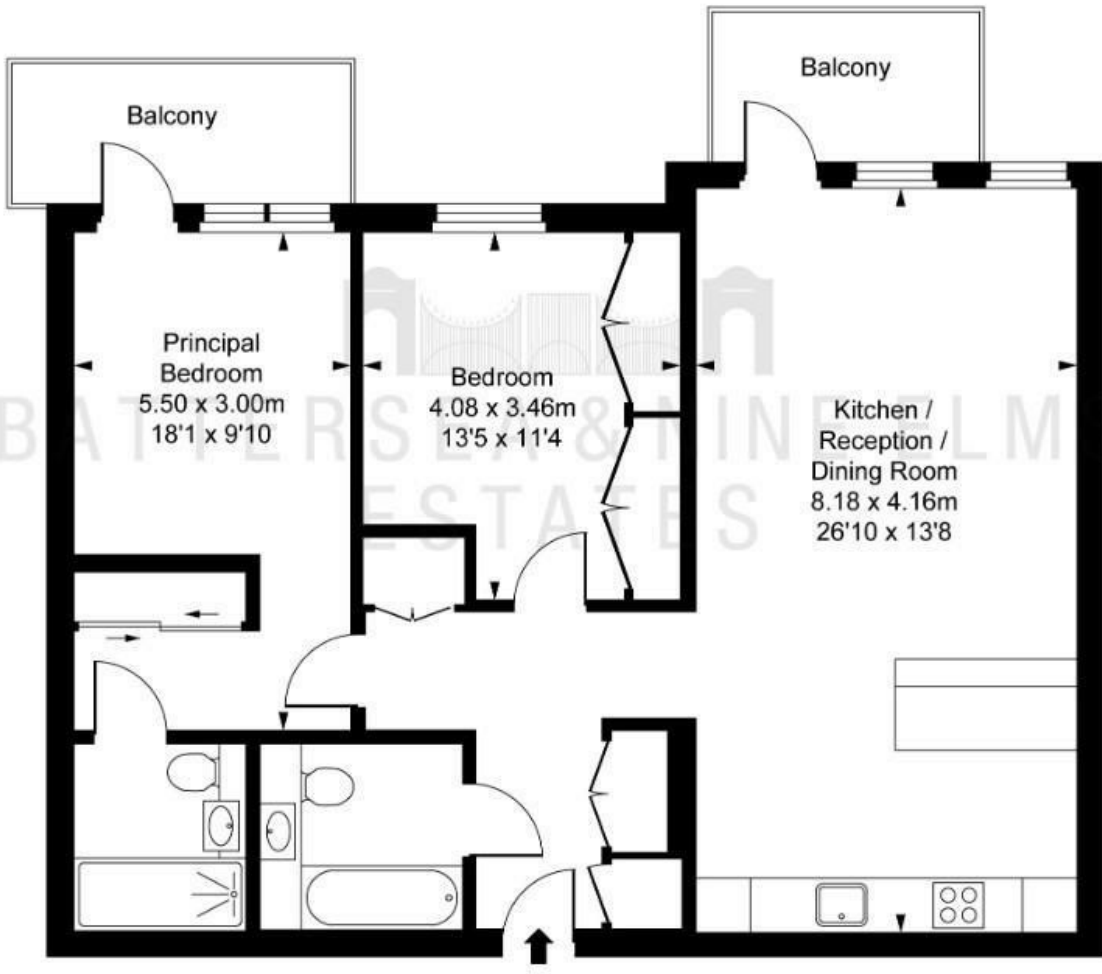


ILLUSTRATION FOR IDENTIFICATION PURPOSES ONLY  
ALL MEASUREMENTS AND AREA FIGURES SUPPLIED BY OTHERS, ACCURACY IS NOT GUARANTEED.  
THIS PLAN MUST NOT BE REPRODUCED BY ANY OTHER PERSON WITHOUT PERMISSION

These particulars, whilst believed to be accurate are set out as a general outline only for guidance and do not constitute any part of an offer or contract. Intending purchasers should not rely on them as statements of representation of fact, but must satisfy themselves by inspection or otherwise as to their accuracy. No person in this firm's employment has the authority to make or give any representation or warranty in respect of the property.

