



Legacy Building, Embassy Gardens

Asking Price £1,300,000

A beautiful two bedroom apartment set in the sought after Legacy Building within the exclusive Embassy Gardens development. The apartment features two double bedrooms and floor to ceiling windows. The spacious open plan living and kitchen area boasts oak flooring and wonderful river views.

Residents can benefit from the amazing on site amenities including the swimming pool, gym and spa and private cinema. The development is ideally located close to Vauxhall station and other zone one transport links.

Approximately 984 years remaining on lease
Ground rent amount: Ask agent
Ground rent review period: Ask agent
Service charge amount: approx. Ask agent
Service charge review period: N/A
Council tax band: F Wandsworth

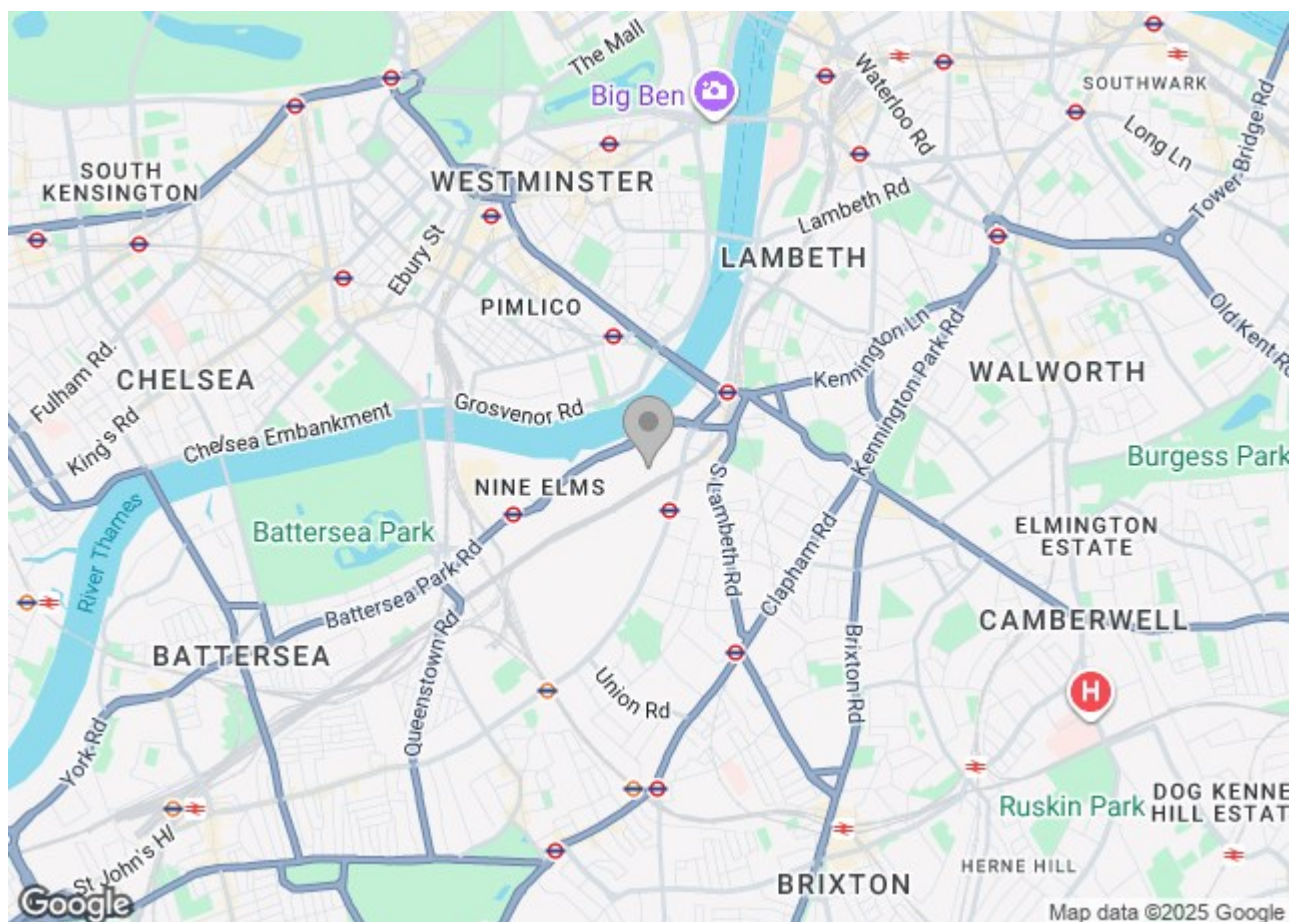
Electricity supply – Mains | Heating & Cooling – Communal | Water supply – Mains | Sewerage – Mains | Internet: FTTP
| Lift Access | Valet Parking | Cladding: EWS1 Certificate available

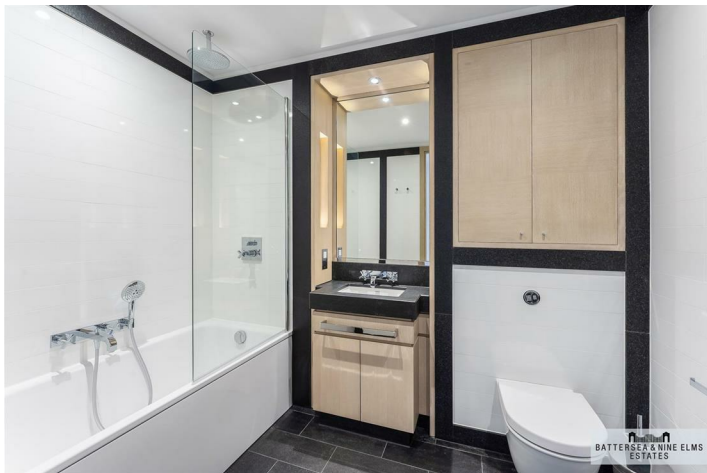
To check broadband and mobile phone coverage please visit Ofcom
To check planning permission please visit Wandsworth Council Website, Planning & Building Control

1 Viaduct Gardens London

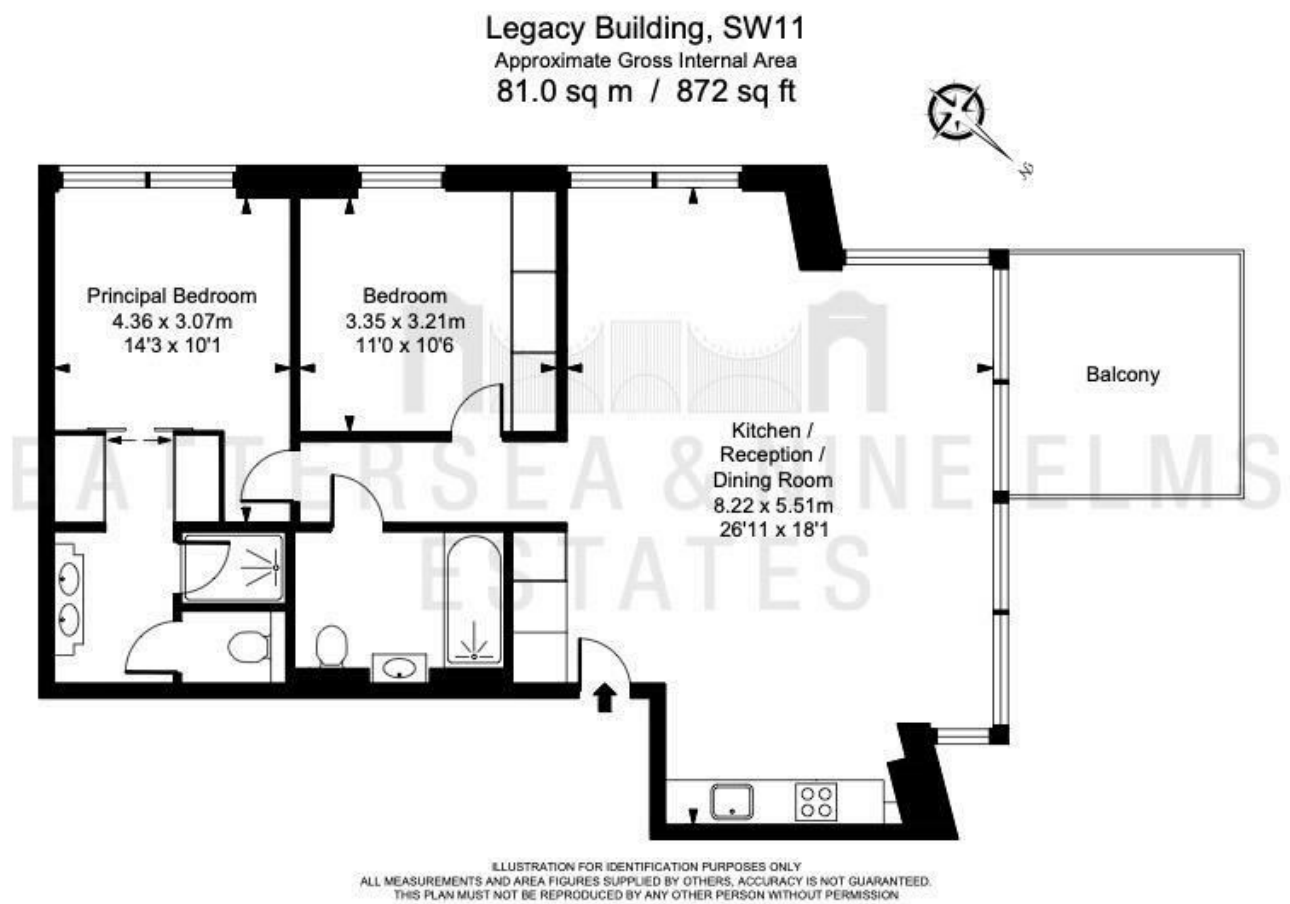


- Two bedrooms
- Excellent Transport Links
- 24 Hour concierge
- Two bathrooms
- Swimming pool
- *photos from 2020
- Private Balcony
- Gym and Spa





Floor Plan



These particulars, whilst believed to be accurate are set out as a general outline only for guidance and do not constitute any part of an offer or contract. Intending purchasers should not rely on them as statements of representation of fact, but must satisfy themselves by inspection or otherwise as to their accuracy. No person in this firm's employment has the authority to make or give any representation or warranty in respect of the property.

