

## 4 Charles Clowes Walk London

**£1,130 Per Week**

An elegant Manhattan loft-style development of individually interior designed two bed, two bath contemporary apartment with far-reaching views from private balconies and luxurious amenities situated in the heart of Nine Elms, London's newest and existing riverside district. Residents will be able to enjoy the use of on-site gym, media room, board room, secure underground parking as well as Thornes House private landscaped podium gardens to unwind and relax.

Thornes House is ideally positioned between two new Northern Line underground stations (2 minutes and 45 seconds away from Nine Elms station) adding to the extensive transport links including tree lined footpaths, dedicated cycle lanes, Clipper river service, local buses and the Pimlico bridge providing direct access into the neighbouring Royal Borough's of Kensington and Chelsea.

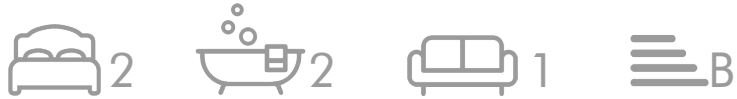
**\*\*Please note, these photos are of the marketing unit so will differ slightly - viewing recommended\*\***

Minimum contract: 12 months  
Council tax band : Wandsworth - F  
Change of contract fee: £50 including VAT  
Lift access  
Holding Deposit - £1,130 (1 weeks rent, subject to agreed offer)

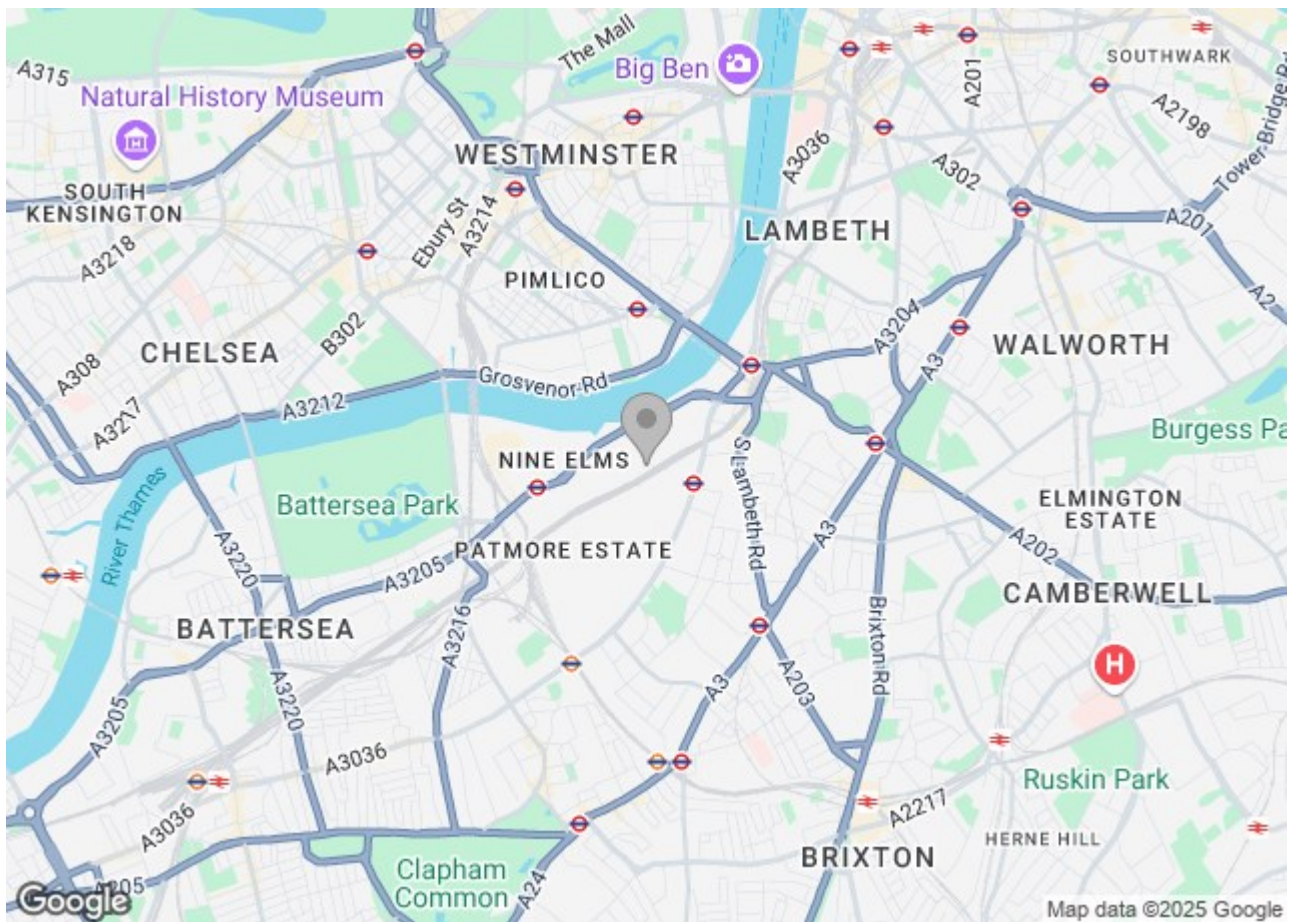
Electricity supply – Mains | Cold Water supply – Mains | Sewerage – Mains | Heating – Communal | Internet: Fttp

To check broadband and mobile phone coverage please visit Ofcom.

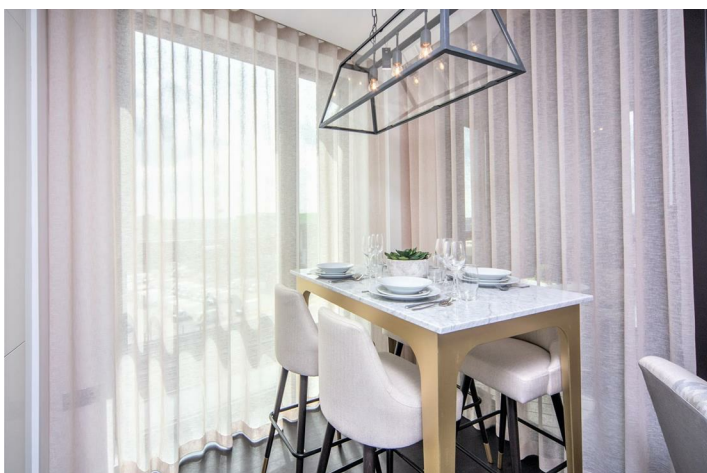
## 4 Charles Clowes Walk London



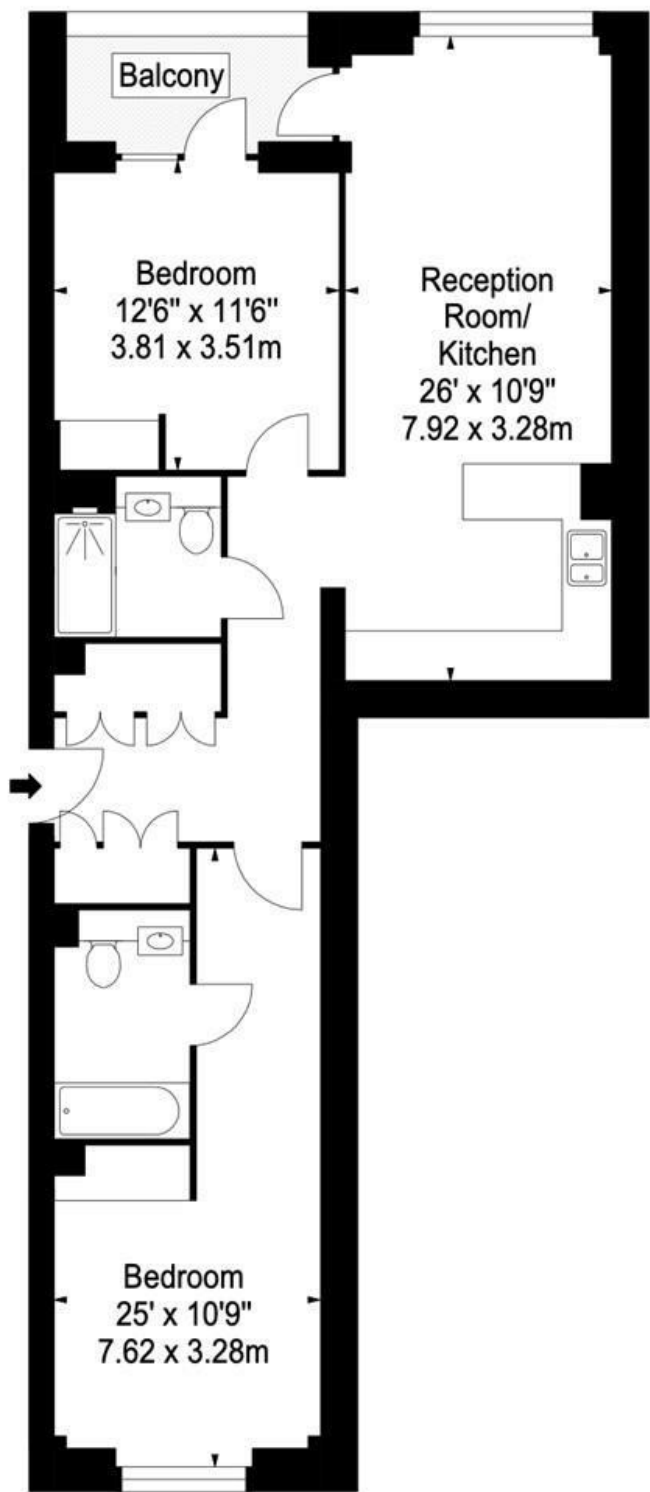
- Two bedrooms and Two Bathrooms
- CCTV
- Video Entry
- Porter
- Parking
- GYM/SPA
- Wifi







Floor Plan



These particulars, whilst believed to be accurate are set out as a general outline only for guidance and do not constitute any part of an offer or contract. Intending purchasers should not rely on them as statements of representation of fact, but must satisfy themselves by inspection or otherwise as to their accuracy. No person in this firm's employment has the authority to make or give any representation or warranty in respect of the property.

