

22 Hanover Square London

£1,500 Per Week

This stunning one bedroom apartment is located within the sought after Mandarin Oriental Hotel in the centre of Mayfair; the exquisite boutique hotel is situated in the heart of London's most exclusive and iconic neighbourhoods. Residents can take advantage of the beautiful Hanover Square just moments from the Hotel. The apartment offers understated luxury and space in an open-plan design with a sitting area bathed in natural light.

Residents will benefit from the dedicated team of full-time Mandarin Oriental trained staff including a 24-hour concierge, valet, maintenance, housekeeping, and security to manage your daily life.

Amenities at the Mandarin Oriental Residences are exceptional. The facilities include a residents' lounge, a sauna and steam room, a state-of-the-art gym, and spa and treatment rooms. A 25-metre heated indoor pool provides year-round swimming, while access to the four of the hotel's fine restaurant and signature bar means round-the-clock culinary excellence.

The spa & wellness area provides the perfect space for guests to enjoy the state of the art facilities.

Council Tax Band: Westminster - F

Minimum contract: 12 months

Change of contract fee: £50 including VAT

Lift access | Holding Deposit - £1,500 (1 weeks rent, subject to agreed offer)

Electricity supply – Mains | Cold Water supply – Mains | Sewerage – Mains | Hot water, heating & comfort cooling – Mains | Internet: Fibre | Parking no | Lift access

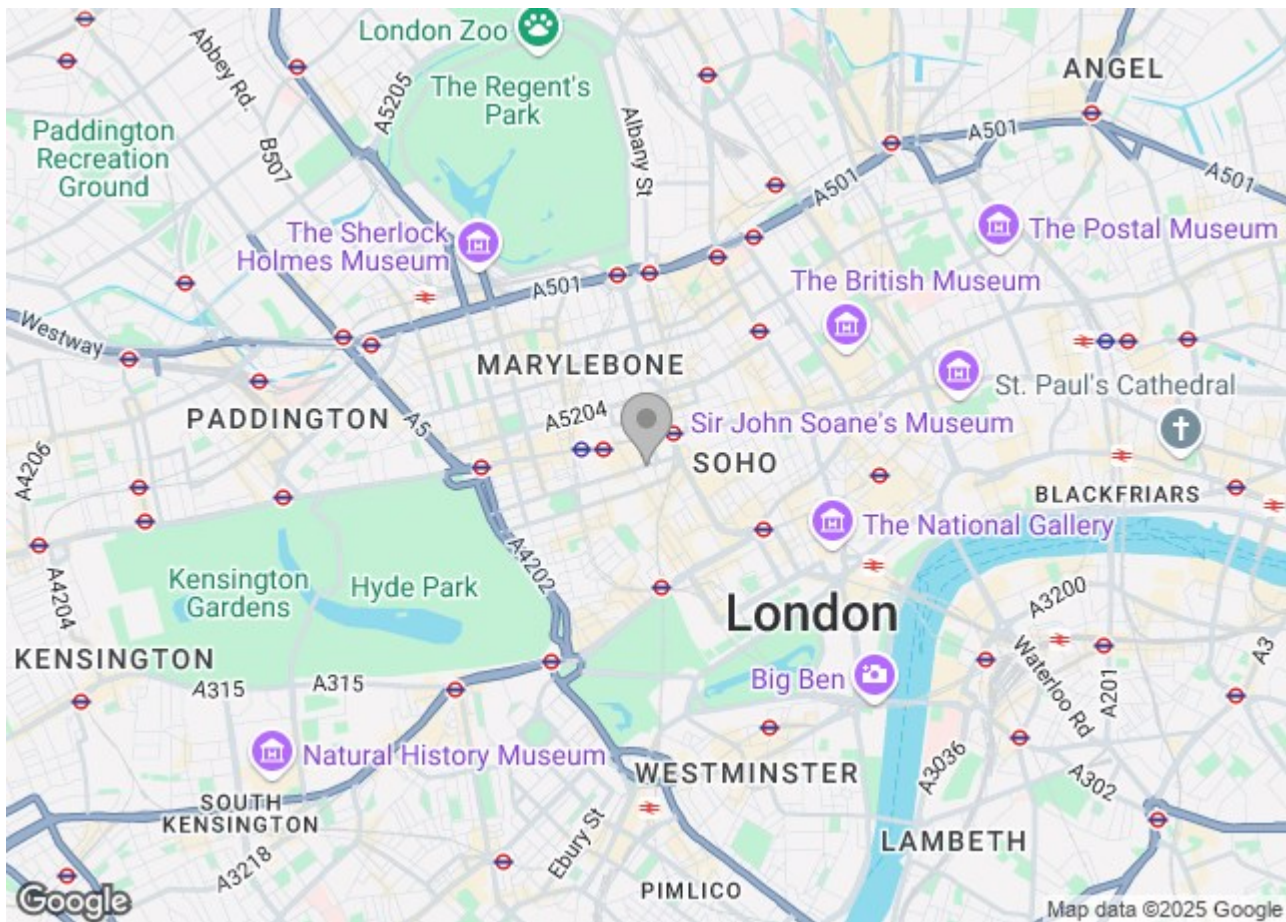
To check broadband and mobile phone coverage please visit Ofcom.

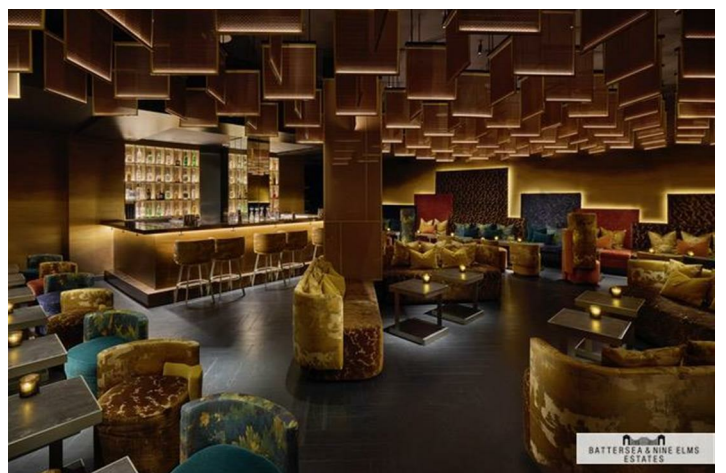
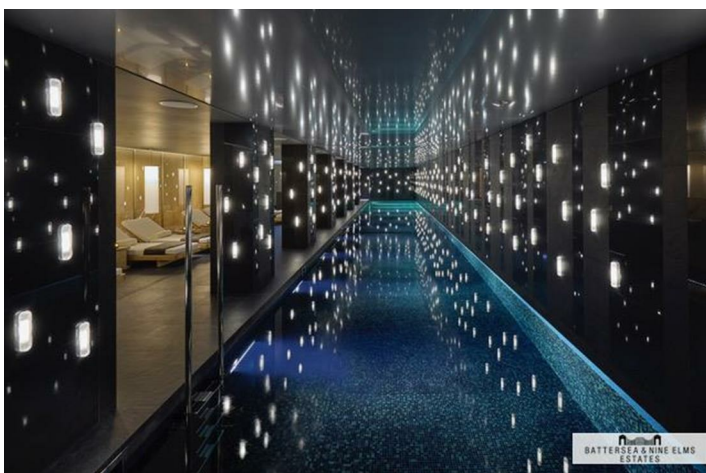
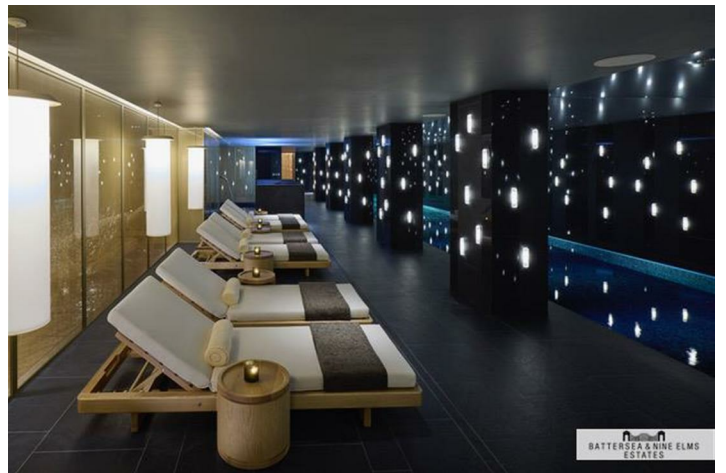
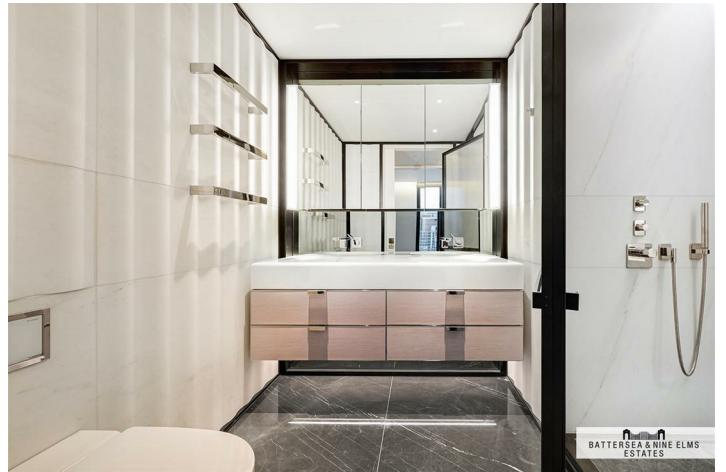
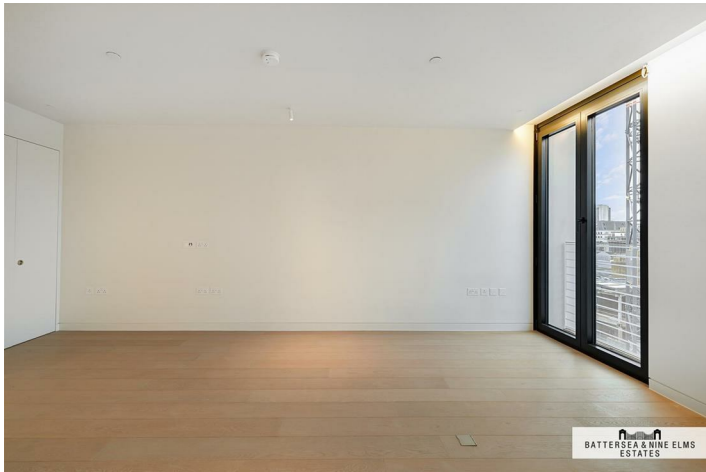
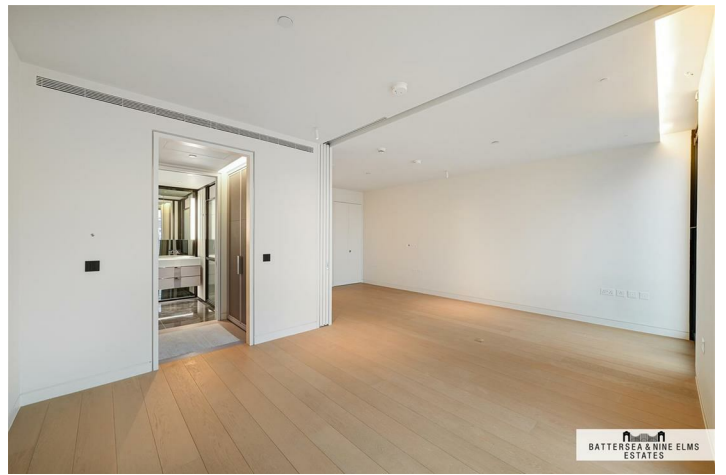
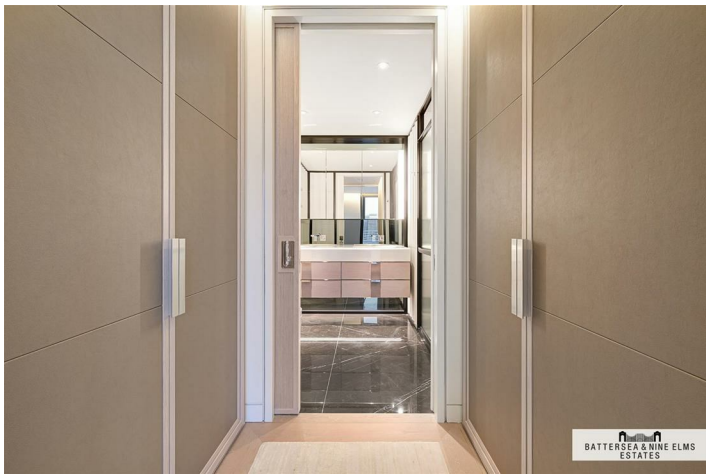
To check planning permission please visit Westminster Council Website, Planning & Building Control

22 Hanover Square London

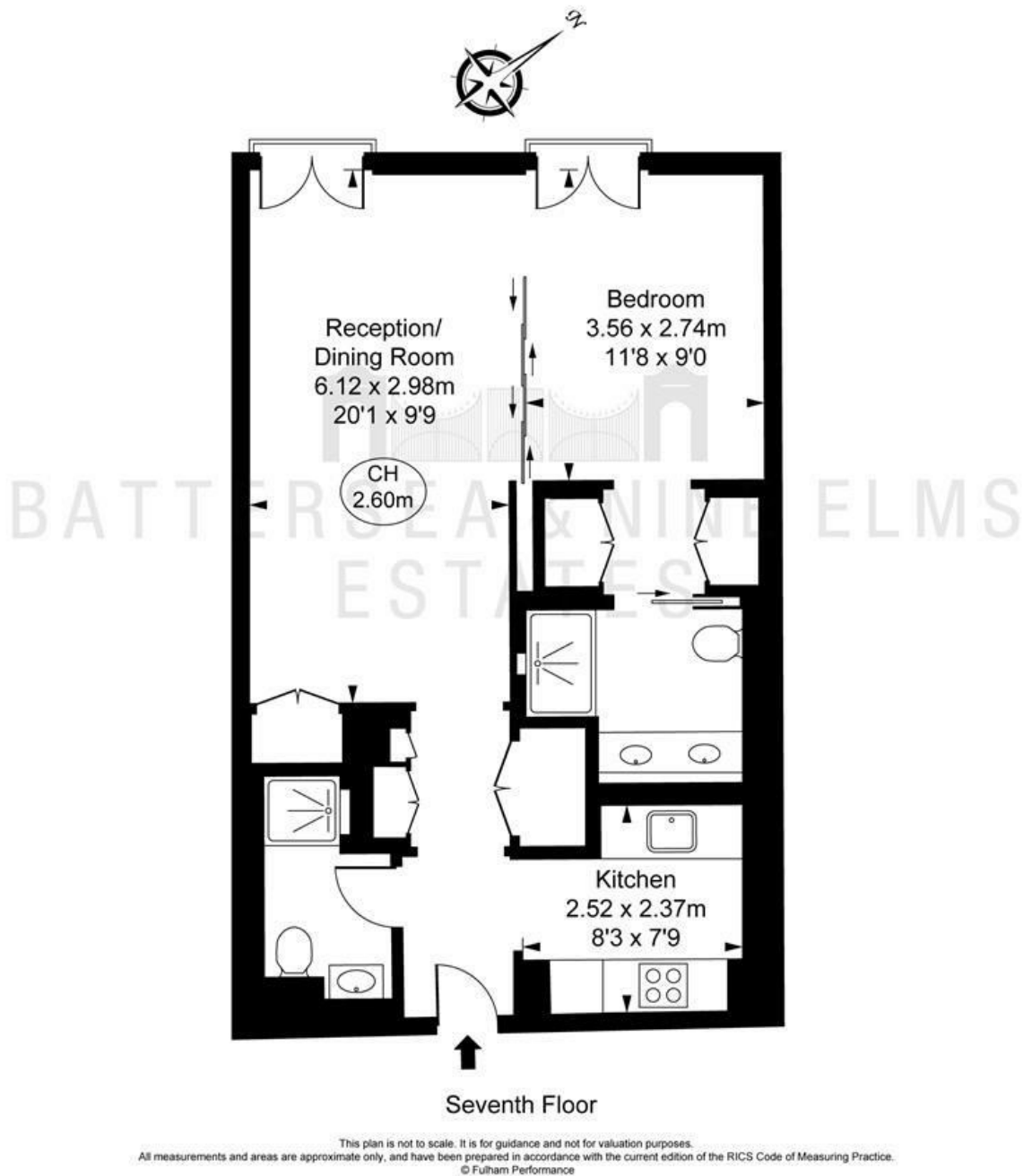


- One bedroom
- Ample storage
- Top-of-the-line integrated appliances
- Luxurious ensuite bathroom
- Open plan reception
- 24-hour concierge
- Access to the hotel's restaurant and signature bar
- Gym & spa
- Iconic development





Hanover Square, W1S
Approximate Gross Internal Area
54.95 sq m / 592 sq ft
(CH = Ceiling Heights)



These particulars, whilst believed to be accurate are set out as a general outline only for guidance and do not constitute any part of an offer or contract. Intending purchasers should not rely on them as statements of representation of fact, but must satisfy themselves by inspection or otherwise as to their accuracy. No person in this firm's employment has the authority to make or give any representation or warranty in respect of the property.

Energy Efficiency Rating				Environmental Impact (CO ₂) Rating			
		Current	Potential			Current	Potential
Very energy efficient - lower running costs				Very environmentally friendly - lower CO ₂ emissions			
(92 plus) A				(92 plus) A			
(81-91) B				(81-91) B			
(69-80) C				(69-80) C			
(55-68) D				(55-68) D			
(39-54) E				(39-54) E			
(21-38) F				(21-38) F			
(1-20) G				(1-20) G			
Not energy efficient - higher running costs				Not environmentally friendly - higher CO ₂ emissions			
England & Wales		EU Directive 2002/91/EC		England & Wales		EU Directive 2002/91/EC	